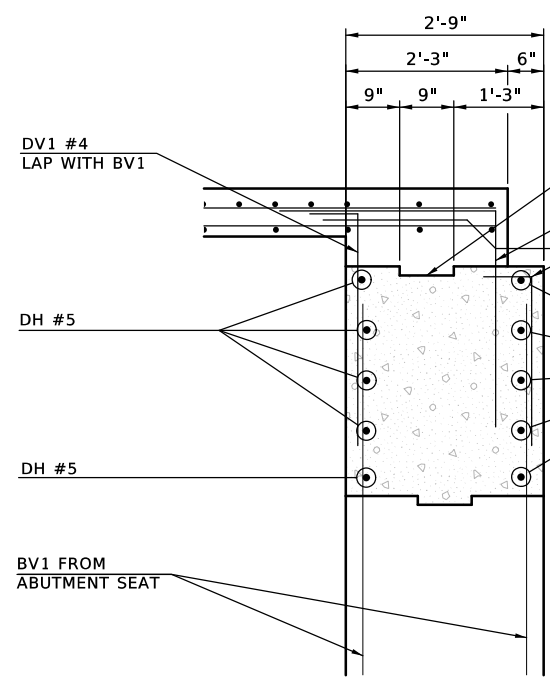
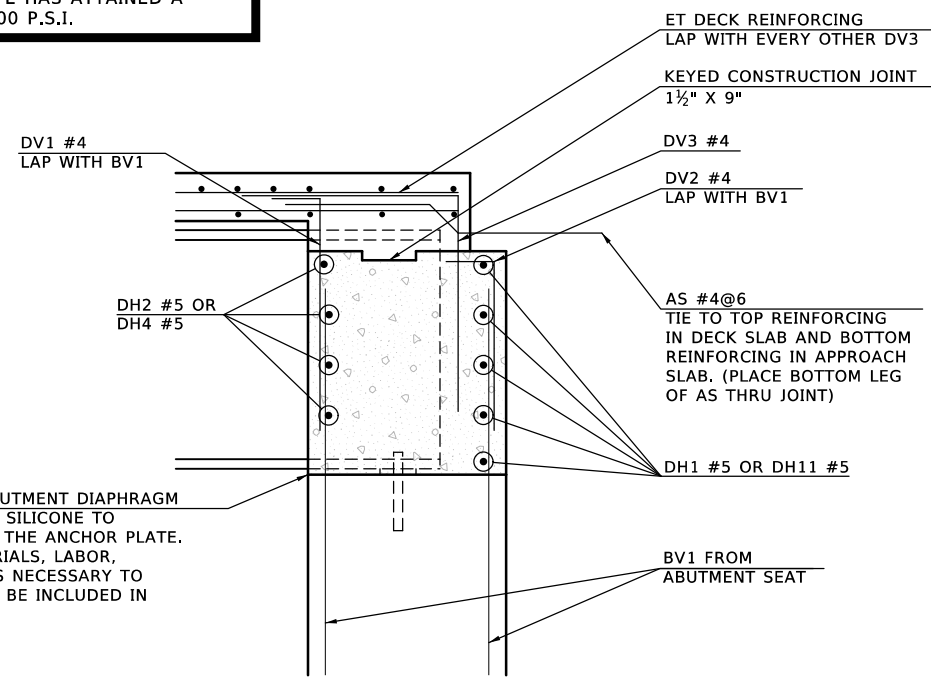


7/31/2017 12:48:39 PM P:\FDE\650-TUL\CIV\309908-ODOT-ECF09-SHO\_20\20\_DESGN\40\_CAD\_SHO\DWG\N\Bridg A\29068(04)\_S\_Abut\_1.2\_Det\_01.dgn

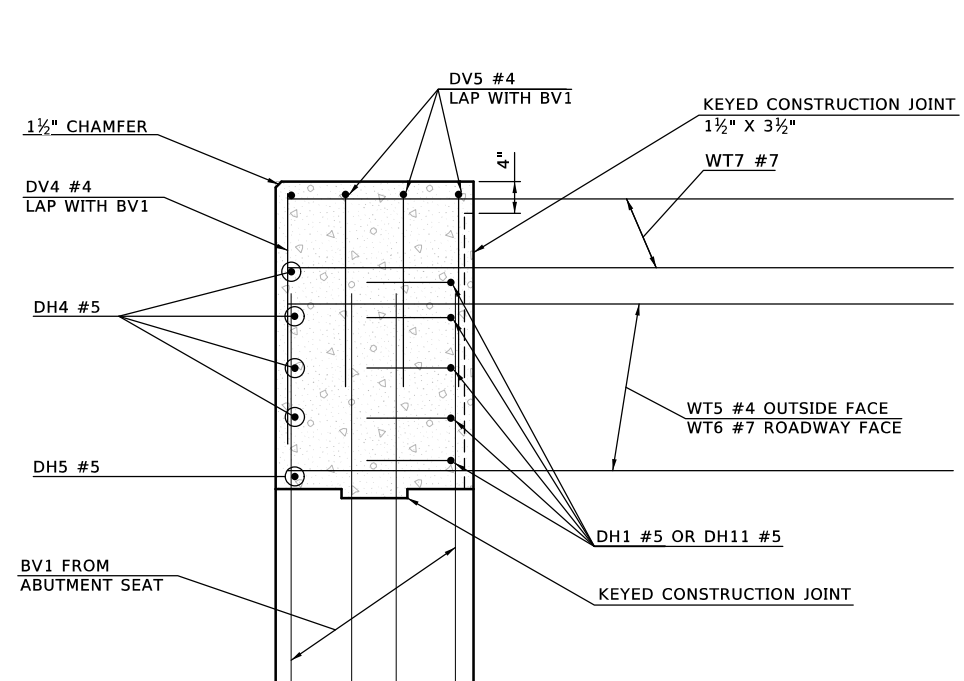
DECK SLAB SHOWN FOR INFORMATIONAL PURPOSES ONLY. DO NOT PLACE DECK SLAB CONCRETE UNTIL THE ABUTMENT DIAPHRAGM CONCRETE HAS ATTAINED A COMPRESSIVE STRENGTH OF 3,000 P.S.I.



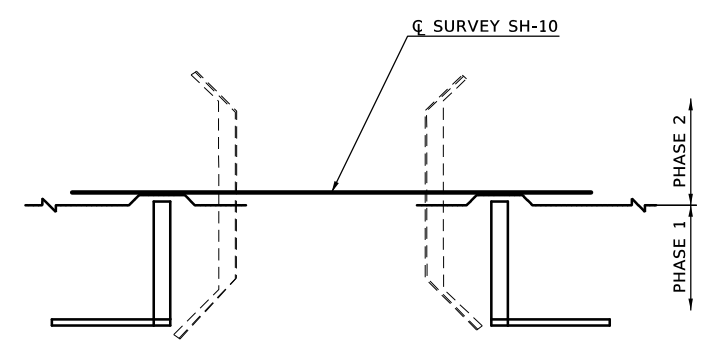
**SECTION A-A**  
SCALE: 3/4" = 1'-0"



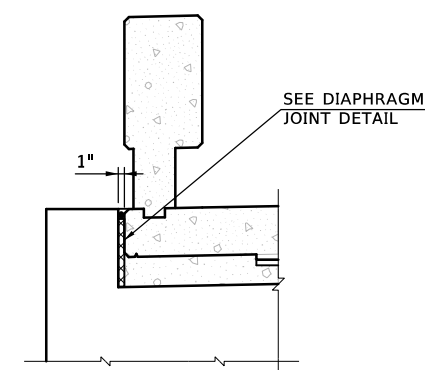
**SECTION B-B**  
SCALE: 3/4" = 1'-0"



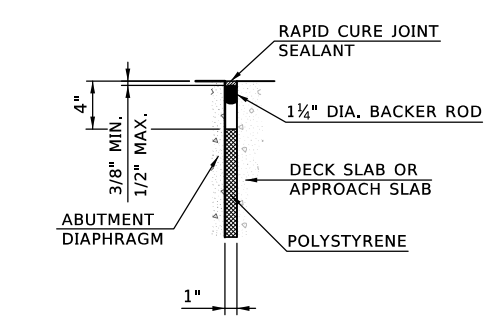
**SECTION C-C**  
SCALE: 3/4" = 1'-0"



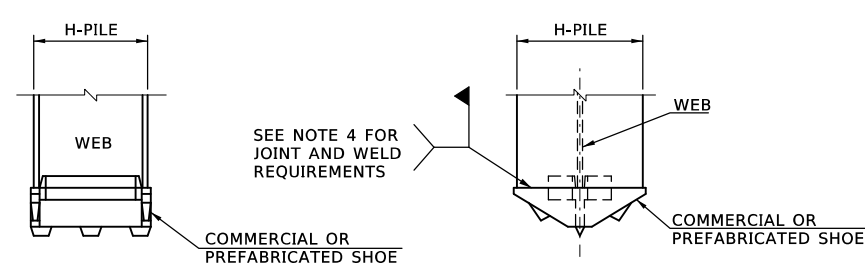
**KEY PLAN FOR ABUTMENT SAWCUT LINE AT SEAT**



**SECTION D-D**  
SCALE: 3/4" = 1'-0"



**DIAPHRAGM JOINT DETAIL**  
SCALE: 1 1/2" = 1'-0"



- NOTES:**
1. COMMERCIAL OR PREFABRICATED SHOES ARE SUBJECT TO THE APPROVAL OF THE ENGINEER.
  2. THE SHOE SHALL BE ATTACHED BY AN ODOT CERTIFIED WELDER.
  3. THE SHOE WELD JOINT DESIGN SHALL BE DONE IN ACCORDANCE WITH THE MANUFACTURER'S RECOMMENDATION, AND AS APPROVED BY THE ENGINEER.
  4. IF SHOES ARE WELDED AT A LOCATION OTHER THAN THE PROJECT SITE, ALL OF THE ABOVE PROVISIONS SHALL APPLY TO THE OFFSITE FABRICATOR. THE ENGINEER SHALL BE NOTIFIED BY THE CONTRACTOR OF THE ACTUAL LOCATION WHERE THE WELDING WILL BE PERFORMED A MINIMUM OF 5 WORKING DAYS BEFORE WORK COMMENCES.
  5. ALL WELDING SHALL BE PERFORMED BY A CERTIFIED WELDER IN CONFORMANCE WITH REQUIREMENTS FOR WELDING AS SPECIFIED IN THE STANDARD SPECIFICATIONS.
  6. INCLUDE ALL COSTS OF MATERIAL, LABOR AND INCIDENTALS ASSOCIATED WITH FABRICATION AND INSTALLATION OF SHOES IN THE PRICE BID FOR EACH OF "METAL PILE SHOES".

**PREFABRICATED METAL PILE SHOE DETAIL**

ABUTMENT QUANTITIES - PHASE 1				
ITEM	UNIT	ABUT. NO. 1	ABUT. NO. 2	TOTAL
SUBSTRUCTURE EXCAVATION COMMON	CY	20	20	40
CLSM BACKFILL	CY	28.5	28.5	57.0
CLASS A CONCRETE	CY	11.8	11.8	23.6
EPOXY COATED REINFORCING STEEL	LB	2380	2380	4760
PILES, FURNISHED (HP10X42)	LF	77	95	172
PILES, DRIVEN (HP10X42)	LF	77	95	172
METAL PILE SHOES	EA	3	3	6
WATER REPELLENT (VISUALLY INSPECTED)	SY	6	6	12
TYPE 1-A PLAIN RIPRAP	TON	310	310	620
TYPE 1-A FILTER BLANKET	TON	50	50	100
6" PERFORATED PIPE UNDERDRAIN ROUND	LF	21	21	42
6" NON-PERF. PIPE UNDERDRAIN RND	LF	20	20	40

ABUTMENT QUANTITIES - PHASE 2				
ITEM	UNIT	ABUT. NO. 1	ABUT. NO. 2	TOTAL
SUBSTRUCTURE EXCAVATION COMMON	CY	25	25	50
CLSM BACKFILL	CY	32.8	32.8	65.6
CLASS A CONCRETE	CY	13.0	13.0	26.0
MECHANICAL SPLICES	EA	22	22	44
EPOXY COATED REINFORCING STEEL	LB	2590	2590	5180
PILES, FURNISHED (HP10X42)	LF	102	126	228
PILES, DRIVEN (HP10X42)	LF	102	126	228
METAL PILE SHOES	EA	4	4	8
WATER REPELLENT (VISUALLY INSPECTED)	SY	6	6	12
TYPE 1-A PLAIN RIPRAP	TON	340	340	680
TYPE 1-A FILTER BLANKET	TON	55	55	110
6" PERFORATED PIPE UNDERDRAIN ROUND	LF	24	24	48

Design	MKR	7/16	SH 10 OVER BIG CABIN CREEK BRIDGE A CRAIG COUNTY
Drawn	RAH	7/16	
Checked	KSJ	7/16	
Approved	SAK	9/16	
Squad	BENHAM		

**ABUTMENT DETAILS (3)**

Job Piece No. 29068(04) Sheet No. 40