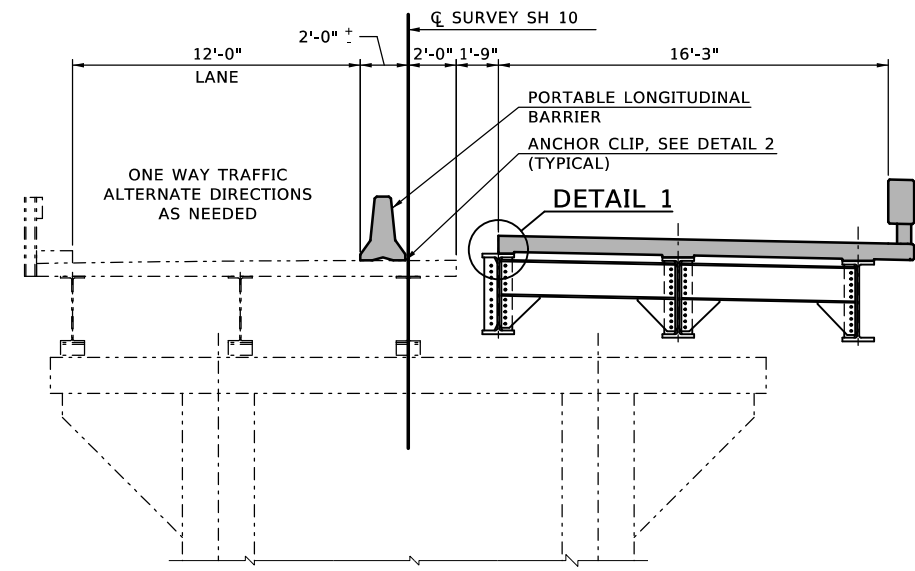
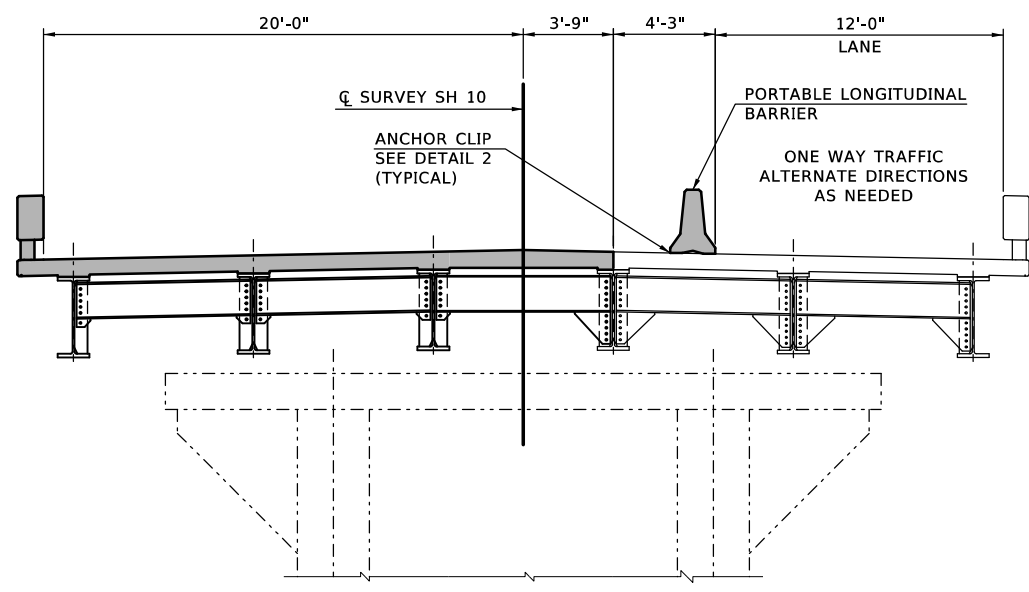


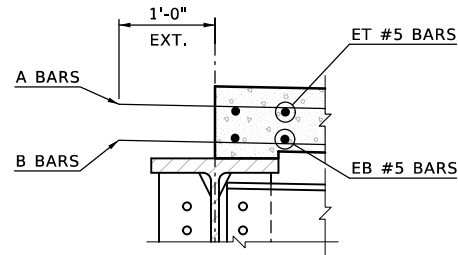
EXISTING ROADWAY AT PIERS
SCALE: 1/4" = 1'-0"



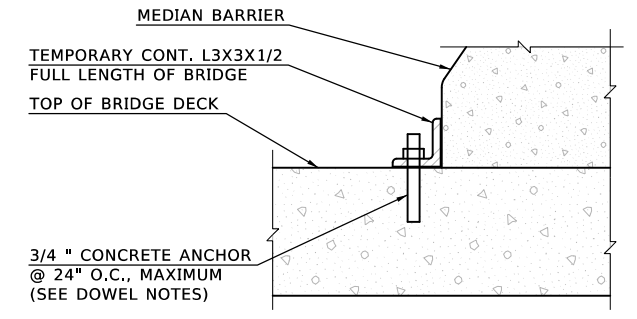
PHASE 1
SCALE: 1/4" = 1'-0"



PHASE 2
SCALE: 1/4" = 1'-0"



DETAIL 1
SCALE: 3/4" = 1'-0"



DETAIL 2

CONSTRUCTION PHASING NOTES

- PHASE 1**
 MOVE ALL TRAFFIC TO WEST BOUND LANE.
 REMOVE EXISTING PORTION OF EAST BOUND DECK, BEAMS, AND PORTION OF ABUTMENTS. DO NOT REMOVE CENTER PILE AT EXISTING ABUTMENTS. DO NOT REMOVE ANY PORTION OF THE PIERS DURING PHASE 1.
 CONSTRUCT NEW EAST BOUND DECK AND STRUCTURE.
- PHASE 2**
 MOVE ALL TRAFFIC TO NEW EAST BOUND BRIDGE.
 REMOVE THE REMAINING EXISTING WEST BOUND DECK, BEAMS AND ABUTMENT.
 CONSTRUCT NEW WEST BOUND DECK AND STRUCTURE.
 REMOVE EXISTING PIER STRUCTURES.

DOWEL NOTES
 THE CONTRACTOR SHALL SUBMIT THE TYPE OF CONCRETE ANCHOR TO THE ENGINEER FOR APPROVAL PRIOR TO INSTALLATION OF ANCHORS, ANCHORS SHALL HAVE A MINIMUM ULTIMATE PULLOUT CAPACITY OF 10 kip AND A MINIMUM ULTIMATE SHEAR CAPACITY OF 13 kip. WHEN ANGLE IS REMOVED, ALL HOLES WILL BE FILLED IN A MANNER APPROVED BY THE ENGINEER. ALL COSTS OF ANGLES AND 3/4" DIA. CONCRETE ANCHORS (WITH WASHERS) SHALL BE PAID FOR UNDER OTHER ITEMS OF WORK.

LEGEND

NEW CONSTRUCTION

Design	KSJ	7/16	SH 10 OVER BIG CABIN CREEK BRIDGE A CONSTRUCTION PHASING Job Piece No. 29068(04) Sheet No. 36	CRAIG COUNTY
Drawn	WZB	7/16		
Checked	KSJ	7/16		
Approved	SAK	9/16		
Squad	BENHAM			