

C-18-474 North Quarter Corner of Section 34, Township 28 North, Range 20 East, found MAG Nail. Point corresponds with CCR filed by William McKinley Thomas, III, PLS No. 1342 on April 6, 2006, acknowledged corner and filed new CCR.

C-18-475 Northeast Corner of Section 34, Township 28 North, Range 20 East, found 3/8" Iron Pin, no existing CCR. Point corresponds with existing lines of possession. Accepted corner and filed new CCR.

C-18-473 Northwest Corner of Section 34, Township 28 North, Range 20 East, found MAG Nail. Point corresponds with CCR filed by William McKinley Thomas, III, PLS No. 1342 on April 6, 2006, acknowledged corner and filed new CCR.

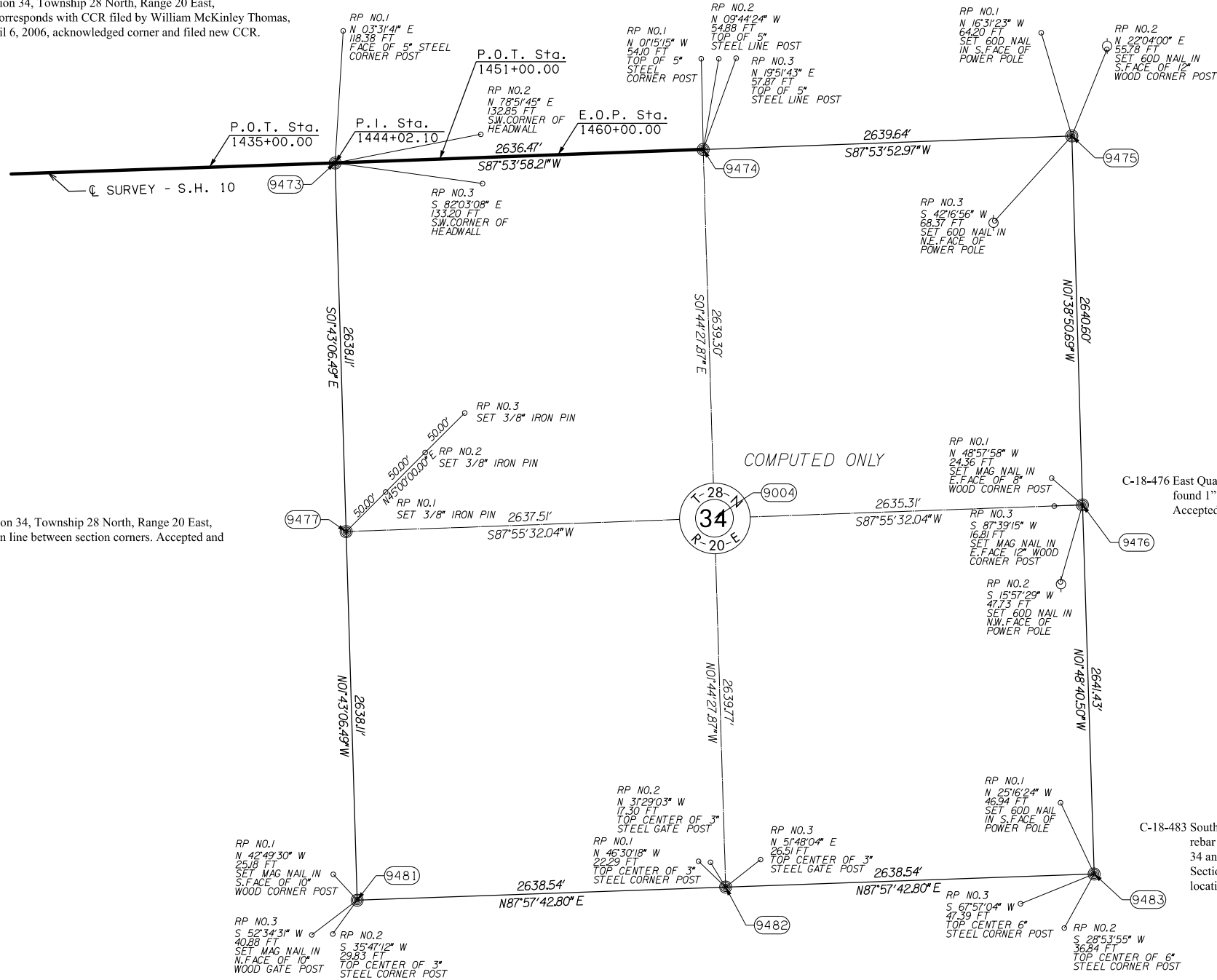
C-18-477 West Quarter Corner of Section 34, Township 28 North, Range 20 East, set rebar w/ cap at split and on line between section corners. Accepted and filed new CCR.

C-18-476 East Quarter Corner of Section 34, Township 28 North, Range 20 East, found 1" square rod, point corresponds with existing lines of possession. Accepted corner and filed new CCR.

C-18-483 Southeast Corner of Section 34, Township 28 North, Range 20 East, set rebar w/ cap at proportionate distance between South Quarter corner of Section 34 and the Southwest corner of Section 33 as well as the East Quarter corner of Section 34. Location corresponds with existing lines of possession. Accepted location and filed new CCR.

C-18-481 Southwest Quarter Corner of Section 34, Township 28 North, Range 20 East, set rebar w/ cap at proportionate distance on line and between Southwest corner of Section 33 and South Quarter corner of Section 34. Location corresponds with existing lines of possession. Accepted location and filed new CCR.

C-18-482 South Quarter Corner of Section 34, Township 28 North, Range 20 East, found 1" steel anchor bolt. No references. Accepted corner and filed new CCR.



SCALE:
1" = 500'

NOTE: REFERENCE'S SHOWN ARE NOT TO SCALE.

PLS	KAI		OKLAHOMA DEPARTMENT OF TRANSPORTATION SURVEY DIVISION SURVEY DATA SHEET (11) SWO <u>5076</u> (1) PROJECT NO. <u>29068(04)</u> SHEET NO. <u>31</u>
DRAWN	JDI		
CHECKED	KAI		
APPROVED	KAI		
CREW	ISAACS		