

C-18-471 Northwest Corner of Section 33, Township 28 North, Range 20 East, Found 1/2" Iron Pin, 4" below surface. No existing references. Point corresponds with existing lines of possession. Acknowledged corner and filed new CCR.

C-18-472 North Quarter Corner of Section 33, Township 28 North, Range 20 East, set rebar w/ cap at split and on line between section corners. Accepted and filed new CCR.

C-18-473 Northeast Corner of Section 33, Township 28 North, Range 20 East, found MAG Nail. Point corresponds with CCR filed by William McKinley Thomas, III, PLS No. 1342 on April 6, 2006, acknowledged corner and filed new CCR.

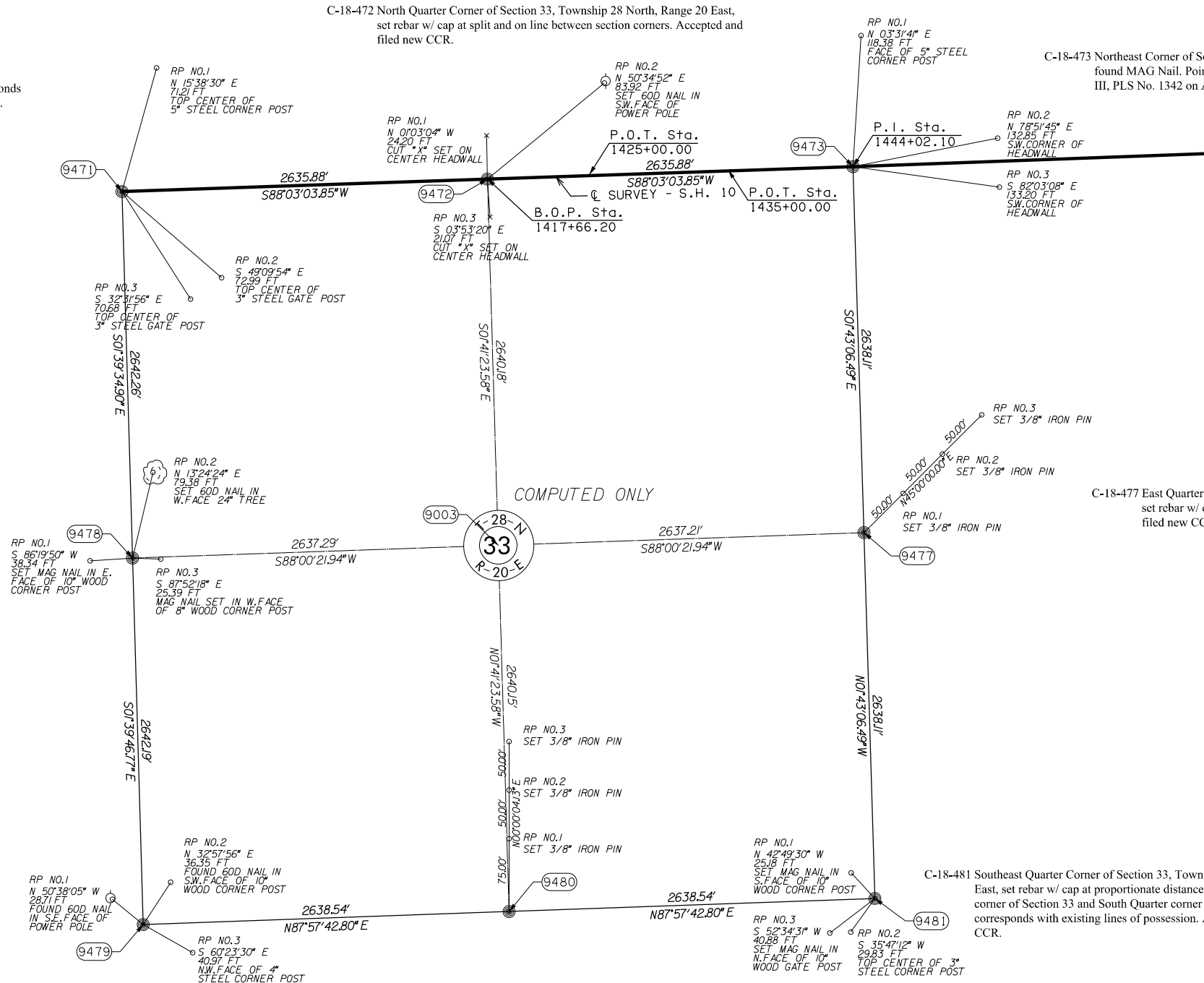
C-18-478 West Quarter Corner of Section 33, Township 28 North, Range 20 East, found 3/8" iron pin. Point corresponds with CCR filed by William McKinley Thomas, III, PLS No. 1342 on January 30, 2003, acknowledged corner and filed new CCR.

C-18-477 East Quarter Corner of Section 33, Township 28 North, Range 20 East, set rebar w/ cap at split and on line between section corners. Accepted and filed new CCR.

C-18-479 Southwest Corner of Section 33, Township 28 North, Range 20 East, found 40d nail. Point corresponds with CCR filed by George Michael Finnell, LS 1107 on December 03, 2002. Point corresponds with existing lines of possession. Replaced 40d nail with 3/8" rebar w/ cap. Acknowledged corner and filed new CCR.

C-18-480 South Quarter Corner of Section 33, Township 28 North, Range 20 East, set rebar w/ cap at split and on line between section corners. Accepted and filed new CCR.

C-18-481 Southeast Quarter Corner of Section 33, Township 28 North, Range 20 East, set rebar w/ cap at proportionate distance on line and between Southwest corner of Section 33 and South Quarter corner of Section 34. Location corresponds with existing lines of possession. Accepted location and filed new CCR.



SCALE:  
1" = 500'

NOTE: REFERENCE'S SHOWN ARE NOT TO SCALE.

PLS	KAI		<b>OKLAHOMA DEPARTMENT OF TRANSPORTATION</b> <b>SURVEY DIVISION</b>  <b>SURVEY DATA SHEET (10)</b>  SWO 5076 (1) PROJECT NO. 29068(04) SHEET NO. 30
DRAWN	JDI		
CHECKED	KAI		
APPROVED	KAI		
CREW	ISAACS		