

C-18-466 North Quarter Corner of Section 27, Township 28 North, Range 20 East, set rebar w/ cap at split and on line between section corners. Point corresponds with existing lines of possession. Accepted and filed new CCR.

C-18-465 Northwest Corner of Section 27, Township 28 North, Range 20 East, found 5/8" Iron Pin with illegible plastic cap, corresponds with local lines of possession. No existing CCR filed. Acknowledged corner and filed new CCR.

C-18-467 Northeast Corner of Section 27, Township 28 North, Range 20 East, calculated corner using proportionate measurements from Southeast corner of Section 27 and Northeast corner of Section 26, adjusted location in favor of lines of possession. Set rebar with cap and filed new CCR.

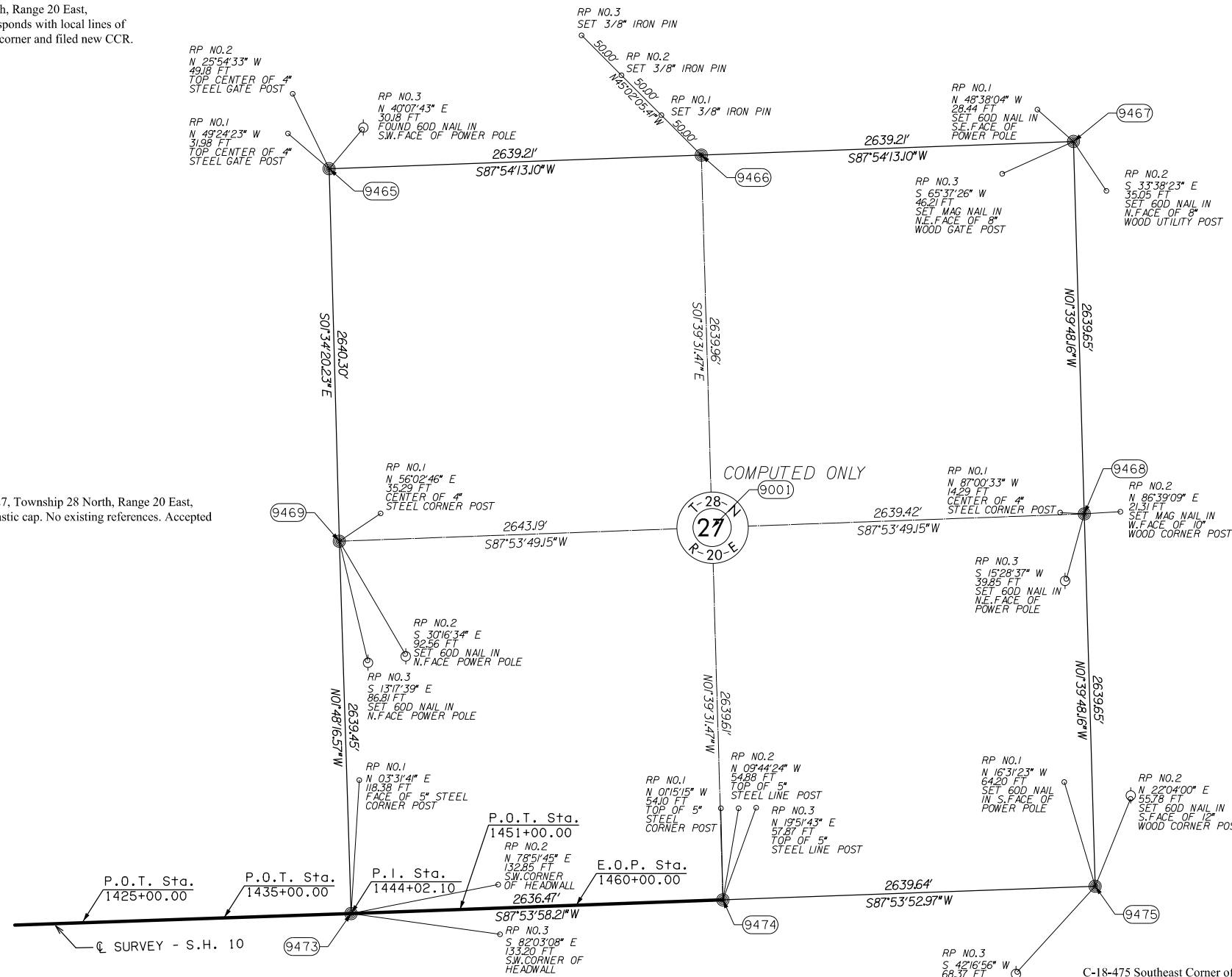
C-18-469 West Quarter Corner of Section 27, Township 28 North, Range 20 East, found 1/2" Iron Pin w/ illegible plastic cap. No existing references. Accepted corner and filed new CCR.

C-18-468 East Quarter Corner of Section 27, Township 28 North, Range 20 East, set rebar w/ cap at split and on line between section corners. Accepted and filed new CCR.

C-18-473 Southwest Corner of Section 27, Township 28 North, Range 20 East, found MAG Nail. Point corresponds with CCR filed by William McKinley Thomas, III, PLS No. 1342 on April 6, 2006, acknowledged corner and filed new CCR.

C-18-474 South Quarter Corner of Section 27, Township 28 North, Range 20 East, found MAG Nail. Point corresponds with CCR filed by William McKinley Thomas, III, PLS No. 1342 on April 6, 2006, acknowledged corner and filed new CCR.

C-18-475 Southeast Corner of Section 27, Township 28 North, Range 20 East, found 3/8" Iron Pin, no existing CCR. Point corresponds with existing lines of possession. Accepted corner and filed new CCR.



SCALE:
1" = 500'

NOTE: REFERENCE'S SHOWN ARE NOT TO SCALE.

| | | | |
|----------|--------|--|--|
| PLS | KAI | | OKLAHOMA DEPARTMENT OF TRANSPORTATION SURVEY DIVISION SURVEY DATA SHEET (9) SWO <u>5076</u> (1) PROJECT NO. <u>29068(04)</u> SHEET NO. <u>29</u> |
| DRAWN | JDI | | |
| CHECKED | KAI | | |
| APPROVED | KAI | | |
| CREW | ISAACS | | |