

C-18-464 North Quarter Corner of Section 28, Township 28 North, Range 20 East, set rebar w/ cap at split and on line between section corners. Point corresponds with existing lines of possession. Accepted and filed new CCR.

C-18-463 Northwest Corner of Section 28, Township 28 North, Range 20 East, established corner from proportionate measurements, incorporating the Northwest Corner of Section 21 and the Southwest Corner of Section 28 as well as the Northeast Corner of Section 28. Point corresponds with local lines of possession. Set rebar with cap, accepted and filed new CCR.

C-18-465 Northeast Corner of Section 28, Township 28 North, Range 20 East, found 5/8" Iron Pin with illegible plastic cap, corresponds with local lines of possession. No existing CCR filed. Acknowledged corner and filed new CCR.

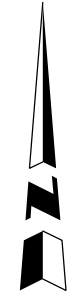
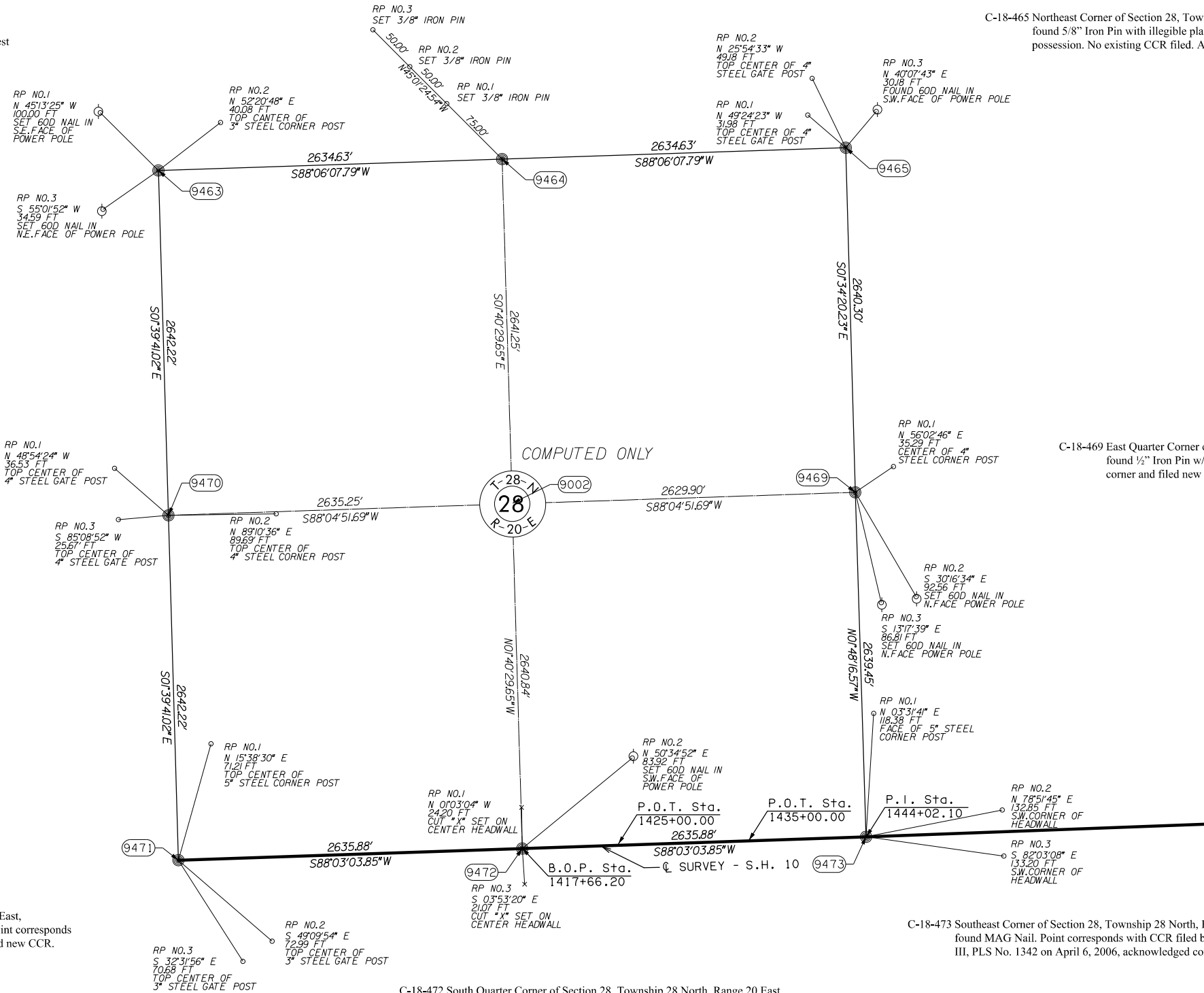
C-18-470 West Quarter Corner of Section 28, Township 28 North, Range 20 East, set rebar w/ cap at split and on line between section corners. Point corresponds with existing lines of possession. Accepted and filed new CCR.

C-18-469 East Quarter Corner of Section 28, Township 28 North, Range 20 East, found 1/2" Iron Pin w/ illegible plastic cap. No existing references. Accepted corner and filed new CCR.

C-18-471 Southwest Corner of Section 28, Township 28 North, Range 20 East, Found 1/2" Iron Pin, 4" below surface. No existing references. Point corresponds with existing lines of possession. Acknowledged corner and filed new CCR.

C-18-472 South Quarter Corner of Section 28, Township 28 North, Range 20 East, set rebar w/ cap at split and on line between section corners. Accepted and filed new CCR.

C-18-473 Southeast Corner of Section 28, Township 28 North, Range 20 East, found MAG Nail. Point corresponds with CCR filed by William McKinley Thomas, III, PLS No. 1342 on April 6, 2006, acknowledged corner and filed new CCR.



SCALE: 1" = 500'

NOTE: REFERENCE'S SHOWN ARE NOT TO SCALE.

PLS	KAI		OKLAHOMA DEPARTMENT OF TRANSPORTATION SURVEY DIVISION SURVEY DATA SHEET (8) SWO 5076 (1) PROJECT NO. 29068(04) SHEET NO. 28
DRAWN	JDI		
CHECKED	KAI		
APPROVED	KAI		
CREW	ISAACS		