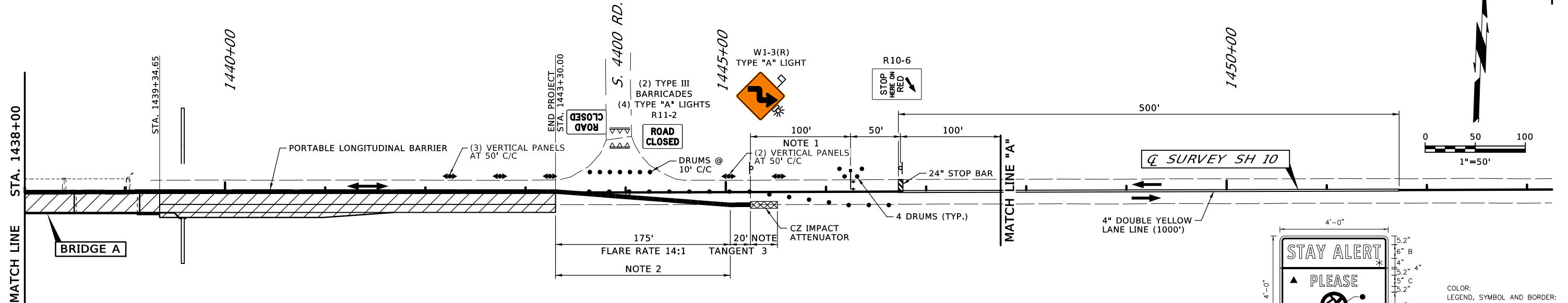


PHASE 1		
ITEM	CONSTRUCTION	TRAFFIC
SH 10	Sta. 1433+40.00 to Sta. 1436+64.15: eastbound lane and shoulder	One-way traffic on existing SH 10 westbound lane
Bridge A	Sta. 1439+34.65 to Sta. 1443+30.00: eastbound lane and shoulder Construct south portion	



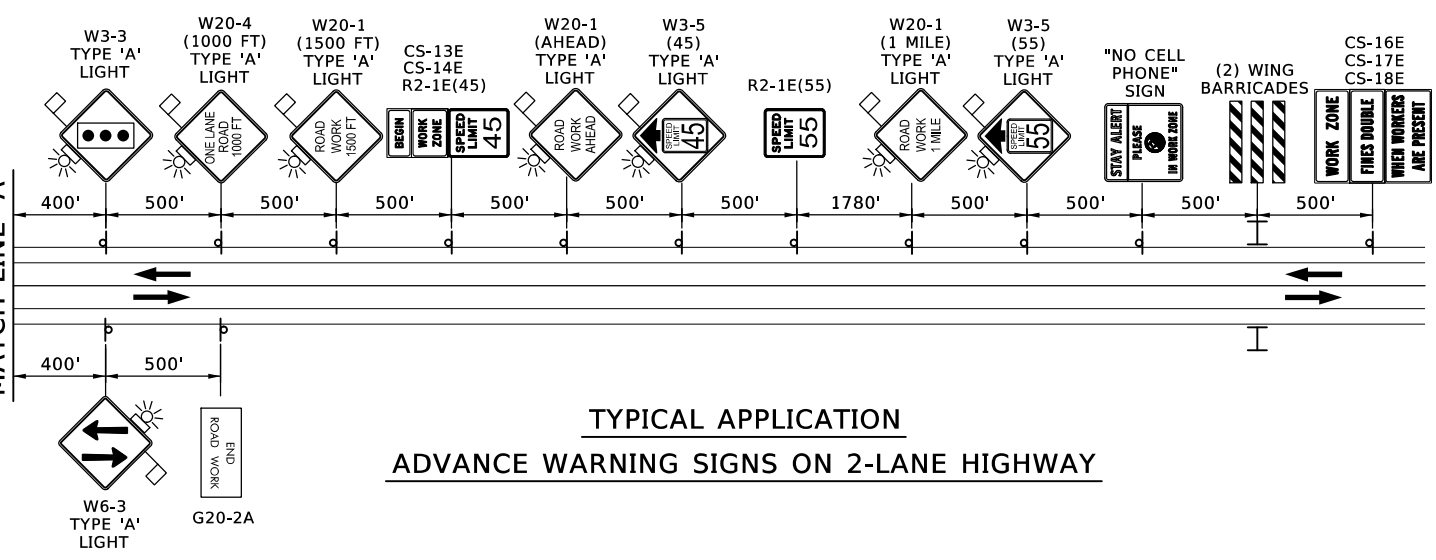
- NOTES:
- A MINIMUM OF FIVE (5) CHANNELIZING DEVICE SHALL BE PLACED THROUGH THIS TAPER.
  - MAXIMUM SPACING BETWEEN CHANNELIZING DEVICES (FEET) SHALL BE EQUAL TO THE POSTED SPEED LIMIT (M.P.H.) WITH THE FOLLOWING EXCEPTIONS. SPACING SHALL NOT EXCEED 25 FEET FOR CONES OR TUBE CHANNELIZERS. SPACING SHALL NOT EXCEED 50 FEET FOR TYPE II BARRICADES, VERTICAL PANNELS OR DRUMS.
  - IF CLEAR ZONE CAN BE MET BY FLARING MEDIAN BARRIER, THE CONSTRUCTION ZONE IMPACT ATTENUATORS MAY BE OMITTED. SEE FLARE RATE TABLE ON TCS2-1 (LATEST EDITION).
  - SEE SHEET 36, "CONSTRUCTION PHASING" FOR DETAILED PORTABLE LONGITUDINAL BARRIER AND DRIVING LANE PLACEMENT.

SIGNAL NOTES:

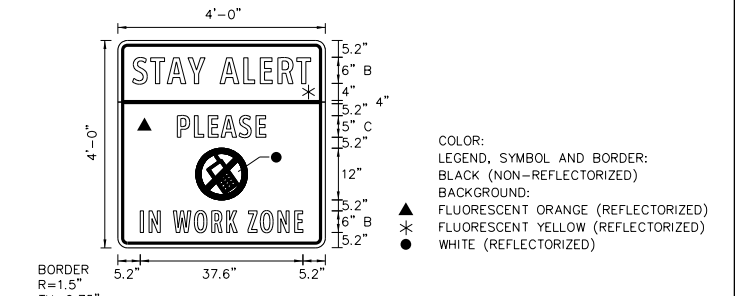
PORTABLE TRAFFIC SIGNALS SHALL BE INSTALLED AND OPERATED IN ACCORDANCE WITH PART IV OF MANUAL ON UNIFORM TRAFFIC CONTROL DEVICES. TEMPORARY TRAFFIC CONTROL SIGNALS SHALL MEET THE PHYSICAL DISPLAY AND OPERATION REQUIREMENTS OF CONVENTIONAL TRAFFIC SIGNALS.

THE INSTALLATION AND ACTUATION OF SIGNALS SHALL BE APPROVED BY THE DIVISION TRAFFIC ENGINEER PRIOR TO SIGNALS BEING PLACED IN OPERATION.

ALL CONFLICTING PAVEMENT MARKINGS AND RAISED PAVEMENT MARKER REFLECTORS BETWEEN THE ACTIVITY AREA AND THE STOP LINE SHALL BE REMOVED. AFTER COMPLETION OF THE WORK, THE STOP LINES AND OTHER TEMPORARY INAPPLICABLE PAVEMENT MARKINGS SHALL BE REMOVED.



TYPICAL APPLICATION  
ADVANCE WARNING SIGNS ON 2-LANE HIGHWAY



"NO CELL PHONE" SIGN

LEGEND

	CONSTRUCTION		SIGN
	COMPLETED CONSTRUCTION		DRUMS
	C.Z. IMPACT ATTENUATOR		WING BARRICADE
	PORTABLE TRAFFIC SIGNAL		TRAFFIC FLOW DIRECTION
	VERTICAL PANELS		PORTABLE LONGITUDINAL BARRIER

Design		SH 10 OVER BIG CABIN CREEK	CRAIG COUNTY
Drawn		<b>SUGGESTED CONSTRUCTION SEQUENCE/TRAFFIC CONTROL (1)</b>	
Checked			
Approved			
Squad			
		State Job No. 29068(04)	Sheet No. 17