

SCP 7 - 3/8" X 18" IRON PIN WITH PLASTIC CAP STAMPED "ISAACS CONTROL" STA 1436+72.44 - 18.92' LT @ SH 10 ELEV=781.305

BM 201 - RR SPIKE SET IN NORTH FACE OF 18" TREE STA 1436+92.88 - 139.27' RT @ SH 10 ELEV=771.268

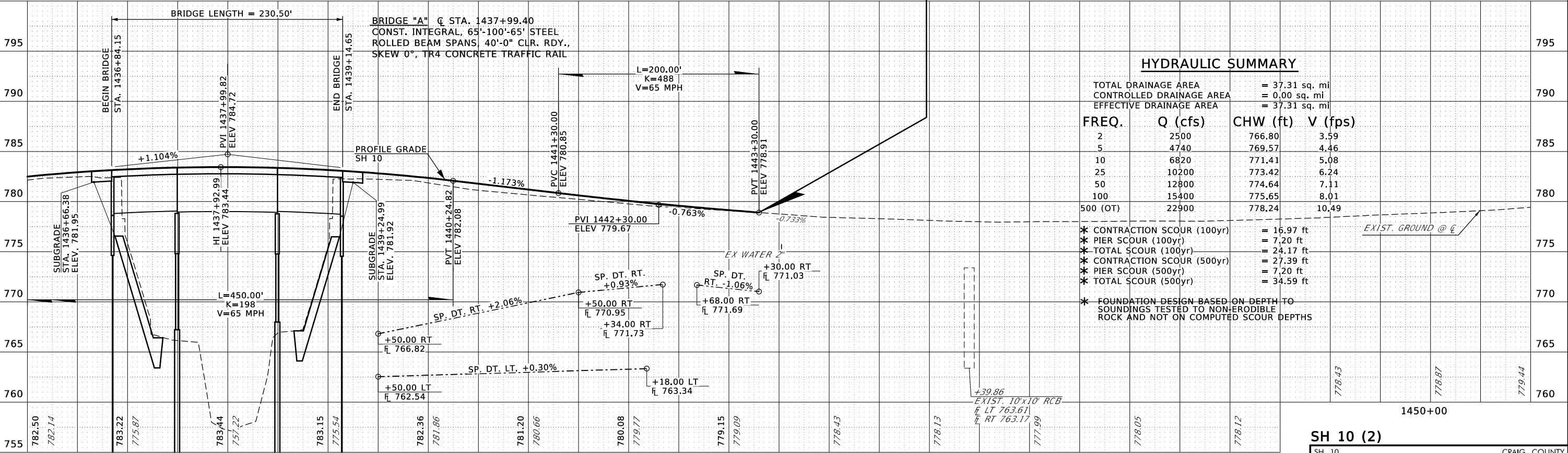
SCP 8 - 3/8" X 18" IRON PIN WITH PLASTIC CAP STAMPED "ISAACS CONTROL" STA 1439+23.84 - 20.78' RT @ SH 10 ELEV=782.113

SCP 9 - 3/8" X 18" IRON PIN WITH PLASTIC CAP STAMPED "ISAACS CONTROL" STA 1443+49.99 - 23.61' LT @ SH 10 ELEV=777.331

SCP 10 - 3/8" X 18" IRON PIN WITH PLASTIC CAP STAMPED "ISAACS CONTROL" STA 1447+45.41 - 19.96' RT @ SH 10 ELEV=776.626

BM 202 - 3/4" X 36" IRON PIN W/ 2 IN. ALUM. CAP STAMPED "ISAACS SURVEYING BM 202 SURVEY CONTROL" STA 1448+33.16 - 209.64' RT @ SH 10 ELEV=773.294

SCP 11 - 3/8" X 18" IRON PIN WITH PLASTIC CAP STAMPED "ISAACS CONTROL" STA 1450+76.39 - 13.90' LT @ SH 10 ELEV=778.653



HYDRAULIC SUMMARY

TOTAL DRAINAGE AREA	= 37.31 sq. mi		
CONTROLLED DRAINAGE AREA	= 0.00 sq. mi		
EFFECTIVE DRAINAGE AREA	= 37.31 sq. mi		
FREQ.	Q (cfs)	CHW (ft)	V (fps)
2	2500	766.80	3.59
5	4740	769.57	4.46
10	6820	771.41	5.08
25	10200	773.42	6.24
50	12800	774.64	7.11
100	15400	775.65	8.01
500 (OT)	22900	778.24	10.49
* CONTRACTION SCOUR (100yr)		= 16.97 ft	
* PIER SCOUR (100yr)		= 7.20 ft	
* TOTAL SCOUR (100yr)		= 24.17 ft	
* CONTRACTION SCOUR (500yr)		= 27.39 ft	
* PIER SCOUR (500yr)		= 7.20 ft	
* TOTAL SCOUR (500yr)		= 34.59 ft	
* FOUNDATION DESIGN BASED ON DEPTH TO SOUNDINGS TESTED TO NON-ERODIBLE ROCK AND NOT ON COMPUTED SCOUR DEPTHS			