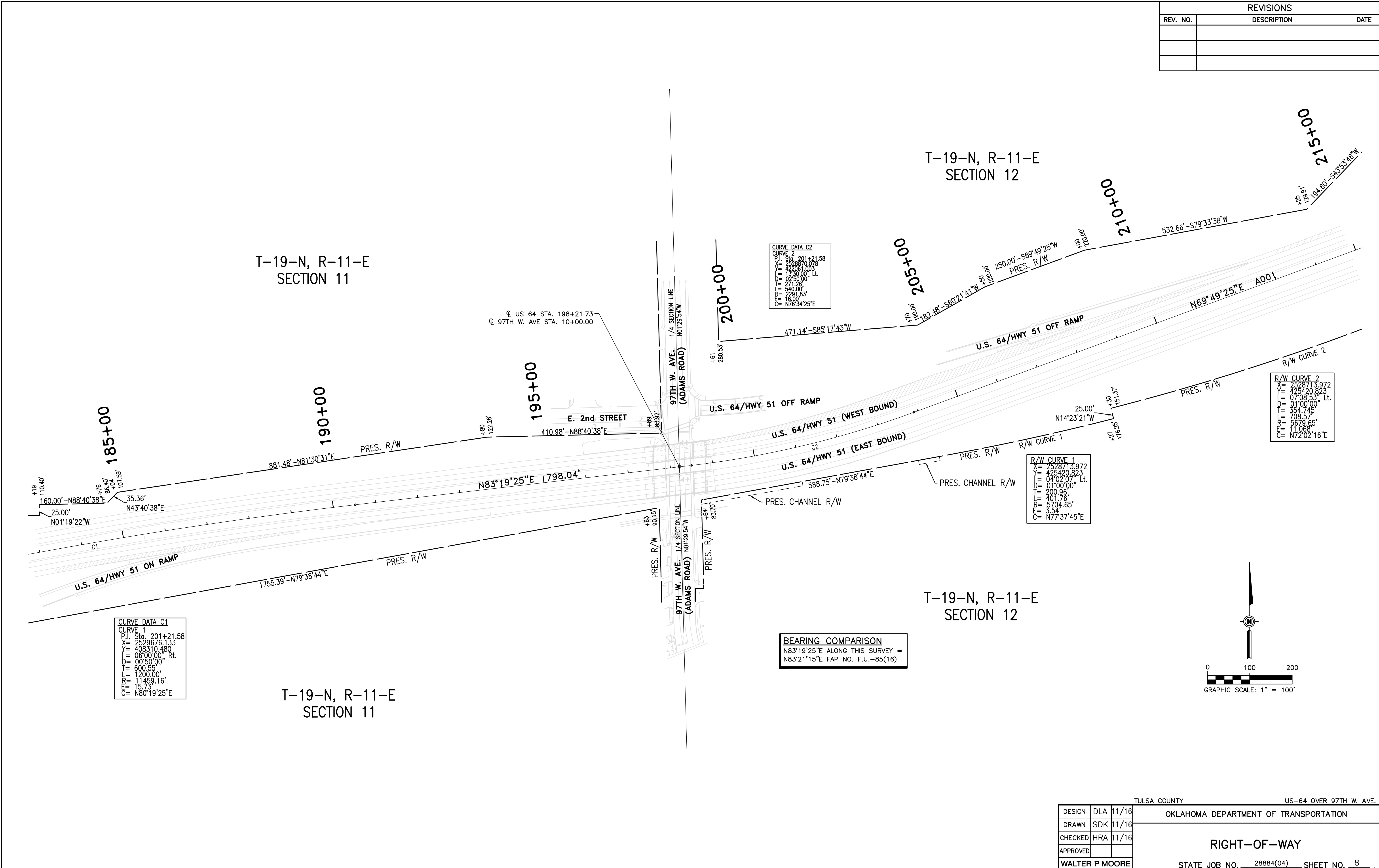


REVISIONS		
REV. NO.	DESCRIPTION	DATE



CURVE DATA C1

CURVE 1
P.I. Sta. 201+21.58
X = 2529676.133
Y = 408310.480
D = 06°00'00" Rt.
L = 00°50'00"
T = 600.55'
R = 1200.00'
E = 11459.16'
C = N80°19'25"E

CURVE DATA C2

CURVE 2
P.I. Sta. 201+21.58
X = 2529670.078
Y = 422081.035
D = 15°30'00" Lt.
L = 02°50'00"
T = 271.28'
R = 540.00'
E = 2281.83'
C = N76°34'28"E

R/W CURVE 2

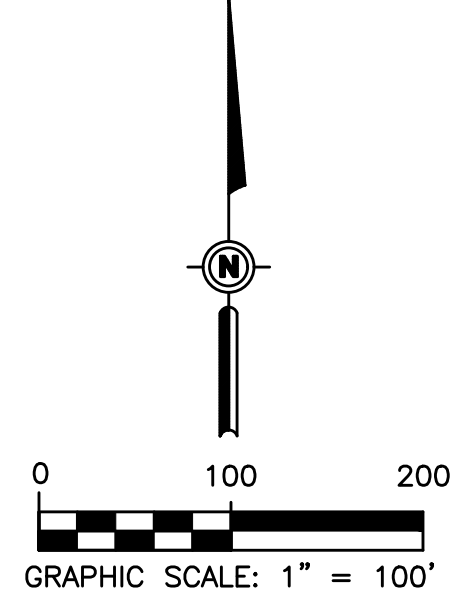
X = 2528713.972
Y = 425420.823
D = 07°08'53" Lt.
L = 01°00'00"
T = 354.745'
R = 708.57'
E = 5679.65'
C = N72°02'16"E

R/W CURVE 1

X = 2528713.972
Y = 425420.823
D = 04°02'07" Lt.
L = 01°00'00"
T = 200.96'
R = 401.78'
E = 5704.65'
C = N77°37'45"E

BEARING COMPARISON

N83°19'25"E ALONG THIS SURVEY =
N83°21'15"E FAP NO. F.U.-85(16)



DESIGN	DLA	11/16	TULSA COUNTY OKLAHOMA DEPARTMENT OF TRANSPORTATION RIGHT-OF-WAY STATE JOB NO. 28884(04) SHEET NO. 8
DRAWN	SDK	11/16	
CHECKED	HRA	11/16	
APPROVED			
WALTER P MOORE			

V:\M12\2012\2005-07 0001 EC-1414 US-64 Task 3\CD\CD\308\308.dwg 11/12/2015 10:00:00 AM 12/15/2015 10:00:00 AM 12/15/2015 10:00:00 AM