








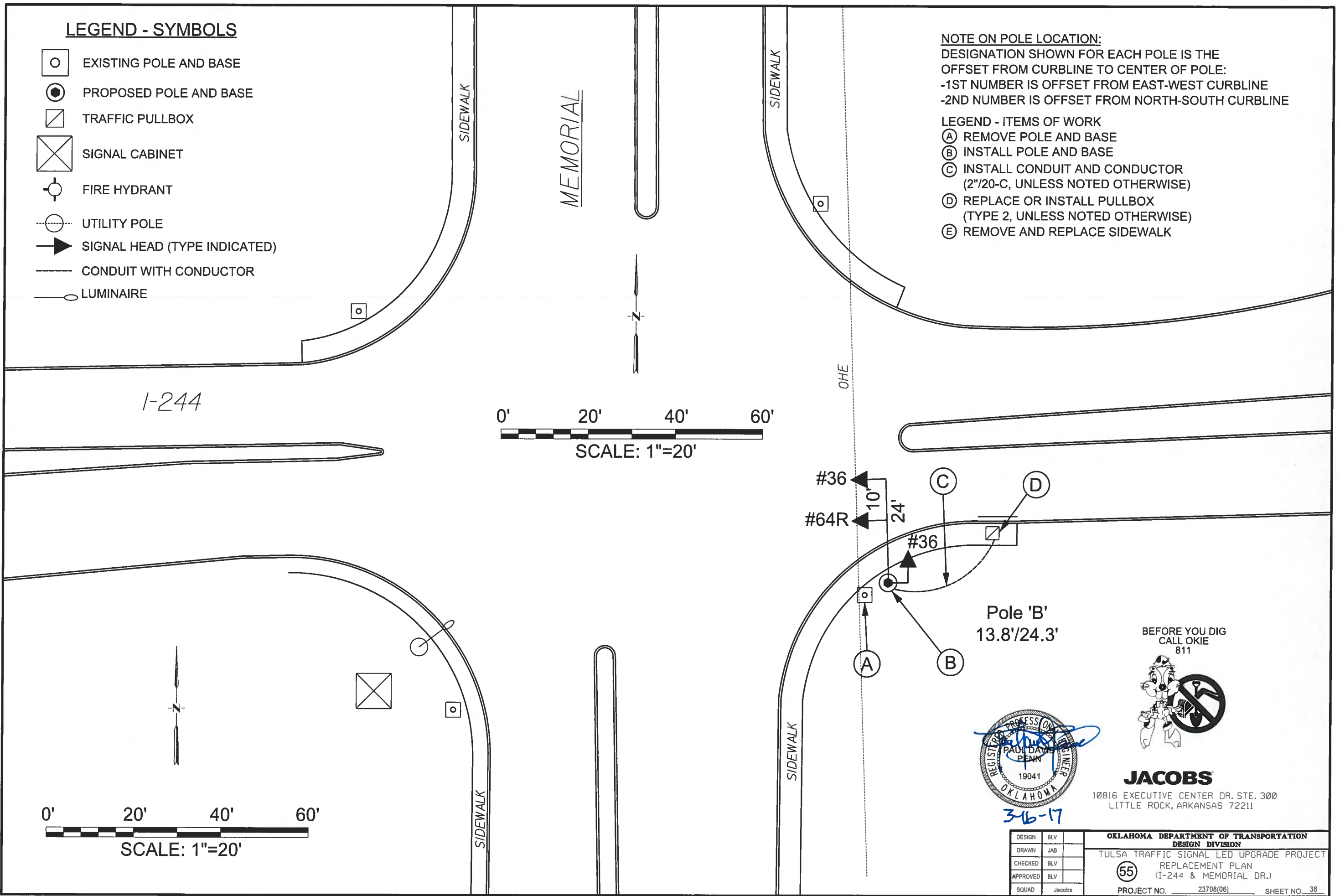


**LEGEND - SYMBOLS**

-  EXISTING POLE AND BASE
-  PROPOSED POLE AND BASE
-  TRAFFIC PULLBOX
-  SIGNAL CABINET
-  FIRE HYDRANT
-  UTILITY POLE
-  SIGNAL HEAD (TYPE INDICATED)
-  CONDUIT WITH CONDUCTOR
-  LUMINAIRE

**NOTE ON POLE LOCATION:**  
 DESIGNATION SHOWN FOR EACH POLE IS THE  
 OFFSET FROM CURBLINE TO CENTER OF POLE:  
 -1ST NUMBER IS OFFSET FROM EAST-WEST CURBLINE  
 -2ND NUMBER IS OFFSET FROM NORTH-SOUTH CURBLINE

- LEGEND - ITEMS OF WORK**
- (A) REMOVE POLE AND BASE
  - (B) INSTALL POLE AND BASE
  - (C) INSTALL CONDUIT AND CONDUCTOR  
(2"/20-C, UNLESS NOTED OTHERWISE)
  - (D) REPLACE OR INSTALL PULLBOX  
(TYPE 2, UNLESS NOTED OTHERWISE)
  - (E) REMOVE AND REPLACE SIDEWALK



BEFORE YOU DIG  
 CALL OKIE  
 811



**JACOBS**

10816 EXECUTIVE CENTER DR. STE. 300  
 LITTLE ROCK, ARKANSAS 72211



3-16-17

DESIGN	BLV	<b>OKLAHOMA DEPARTMENT OF TRANSPORTATION</b> <b>DESIGN DIVISION</b> TULSA TRAFFIC SIGNAL LED UPGRADE PROJECT REPLACEMENT PLAN (I-244 & MEMORIAL DR.) PROJECT NO. 23708(06) SHEET NO. 38
DRAWN	JAB	
CHECKED	BLV	
APPROVED	BLV	
SQUAD	Jacobs	