










**LEGEND - SYMBOLS**

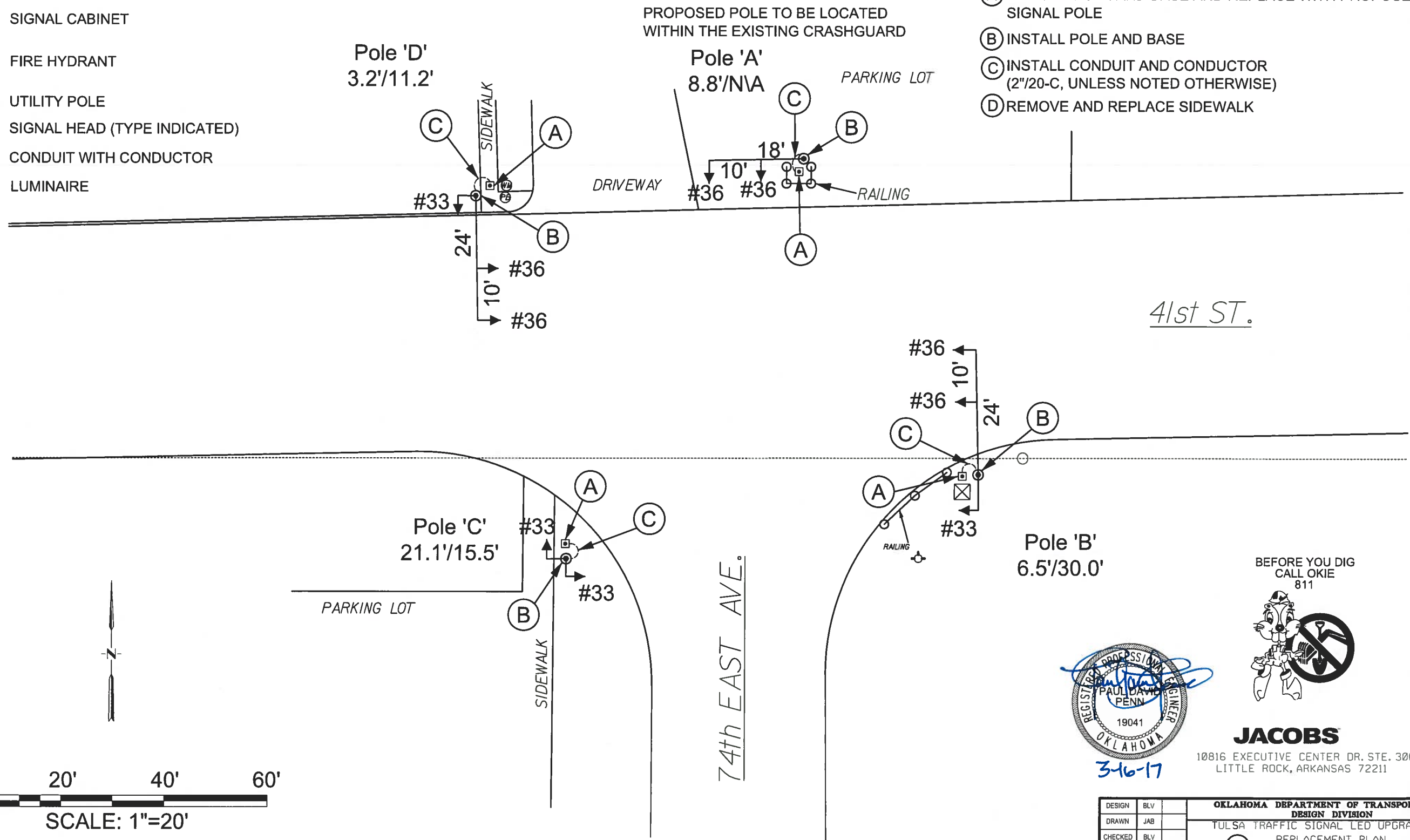
-  EXISTING POLE AND BASE
-  PROPOSED POLE AND BASE
-  TRAFFIC PULLBOX
-  SIGNAL CABINET
-  FIRE HYDRANT
-  UTILITY POLE
-  SIGNAL HEAD (TYPE INDICATED)
-  CONDUIT WITH CONDUCTOR
-  LUMINAIRE

**NOTE ON POLE LOCATION:**

DESIGNATION SHOWN FOR EACH POLE IS THE OFFSET FROM CURBLINE TO CENTER OF POLE:  
 -1ST NUMBER IS OFFSET FROM EAST-WEST CURBLINE  
 -2ND NUMBER IS OFFSET FROM NORTH-SOUTH CURBLINE

**LEGEND - ITEMS OF WORK**

- (A) REMOVE POLE AND BASE AND REPLACE WITH PROPOSED SIGNAL POLE
- (B) INSTALL POLE AND BASE
- (C) INSTALL CONDUIT AND CONDUCTOR (2"/20-C, UNLESS NOTED OTHERWISE)
- (D) REMOVE AND REPLACE SIDEWALK



**JACOBS**  
 10816 EXECUTIVE CENTER DR. STE. 300  
 LITTLE ROCK, ARKANSAS 72211

DESIGN	BLV		<b>OKLAHOMA DEPARTMENT OF TRANSPORTATION</b> <b>DESIGN DIVISION</b> TULSA TRAFFIC SIGNAL LED UPGRADE PROJECT REPLACEMENT PLAN (41st ST. & 74th AVE.) PROJECT NO. 23708(06) SHEET NO. 22
DRAWN	JAB		
CHECKED	BLV		
APPROVED	BLV		
SQUAD	Jacobs		

PRINT DATE: 3/15/2017 SEI/ELS