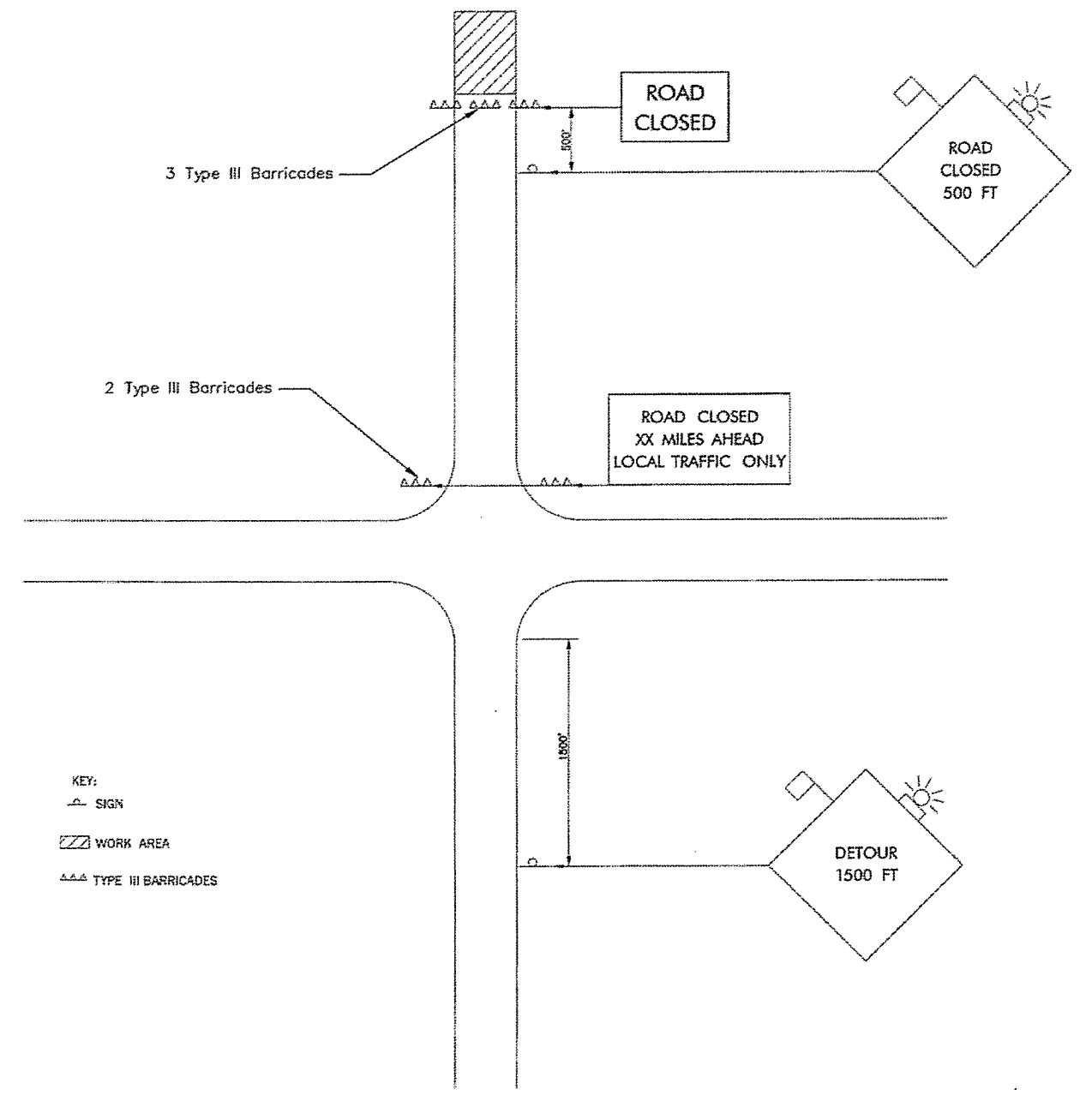


**TYPICAL BARRICADE PLACEMENT AT BRIDGE
FILL BY BRIDGE CONTRACTOR**

FILLS MADE BY BRIDGE CONTRACTOR

- (1) THE CONTRACTOR SHALL PLACE AND MAINTAIN THE BARRICADES AS SHOWN UNTIL THEY ARE NO LONGER NEEDED.
- (2) THE CONTRACTOR SHALL NOTIFY THE ENGINEER PRIOR TO REMOVAL OF THE BARRICADES.
- (3) BARRICADES AT BRIDGE FILL SHALL BE IN PLACE AND MAINTAINED AT ALL TIMES UNTIL OPENED TO TRAFFIC, HOWEVER, BARRICADES MAY BE REMOVED OR ADJUSTED, AS NEEDED, TO ALLOW ACCESS TO THE WORK AREA.



**TYPICAL APPLICATION
COUNTY ROAD (NO DETOUR IS ESTABLISHED)**

WOODS COUNTY

COUNTY ROAD CLOSURE
J/P NO. 28347(04) SHEET NO. 17