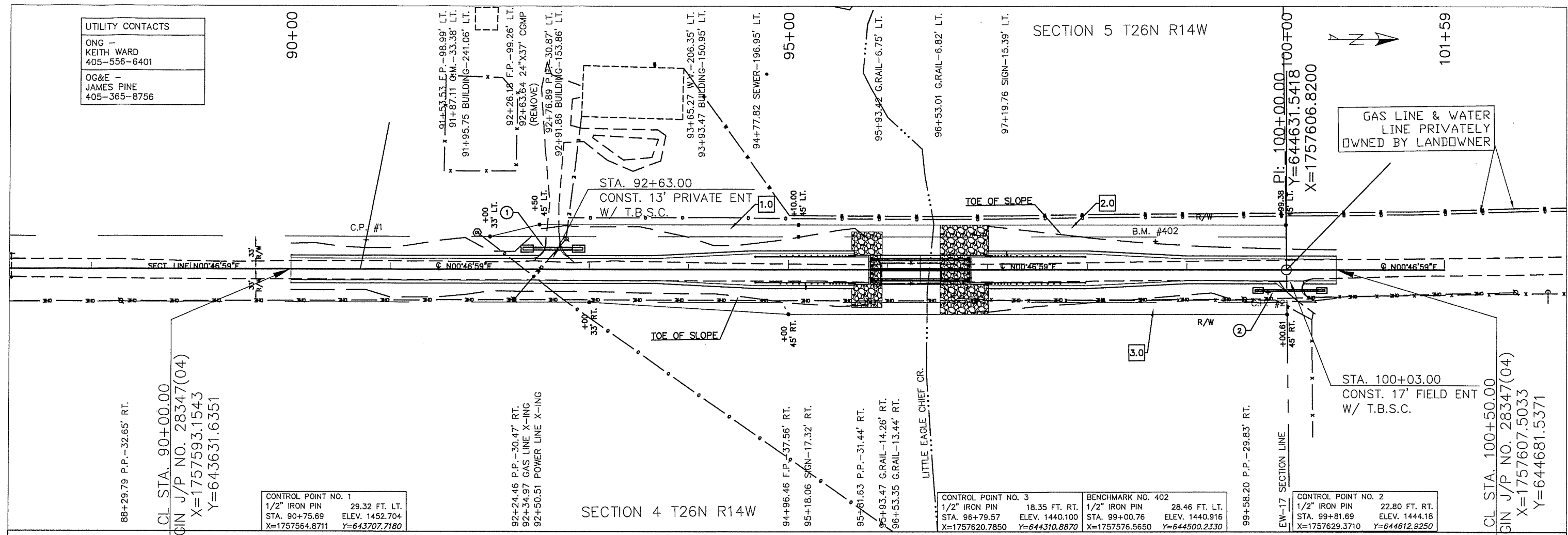
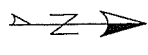


UTILITY CONTACTS	
ONG -	KEITH WARD 405-556-6401
OG&E -	JAMES PINE 405-365-8756

SECTION 5 T26N R14W

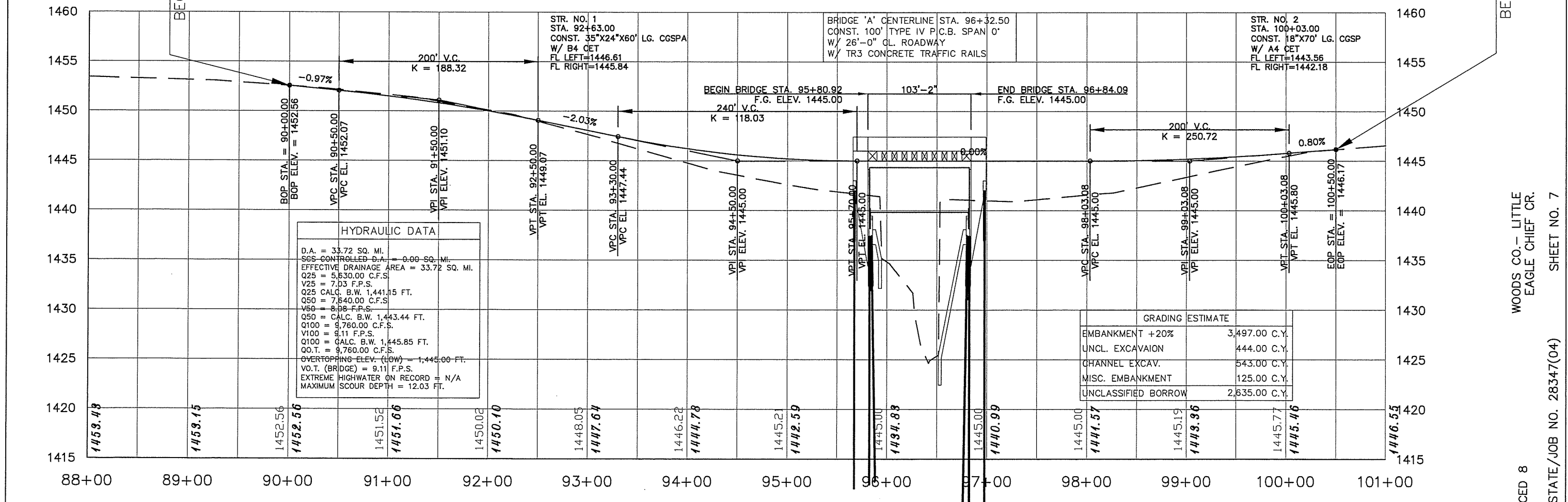


CONTROL POINT NO. 1	
1/2" IRON PIN	29.32 FT. LT.
STA. 90+75.69	ELEV. 1452.704
X=1757564.8711	Y=643707.7180

CONTROL POINT NO. 3	
1/2" IRON PIN	18.35 FT. RT.
STA. 96+79.57	ELEV. 1440.100
X=1757620.7850	Y=644310.8870

BENCHMARK NO. 402	
1/2" IRON PIN	28.46 FT. LT.
STA. 99+00.76	ELEV. 1440.916
X=1757576.5650	Y=644500.2330

CONTROL POINT NO. 2	
1/2" IRON PIN	22.80 FT. RT.
STA. 99+81.69	ELEV. 1444.18
X=1757629.3710	Y=644612.9250



HYDRAULIC DATA	
D.A. = 33.72 SQ. MI.	SQS CONTROLLED D.A. = 0.00 SQ. MI.
EFFECTIVE DRAINAGE AREA = 33.72 SQ. MI.	Q25 = 5,630.00 C.F.S.
V25 = 7.03 F.P.S.	Q25 CALC. B.W. 1,441.15 FT.
Q50 = 7,640.00 C.F.S.	V50 = 8.58 F.P.S.
Q50 = CALC. B.W. 1,443.44 FT.	Q100 = 9,760.00 C.F.S.
V100 = 9.11 F.P.S.	Q100 = CALC. B.W. 1,445.85 FT.
OO.T. = 9,760.00 C.F.S.	OVERTOPPING ELEV. (LOW) = 1,445.00 FT.
VO.T. (BRIDGE) = 9.11 F.P.S.	EXTREME HIGHWATER ON RECORD = N/A
MAXIMUM SCOUR DEPTH = 12.03 FT.	

GRADING ESTIMATE	
EMBANKMENT +20%	3,497.00 C.Y.
UNCL. EXCAVATION	444.00 C.Y.
CHANNEL EXCAV.	543.00 C.Y.
MISC. EMBANKMENT	125.00 C.Y.
UNCLASSIFIED BORROW	2,635.00 C.Y.

WOODS CO. - LITTLE EAGLE CHIEF CR.
SHEET NO. 7
STATE/JOB NO. 28347(04)
CED 8