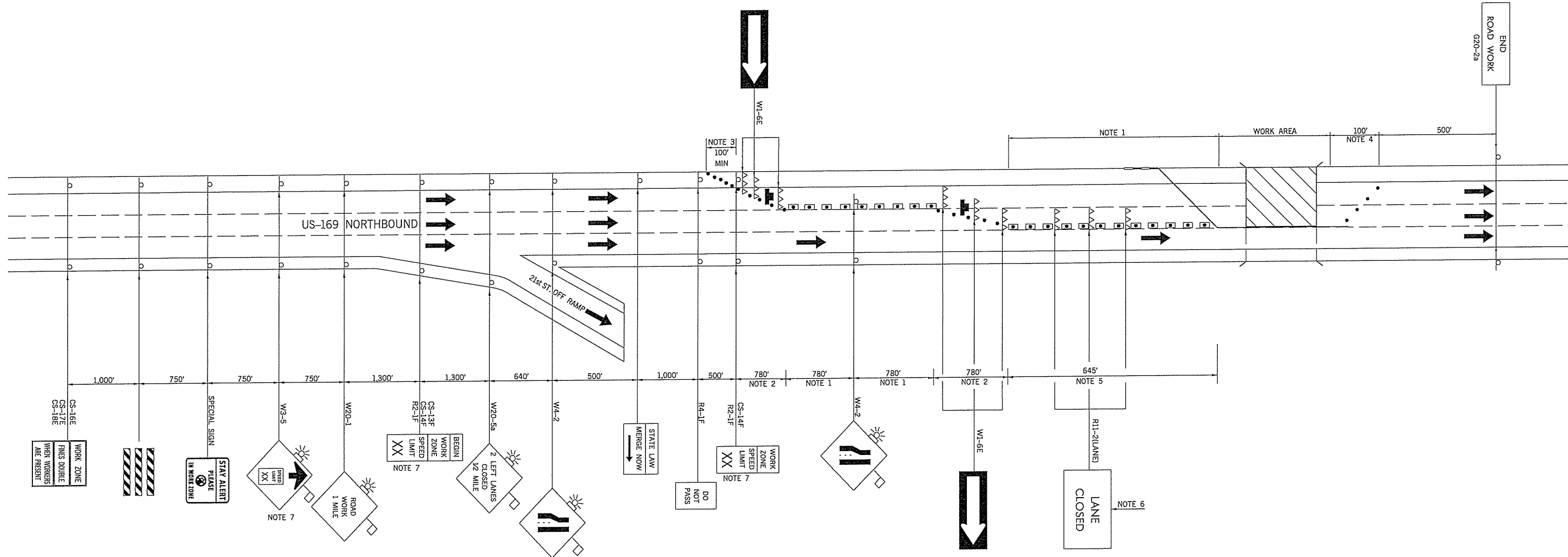


REV. NO.	DESCRIPTION	REVISIONS



**NOTE 1**  
 MAXIMUM SPACING BETWEEN CHANNELIZING DEVICES (FEET) SHALL BE EQUAL TO THE POSTED SPEED LIMIT (M.P.H.) WITH THE FOLLOWING EXCEPTIONS. SPACING SHALL NOT EXCEED 50 FEET FOR CONES OR TUBE CHANNELIZERS; IT SHALL NOT EXCEED 75 FEET FOR CHANNELIZER CONES; IT SHALL NOT EXCEED 100 FEET FOR TYPE II BARRICADES, VERTICAL PANELS OR DRUMS.

**NOTE 2**  
 MAXIMUM SPACING BETWEEN CHANNELIZING DEVICES (FEET) SHALL BE EQUAL TO THE POSTED SPEED LIMIT (M.P.H.) WITH THE FOLLOWING EXCEPTIONS. SPACING SHALL NOT EXCEED 25 FEET FOR CONES OR TUBE CHANNELIZERS; IT SHALL NOT EXCEED 50 FEET FOR TYPE II BARRICADES, VERTICAL PANELS OR DRUMS.

**NOTE 3**  
 A MINIMUM OF FIVE (5) CHANNELIZING DEVICES SHALL BE PLACED THROUGH THIS TAPER.

**NOTE 4**  
 DOWNSTREAM TAPERS SHALL CONTAIN A MINIMUM OF FOUR (4) CHANNELIZING DEVICES.

**NOTE 5**  
 A LONGITUDINAL BUFFER AREA, TO ALLOW WORKERS TIME TO EVACUATE THE WORK AREA, SHOULD BE PROVIDED. FOR GUIDELINES ON SETTING THE LENGTH OF THIS BUFFER, SEE STANDARD DRAWING TCS2-1-(LATEST REVISION). ACTUAL LENGTH SHALL BE DETERMINED BY FIELD CONDITIONS AND THE JUDGEMENT OF THE ENGINEER.

**NOTE 6**  
 TYPE III BARRICADES WITH SIGNS READING "LANE CLOSED" (R11-2) SHALL BE PLACED EVERY 2,000 FEET THROUGH ACTIVITY AREA. THESE TYPE III BARRICADES AND SIGNS MAY BE OMITTED ON MOVING OPERATIONS AND SHORT DURATION PROJECTS.

**NOTE 7**  
 CONSTRUCTION SPEED LIMIT TO BE DETERMINED BY THE DIVISION ENGINEER.

FOR ADDITIONAL INFORMATION ABOUT TAPER LENGTHS AND SPACING OF CHANNELIZING DEVICES, SEE STANDARD DRAWING TCS2-1-(LATEST REVISION).

SOUTHBOUND US-169 TRAFFIC CONTROL TO MIRROR NORTHBOUND US-169 TRAFFIC CONTROL AS SHOWN

- SIGN
- DRUM
- ▨ WORK AREA
- ➔ ARROW DISPLAY
- ▲▲▲ TYPE III BARRICADES
- ◻ CHANNELIZER CONE
- C. Z. IMPACT ATTENUATOR
- PORT. LONG. BARRIER

<b>TRAFFIC CONTROL BRIDGE "B"</b>			Drawn RGN 6/16
US-169 OVER E. 21st ST. NORTHBOUND			Design RGN 6/16
INSIDE LANES & SHOULDER			Checked SB 6/16
Traffic Engineering JAMI L. SHORT			
STATE OF OKLAHOMA	DEPARTMENT OF TRANSPORTATION		SHEET NO. T003
DIVISION 8	STATE JOB NO. 32565(05)	TULSA CO. US-169	

DRAWING NOT TO SCALE