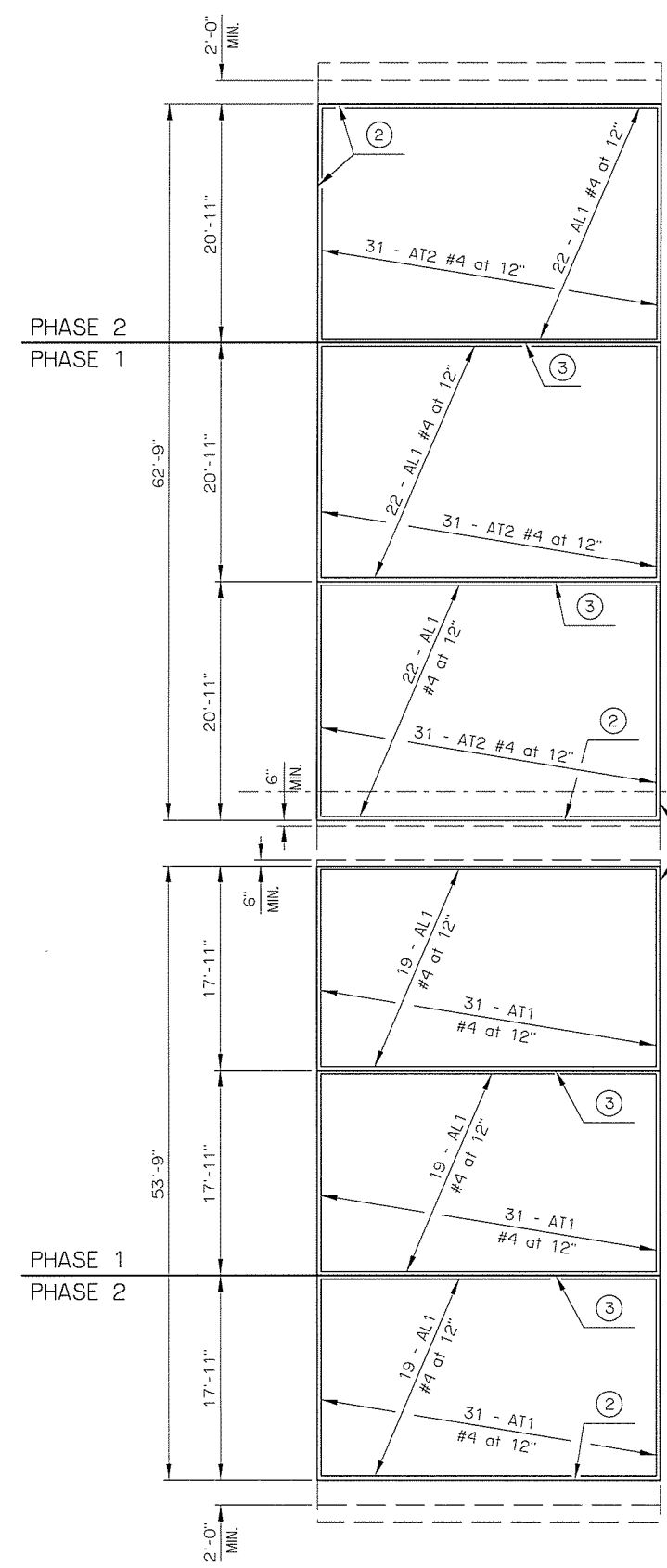
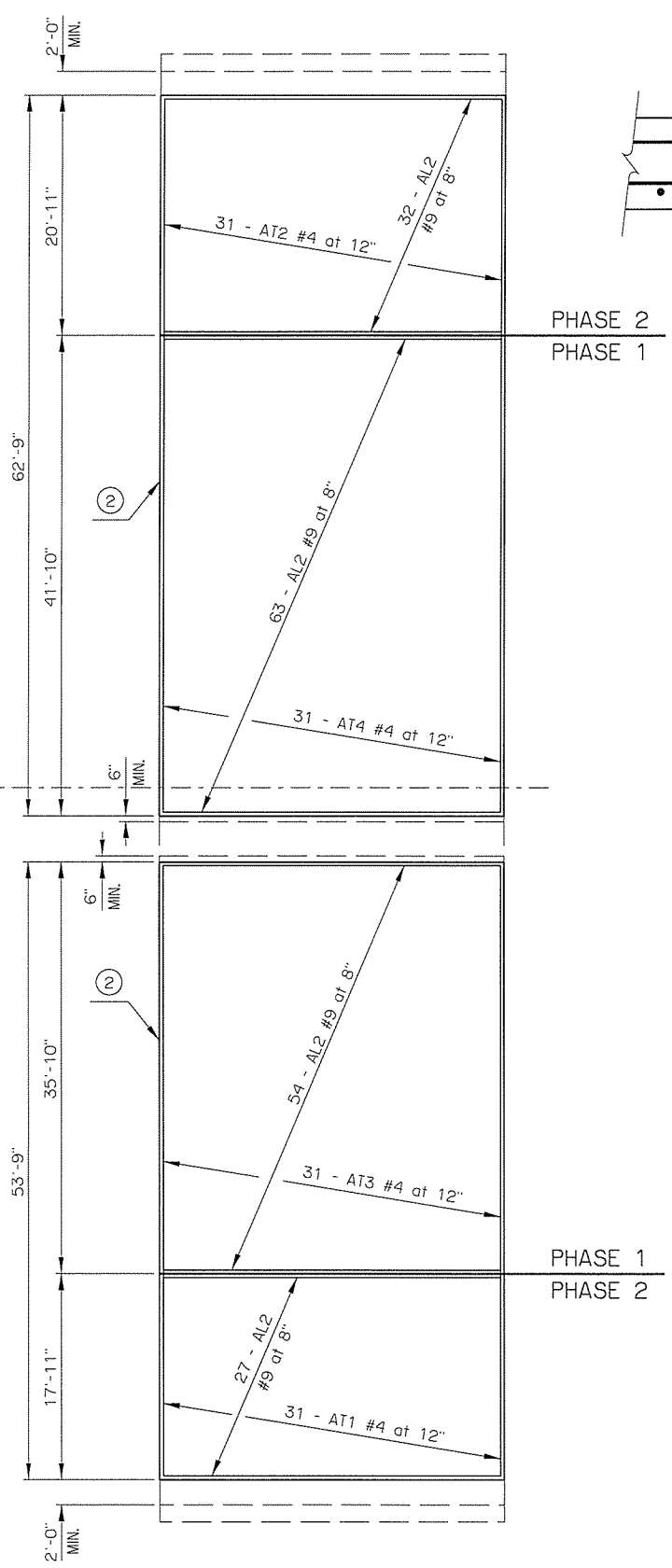


REV. NO.	DESCRIPTION	REVISIONS	DATE

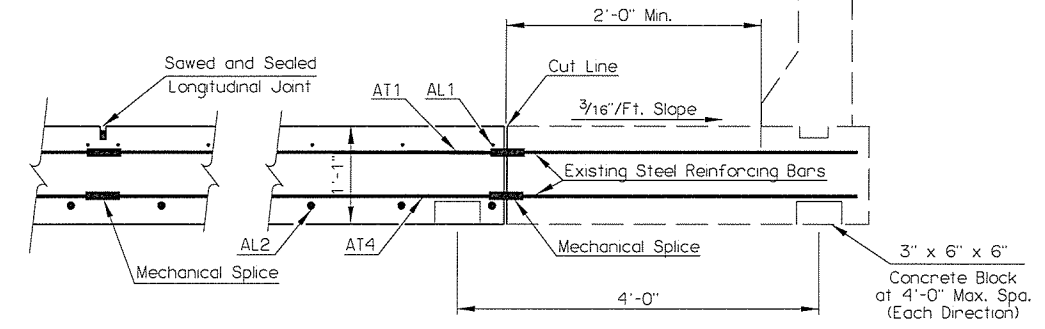


TOP REINFORCING MAT DETAIL

- ② SAWED AND SEALED CONSTRUCTION JOINT (SEE "GENERAL PLAN AND TYPICAL CROSS SECTION" BRIDGE A FOR DETAIL)
- ③ SAWED AND SEALED LONGITUDINAL JOINT (SEE STD. LECS-4)



BOTTOM REINFORCING MAT DETAIL



BAR LIST - APPROACH SLABS (PHASE 1)

MARK	NO.	SIZE	FORM	LENGTH	VARIANCE
EPOXY COATED					
AT1	62	#4	STR.	17'-7"	_____
AT2	62	#4	STR.	20'-7"	_____
AT3	31	#4	STR.	35'-6"	_____
AT4	31	#4	STR.	41'-6"	_____
AL1	82	#4	STR.	29'-10"	_____
AL2	117	#9	STR.	29'-10"	_____

BAR LIST - APPROACH SLABS (PHASE 1)

MARK	NO.	SIZE	FORM	LENGTH	VARIANCE
EPOXY COATED					
AT1	62	#4	STR.	17'-7"	_____
AT2	62	#4	STR.	20'-7"	_____
AL1	41	#4	STR.	29'-10"	_____
AL2	59	#9	STR.	29'-10"	_____

QUANTITIES - APPROACH SLABS (ONE SHOWN, TWO REQUIRED)

ITEM	UNIT	TOTAL
① Approach Slab	S.Y.	388.40
Saw-Cut Grooving	S.Y.	346.40
Mechanical Splices	EA.	310.00
Deck Area Sealed (Floodcoat)	S.Y.	509.00

① The Department considers the cost of Concrete, Reinforcing Steel, Backer Rod, Rapid Cure Joint Sealant, Polystyrene, and Polyethylene Sheeting to be included in the contract unit price of APPROACH SLAB. There is an estimated 420.70 C.Y. of Class AA Concrete and an estimated 25,060 LB. of Epoxy Coated Reinforcing Steel in each Approach Slab.

US-169 OVER 21ST BRIDGE "B"	TULSA COUNTY	Design	N/A	N/A
		Detail	RLA	6/16
		Check	KMS	6/16
		Squad:	MAYFIELD	
		Engr:	ELYAZGI	
STATE OF OKLAHOMA	DEPARTMENT OF TRANSPORTATION	JOB PIECE NO.	32565(05)	
		SHEET NO.	B005	