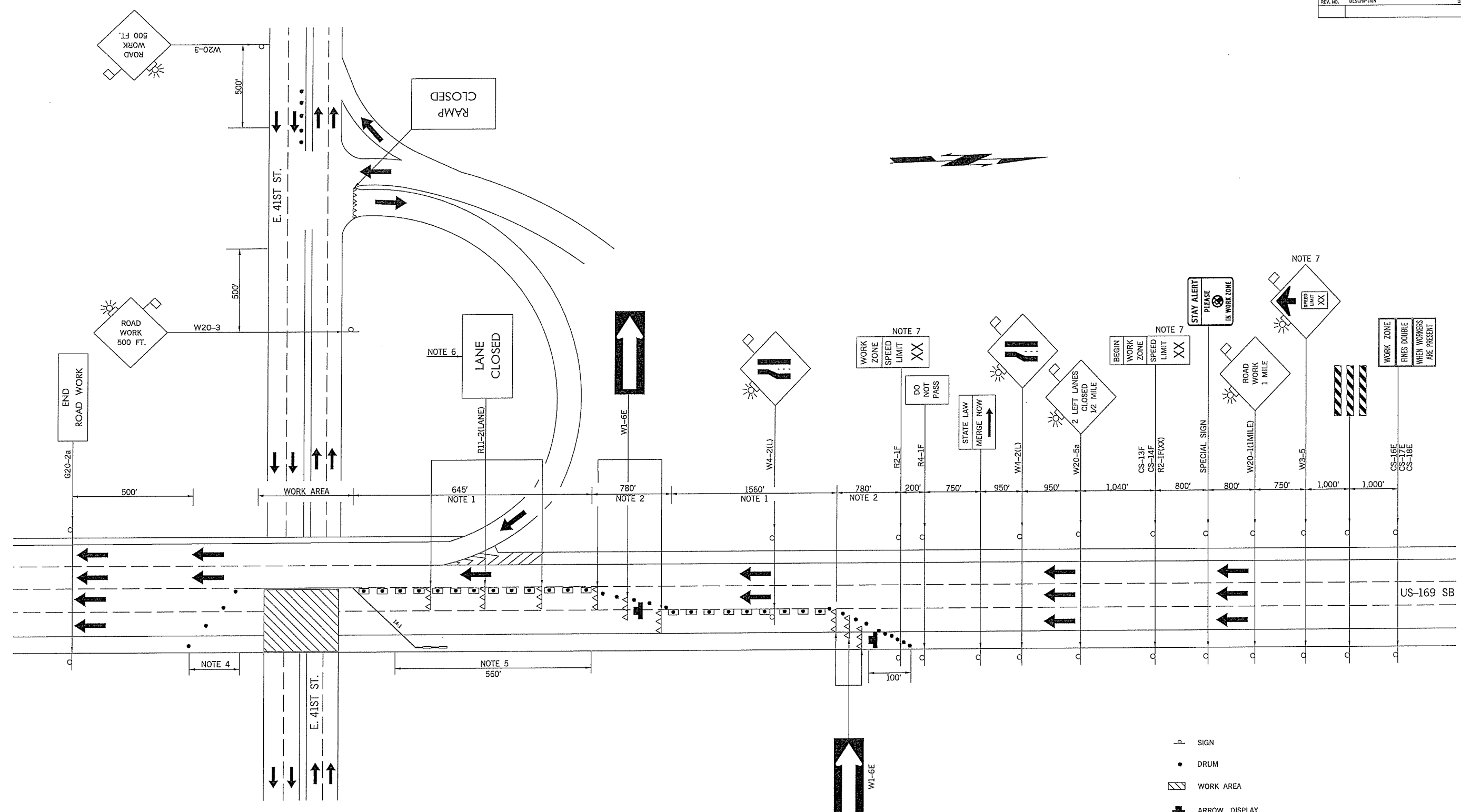


REV. NO.	DESCRIPTION	REVISIONS	DATE



**NOTE 1**  
 MAXIMUM SPACING BETWEEN CHANNELIZING DEVICES (FEET) SHALL BE EQUAL TO TWICE THE POSTED SPEED LIMIT (M.P.H.) WITH THE FOLLOWING EXCEPTIONS. SPACING SHALL NOT EXCEED 50 FEET FOR CONES OR TUBE CHANNELIZERS. SPACING SHALL NOT EXCEED 75 FEET FOR CHANNELIZER CONES. SPACING SHALL NOT EXCEED 100 FEET FOR TYPE III BARRICADES, VERTICAL PANELS OR DRUMS.

**NOTE 2**  
 MAXIMUM SPACING BETWEEN CHANNELIZING DEVICES (FEET) SHALL BE EQUAL TO THE POSTED SPEED LIMIT (M.P.H.) WITH THE FOLLOWING EXCEPTIONS. SPACING SHALL NOT EXCEED 25 FEET FOR CONES OR TUBE CHANNELIZERS. SPACING SHALL NOT EXCEED 50 FEET FOR TYPE III BARRICADES, VERTICAL PANELS OR DRUMS.

**NOTE 3**  
 A MINIMUM OF FIVE (5) CHANNELIZING DEVICES SHALL BE PLACED THROUGH THIS TAPER.

**NOTE 4**  
 DOWNSTREAM TAPERS SHALL CONTAIN A MINIMUM OF FOUR (4) CHANNELIZING DEVICES.

**NOTE 5**  
 A LONGITUDINAL BUFFER AREA, TO ALLOW WORKERS TIME TO EVACUATE THE WORK AREA, SHOULD BE PROVIDED. FOR GUIDELINES ON SETTING THE LENGTH OF THIS BUFFER, SEE STANDARD DRAWING TCS2-1-(LATEST REVISION). ACTUAL LENGTH SHALL BE DETERMINED BY FIELD CONDITIONS AND THE JUDGEMENT OF THE ENGINEER.

**NOTE 6**  
 TYPE III BARRICADES WITH SIGNS READING "LANE CLOSED" (R11-2) SHALL BE PLACED EVERY 2,000 FEET THROUGH ACTIVITY AREA. THESE TYPE III BARRICADES AND SIGNS MAY BE OMITTED ON MOVING OPERATIONS AND SHORT DURATION PROJECTS.

**NOTE 7**  
 CONSTRUCTION SPEED LIMIT TO BE DETERMINED BY THE DIVISION ENGINEER.

FOR ADDITIONAL INFORMATION ABOUT TAPER LENGTHS AND SPACING OF CHANNELIZING DEVICES, SEE STANDARD DRAWING TCS2-1-(LATEST REVISION).

- ⊥ SIGN
- DRUM
- ▨ WORK AREA
- ➔ ARROW DISPLAY
- ▲▲▲ TYPE III BARRICADES
- ◉ CHANNELIZER CONE
- C. Z. IMPACT ATTENUATOR
- PORT. LONG. BARRIER

TRAFFIC CONTROL DETAIL BRIDGE 'C' US-169 OVER E. 41st ST. SOUTHBOUND INSIDE LANES & SHOULDER			Drawn	RGN	6-16
			Design	RGN	6-16
			Checked	SB	6-16
			TRAFFIC ENGINEERING JAMI L. SHORT		
STATE OF OKLAHOMA		DEPARTMENT OF TRANSPORTATION		SHEET NO. T005	
DIVISION 8		STATE JOB NO. 31672(04)		TULSA CO. US-169	

DRAWING NOT TO SCALE