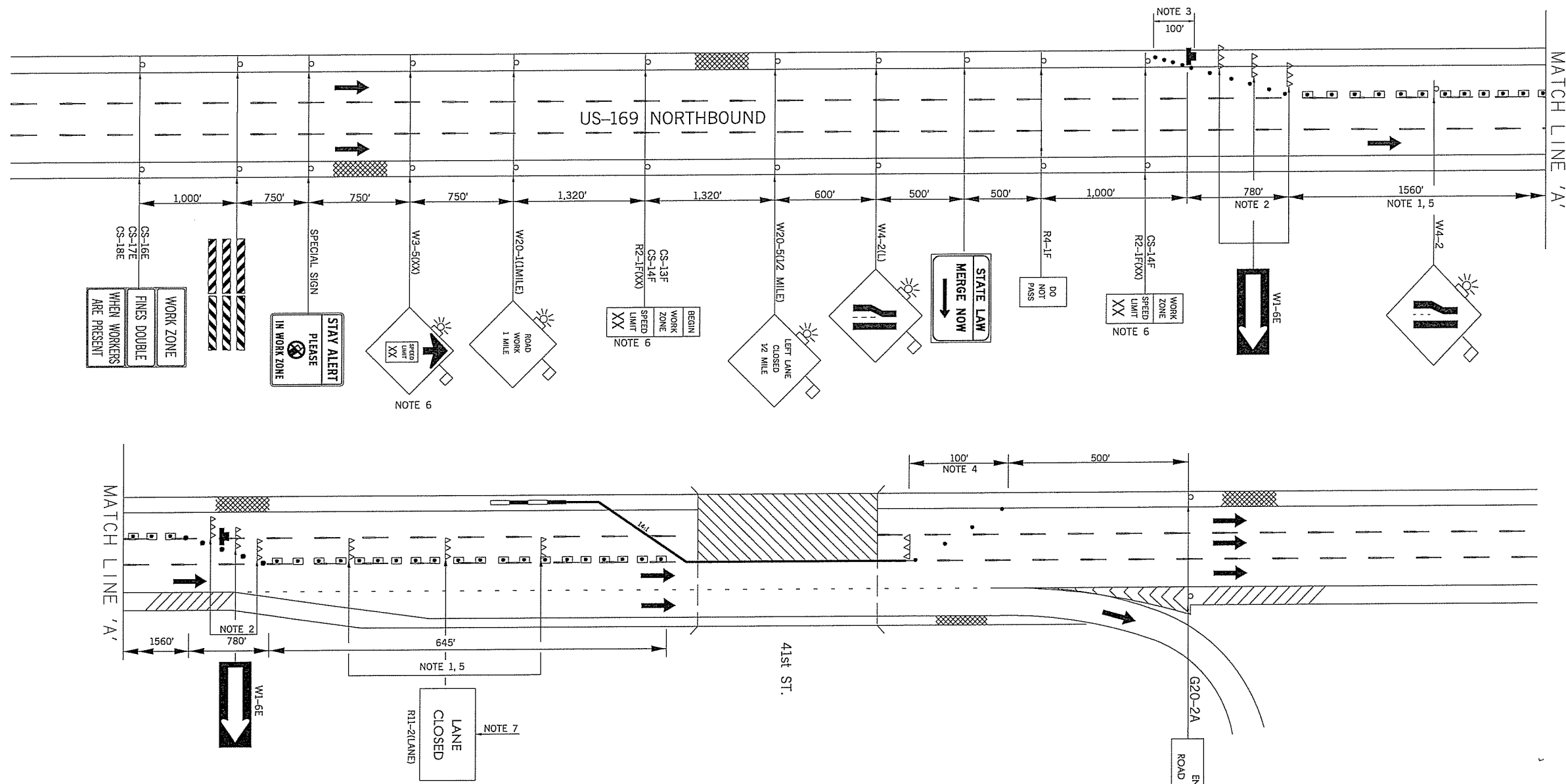


REV. NO.	DESCRIPTION	REVISIONS	DATE



NOTE 1
 MAXIMUM SPACING BETWEEN CHANNELIZING DEVICES (FEET) SHALL BE EQUAL TO TWICE THE POSTED SPEED LIMIT (M.P.H.) WITH THE FOLLOWING EXCEPTIONS. SPACING SHALL NOT EXCEED 50 FEET FOR CONES OR TUBE CHANNELIZERS. SPACING SHALL NOT EXCEED 75 FEET FOR CHANNELIZER CONES. SPACING SHALL NOT EXCEED 100 FEET FOR TYPE II BARRICADES, VERTICAL PANELS OR DRUMS.

NOTE 2
 MAXIMUM SPACING BETWEEN CHANNELIZING DEVICES (FEET) SHALL BE EQUAL TO THE POSTED SPEED LIMIT (M.P.H.) WITH THE FOLLOWING EXCEPTIONS. SPACING SHALL NOT EXCEED 25 FEET FOR CONES OR TUBE CHANNELIZERS. SPACING SHALL NOT EXCEED 50 FEET FOR TYPE II BARRICADES, VERTICAL PANELS OR DRUMS.

NOTE 3
 A MINIMUM OF FIVE (5) CHANNELIZING DEVICES SHALL BE PLACED THROUGH THIS TAPER.

NOTE 4
 DOWNSTREAM TAPERS SHALL CONTAIN A MINIMUM OF FOUR (4) CHANNELIZING DEVICES.

NOTE 5
 A LONGITUDINAL BUFFER AREA, TO ALLOW WORKERS TIME TO EVACUATE THE WORK AREA, SHOULD BE PROVIDED. FOR GUIDELINES ON SETTING THE LENGTH OF THIS BUFFER, SEE STANDARD DRAWING TCS2-1-(LATEST REVISION). ACTUAL LENGTH SHALL BE DETERMINED BY FIELD CONDITIONS AND THE JUDGEMENT OF THE ENGINEER.

NOTE 6
 CONSTRUCTION SPEED LIMIT TO BE DETERMINED BY THE DIVISION ENGINEER.

NOTE 7
 TYPE III BARRICADES WITH SIGNS READING "LANE CLOSED" (R11-2) SHALL BE PLACED EVERY 2,000 FEET THROUGH ACTIVITY AREA. THESE TYPE III BARRICADES AND SIGNS MAY BE OMITTED ON MOVING OPERATIONS AND SHORT DURATION PROJECTS.

FOR ADDITIONAL INFORMATION ABOUT TAPER LENGTHS AND SPACING OF CHANNELIZING DEVICES, SEE STANDARD DRAWING TCS2-1-(LATEST REVISION).

- KEY:**
- ▲ SIGN
 - DRUM
 - ARROW DISPLAY
 - ▲▲▲ TYPE III BARRICADE
 - CHANNELIZER CONE
 - C. Z. IMPACT ATTENUATOR
 - PORT. LONG. BARRIER
 - ▨ WORK AREA

TRAFFIC CONTROL DETAIL			
BRIDGE 'C'			
US-169 OVER E. 41st ST. NORTHBOUND			
INSIDE LANES & SHOULDER			
Drawn	RGN	6-16	TRAFFIC ENGINEERING JAMI L. SHORT
Design	RGN	6-16	
Checked	SB	6-16	
STATE OF OKLAHOMA		DEPARTMENT OF TRANSPORTATION	
DIVISION 8		STATE JOB NO. 31672(04)	
			SHEET NO. T004
TULSA CO. US-169			

DRAWING NOT TO SCALE