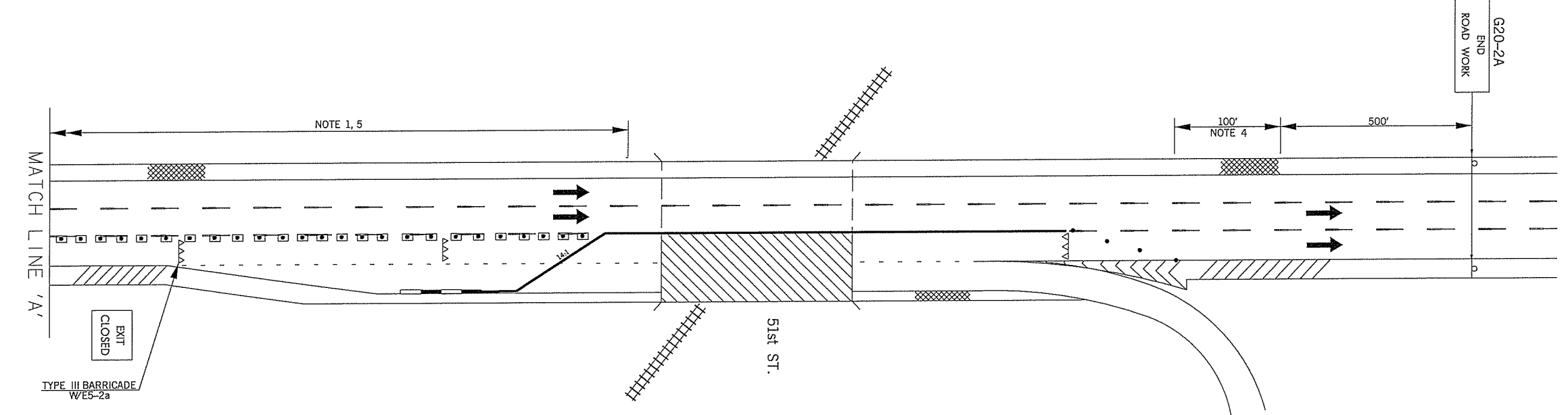
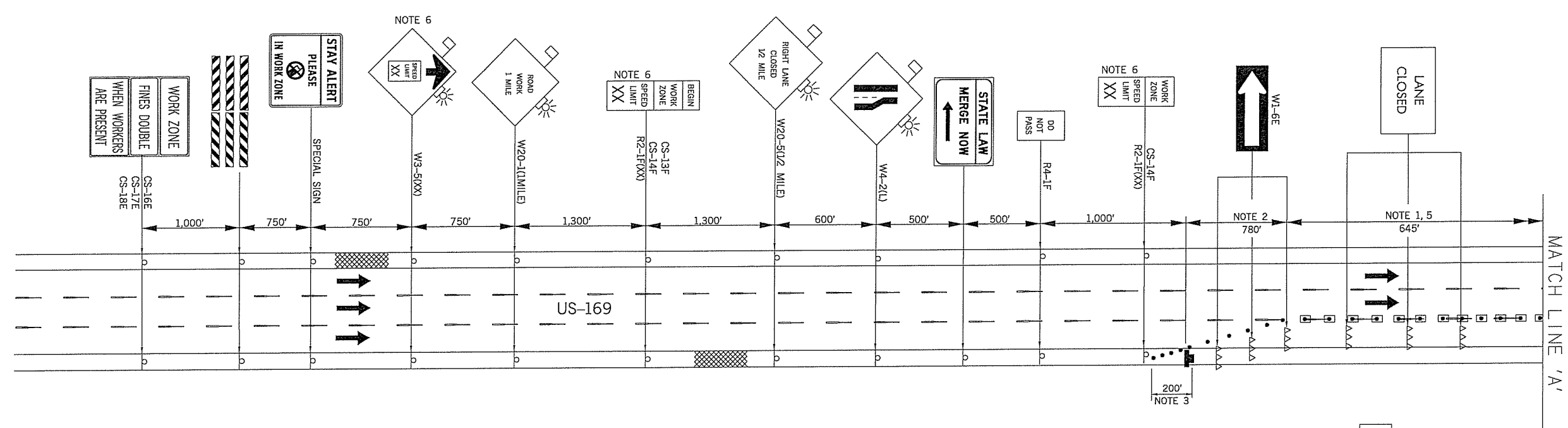


REV. NO.	DESCRIPTION	REVISIONS	DATE



**NOTE 1**  
 MAXIMUM SPACING BETWEEN CHANNELIZING DEVICES (FEET) SHALL BE EQUAL TO TWICE THE POSTED SPEED LIMIT (M.P.H.) WITH THE FOLLOWING EXCEPTIONS. SPACING SHALL NOT EXCEED 50 FEET FOR CONES OR TUBE CHANNELIZERS. SPACING SHALL NOT EXCEED 75 FEET FOR CHANNELIZER CONES. SPACING SHALL NOT EXCEED 100 FEET FOR TYPE II BARRICADES, VERTICAL PANELS OR DRUMS.

**NOTE 2**  
 MAXIMUM SPACING BETWEEN CHANNELIZING DEVICES (FEET) SHALL BE EQUAL TO THE POSTED SPEED LIMIT (M.P.H.) WITH THE FOLLOWING EXCEPTIONS. SPACING SHALL NOT EXCEED 25 FEET FOR CONES OR TUBE CHANNELIZERS. SPACING SHALL NOT EXCEED 50 FEET FOR TYPE II BARRICADES, VERTICAL PANELS OR DRUMS.

**NOTE 3**  
 A MINIMUM OF FIVE (5) CHANNELIZING DEVICES SHALL BE PLACED THROUGH THIS TAPER.

**NOTE 4**  
 DOWNSTREAM TAPERS SHALL CONTAIN A MINIMUM OF FOUR (4) CHANNELIZING DEVICES.

**NOTE 5**  
 A LONGITUDINAL BUFFER AREA, TO ALLOW WORKERS TIME TO EVACUATE THE WORK AREA, SHOULD BE PROVIDED. FOR GUIDELINES ON SETTING THE LENGTH OF THIS BUFFER, SEE STANDARD DRAWING TCS2-1-(LATEST REVISION). ACTUAL LENGTH SHALL BE DETERMINED BY FIELD CONDITIONS AND THE JUDGEMENT OF THE ENGINEER.

**NOTE 6**  
 CONSTRUCTION SPEED LIMIT TO BE DETERMINED BY THE DIVISION ENGINEER.

FOR ADDITIONAL INFORMATION ABOUT TAPER LENGTHS AND SPACING OF CHANNELIZING DEVICES, SEE STANDARD DRAWING TCS2-1-(LATEST REVISION).

NORTHBOUND & SOUTHBOUND US-169  
 TRAFFIC CONTROL SHALL MIRROR EACH OTHER

- KEY:
- P — SIGN
  - DRUM
  - ▲ ARROW DISPLAY
  - ▲▲▲ TYPE III BARRICADE
  - ◻ CHANNELIZER CONE
  - C. Z. IMPACT ATTENUATOR
  - PORT. LONG. BARRIER
  - ▨ WORK AREA

DRAWING NOT TO SCALE

<b>TRAFFIC CONTROL DETAIL</b>		
<b>BRIDGES 'A' &amp; 'B'</b>		
<b>US-169 OVER E. 51st ST. &amp; RR</b>		
<b>OUTSIDE LANES &amp; SHOULDER</b>		
Drawn	RGN	6-16
Design	RGN	6-16
Checked	SB	6-16
TRAFFIC ENGINEERING JAMI L. SHORT		
STATE OF OKLAHOMA	DEPARTMENT OF TRANSPORTATION	
DIVISION 8	STATE JOB NO. 31672(04)	SHEET NO. 001
TULSA COUNTY US-169		