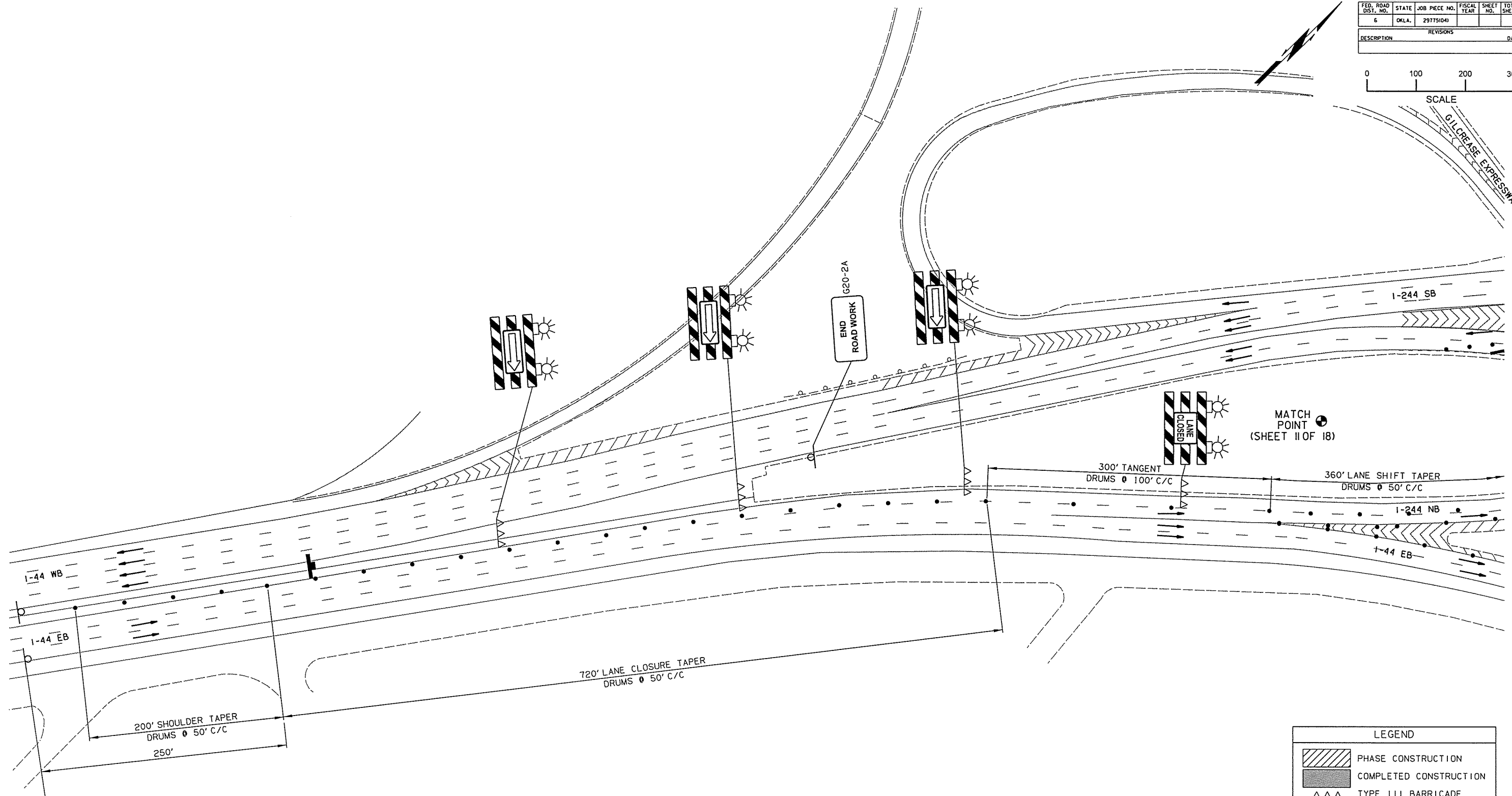
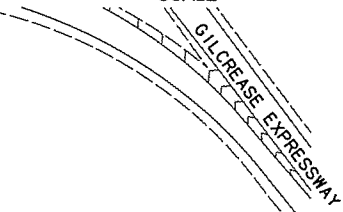
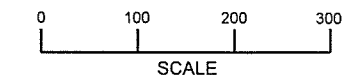


FED. ROAD DIST. NO.	STATE	JOB PIECE NO.	FISCAL YEAR	SHEET NO.	TOTAL SHEETS
6	OKLA.	29775(04)			

DESCRIPTION	REVISIONS	DATE



FOR ADVANCED WARNING
TRAFFIC CONTROL
FOR ALL PHASES
SEE SHEETS 44-46.

- NOTE:
1. CONSTRUCTION SIGNS SHALL BE VISIBLE ONLY WHEN ACTIVITIES WARRANT. TO BE COVERED OR REMOVED WHEN NOT IN USE.
 2. EXISTING SIGNS THAT WOULD INTERFERE WITH CONSTRUCTION ZONE SIGNING SHALL BE REMOVED OR COVERED.
 3. ANY EXISTING CONFLICTING STRIPING SHALL BE REMOVED PRIOR TO SHIFTING TRAFFIC.
 4. DIRECTIVES FROM STANDARD PDT-1 "PAVEMENT DROP-OFF TREATMENTS" SHALL BE FOLLOWED AT ALL TIMES.
 5. (1)W1-8 SHALL BE PLACED ON EVERY OTHER DRUM THRU LANE TAPERS. (1)R4-7A(R) OR (1)R4-7A(L) (AS APPLIES) SHALL BE PLACED ON EVERY OTHER DRUM THRU TANGENT LANES.
 6. THE ENDS OF THE PORTABLE CONCRETE MEDIAN BARRIER MUST EITHER BE FLARED TO OUTSIDE OF CLEAR ZONE (PER AASHTO ROADSIDE DESIGN GUIDE LATEST EDITION) OR PROTECTED BY A ODOT APPROVED ATTENUATOR AT ALL TIMES.
 7. GUIDELINES FROM THE 2009 MUTCD SHALL GOVERN.
 8. BARRIER LENGTH NOTES ARE FOR CONTINUOUS RUN AND NOT SPLIT PER SHEET.

LEGEND	
	PHASE CONSTRUCTION
	COMPLETED CONSTRUCTION
	TYPE III BARRICADE
	TRAFFIC FLOW
	SIGN
	CHANNELIZING DEVICE
	ARROW BOARD
	PORT. LONGITUDINAL BARRIER (P.L.B.)

DESIGN	MDF	3/16	1-44 OVER I-244 NB SUGGESTED CONSTRUCTION SEQUENCE AND TRAFFIC CONTROL (SHEET 10 OF 18)	PHASE 1B
DRAWN	TML	3/16		
CHECKED	KMM	5/16		
APPROVED				
SQUAD	GARVER			
STATE JOB NO. 29775(04)			SHEET NO. 53	