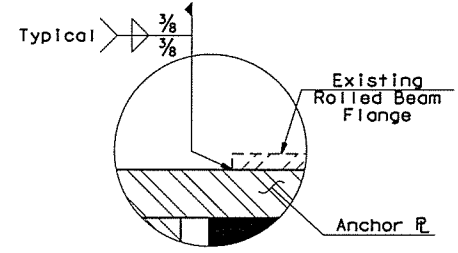
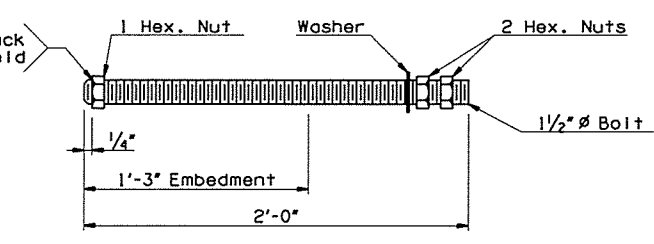
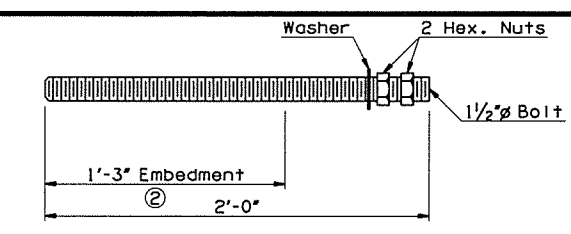
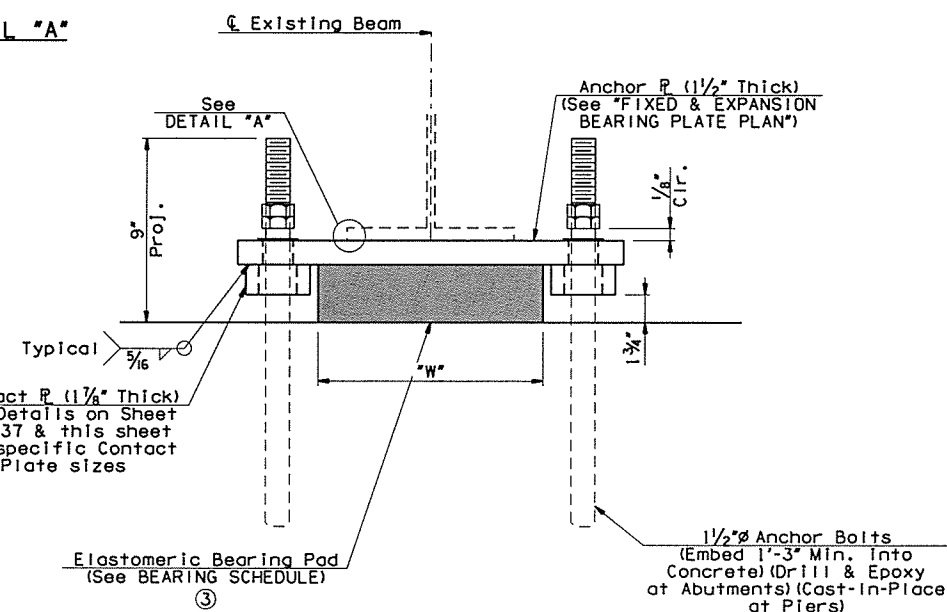


- No existing reinforcing bars in the existing Abutment Caps or Pier Cap supporting the bearing shall be cut during the installation of the Anchor Bolts. The location of the Anchor Bolts may be adjusted to accommodate this requirement. However, the Anchor Bolts shall be set as close to the \bar{C} Anchor Bolts as possible.
- Actual embedment length for drilled and epoxy anchors shall be determined by the Anchorage Assembly Manufacturer and approved by the Engineer. See Sheet No. 4 for additional requirements.
- Bond Anchor Plate to the Elastomeric Bearing Pad per Section 733.06B of the Standard Specifications.
- Total estimated weight of Structural Steel per Bearing.



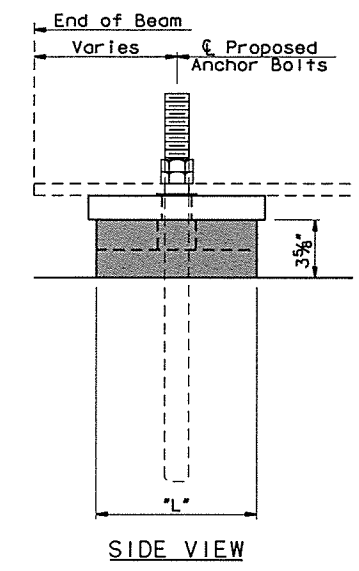
DETAIL "A"



DETAILS OF NEW BEARING ASSEMBLIES
 (Completely Remove Existing Bearing Assemblies (34 Total) & Cut Existing Anchor Bolts Flush with Tops of Pedestals)

BEARING ASSEMBLY WEIGHT TABLE

BEARING ASSEMBLY	WEIGHT (4)
1-E	225.40 LB.
1-F	173.90 LB.
2-E	207.50 LB.
2-F	210.10 LB.
3-F	118.90 LB.
4-F	176.10 LB.
5-F	127.40 LB.



BEVELED ANCHOR PLATE VARIABLES

LOCATION	"A"	"B"
ABUTMENT NO. 1	1.39"	1.61"
PIER NO. 1	BACK STATION	1.35" 1.65"
	FORWARD STATION	1.40" 1.60"
PIER NO. 2	BACK STATION	1.40" 1.60"
	FORWARD STATION	1.41" 1.59"
ABUTMENT NO. 2	1.44"	1.56"

BEARING SCHEDULE

LOCATION	60 DUROMETER ELASTOMERIC BEARING PAD			
	SIZE (T x L x W)	COVER LAYER	INNER LAYER	LAMINATE PLATE
ABUTMENT NO. 1	3 5/8" x 10" x 1'-2"	2 - 1/4"	6 - 3/8"	7 - 1/8"
PIER NO. 1	BACK STA. 3 5/8" x 10" x 1'-2"	2 - 1/4"	6 - 3/8"	7 - 1/8"
	UP STA. 3 5/8" x 8" x 1'-4"	2 - 1/4"	6 - 3/8"	7 - 1/8"
PIER NO. 2	BACK STA. 3 5/8" x 8" x 1'-4"	2 - 1/4"	6 - 3/8"	7 - 1/8"
	UP STA. 3 5/8" x 10" x 1'-2"	2 - 1/4"	6 - 3/8"	7 - 1/8"
ABUTMENT NO. 2	3 5/8" x 10" x 1'-2"	2 - 1/4"	6 - 3/8"	7 - 1/8"

