

BAR LIST - SUPERSTRUCTURE PHASE I CONSTRUCTION

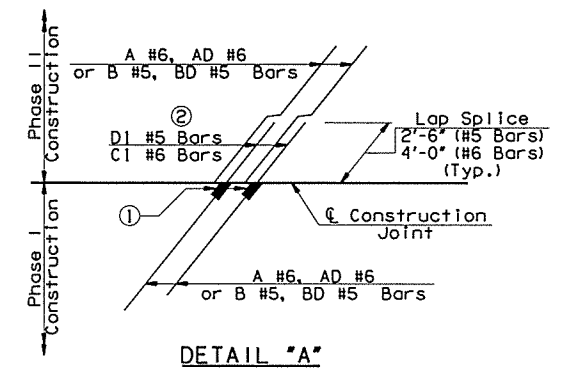
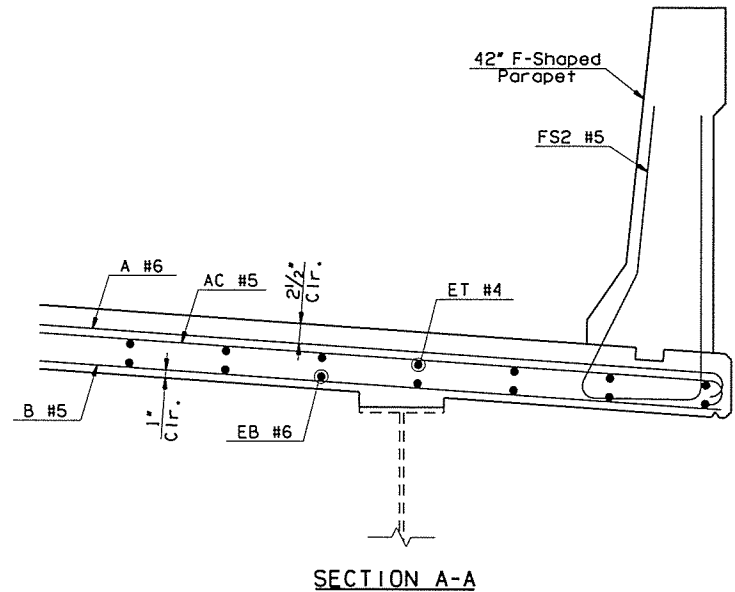
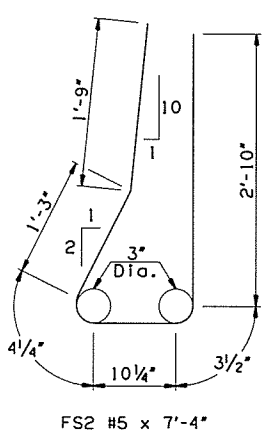
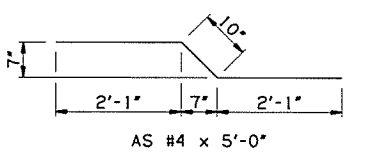
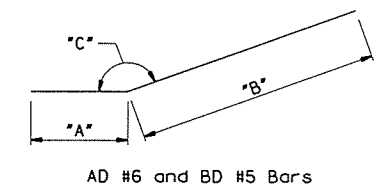
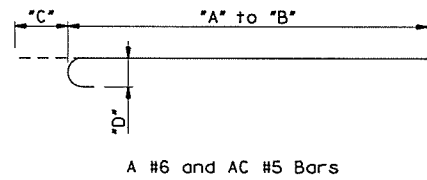
MARK	SIZE	NO.	FORM	"A"	"B"	"C"	"D"	LENGTH	LENGTH VARIATION
EPOXY COATED REINFORCING STEEL									
A1	#6	236	BENT	19'-8"		8"	6"	20'-4"	-
A2	#6	22	BENT	10'-6"	19'-3"	8"	6"	15'-6 1/2" AVG.	11'-2" TO 19'-11"
A3	#6	45	BENT	1'-5"	10'-4"	8"	6"	6'-6 1/2" AVG.	2'-1" TO 11'-0"
A4	#6	40	STR.					9'-7 1/2" AVG.	1'-0" TO 18'-3"
A5	#6	20	BENT	10'-6"	19'-1"	8"	6"	15'-5 1/2" AVG.	11'-2" TO 19'-9"
A6	#6	41	BENT	1'-6"	10'-3"	8"	6"	6'-6 1/2" AVG.	2'-2" TO 10'-11"
A7	#6	34	STR.					9'-6 1/2" AVG.	1'-0" TO 18'-1"
A8	#6	17	BENT	10'-7"	19'-0"	8"	6"	15'-5 1/2" AVG.	11'-3" TO 19'-8"
A9	#6	35	BENT			8"	6"	6'-7 1/2" AVG.	2'-3" TO 11'-0"
A10	#6	31	STR.					9'-5" AVG.	1'-0" TO 17'-10"
AC	#5	292	BENT	10'-4"		7"	5"	10'-11"	-
AD1	#6	2	BENT	1'-1"	29'-4"	129°		30'-5"	-
AD2	#6	2	BENT	1'-6"	27'-6"	131°		29'-0"	-
AD3	#6	2	BENT	1'-2"	27'-11"	131°		29'-1"	-
AD4	#6	2	BENT	1'-6"	25'-5"	135°		26'-11"	-
AD5	#6	2	BENT	1'-2"	25'-9"	135°		26'-11"	-
AD6	#6	2	BENT	1'-5"	24'-7"	137°		26'-0"	-
AS	#5	42	BENT					5'-0"	-
B1	#5	236	STR.					19'-8"	-
B2	#5	44	STR.					10'-5 1/2" AVG.	1'-8" TO 19'-3"
B3	#5	40	STR.					9'-7 1/2" AVG.	1'-0" TO 18'-3"
B4	#5	40	STR.					10'-5" AVG.	1'-9" TO 19'-1"
B5	#5	34	STR.					9'-6 1/2" AVG.	1'-0" TO 18'-1"
B6	#5	34	STR.					10'-5" AVG.	1'-10" TO 19'-0"
B7	#5	31	STR.					9'-5" AVG.	1'-0" TO 17'-10"
BD1	#5	2	BENT	1'-1"	29'-4"	129°		30'-5"	-
BD2	#5	2	BENT	1'-6"	27'-6"	131°		29'-0"	-
BD3	#5	2	BENT	1'-2"	27'-11"	131°		29'-1"	-
BD4	#5	2	BENT	1'-6"	25'-5"	135°		26'-11"	-
BD5	#4	2	BENT	1'-2"	25'-9"	135°		26'-11"	-
BD6	#5	2	BENT	1'-5"	24'-7"	137°		26'-0"	-
EB1	#6	19	STR.					43'-11" AVG.	43'-5" TO 44'-5"
EB2	#6	2	STR.					44'-10"	-
EB3	#6	19	STR.					91'-1 1/2" AVG.	90'-5" TO 91'-10"
EB4	#6	2	STR.					92'-1"	-
EB5	#6	19	STR.					44'-2" AVG.	43'-10" TO 44'-6"
EB6	#6	2	STR.					44'-8"	-
ET1	#4	19	STR.					43'-11" AVG.	43'-5" TO 44'-5"
ET2	#4	2	STR.					44'-10"	-
ET3	#4	19	STR.					89'-7 1/2" AVG.	88'-11" TO 90'-4"
ET4	#4	2	STR.					90'-7"	-
ET5	#4	19	STR.					44'-2" AVG.	43'-10" TO 44'-6"
ET6	#4	2	STR.					44'-8"	-
FS2	#5	182	BENT					7'-4"	-

- ③ Includes One 4'-0" Lap Length.
- ④ Includes One 2'-6" Lap Length.

BAR LIST - SUPERSTRUCTURE PHASE II CONSTRUCTION

MARK	SIZE	NO.	FORM	"A"	"B"	"C"	"D"	LENGTH	LENGTH VARIATION
EPOXY COATED REINFORCING STEEL									
A1	#6	229	BENT	19'-8"		8"	6"	20'-4"	-
A11	#6	40	STR.					9'-8 1/2" AVG.	1'-3" TO 18'-2"
A12	#6	21	BENT	10'-6"	19'-4"	8"	6"	15'-7" AVG.	11'-2" TO 20'-0"
A13	#6	39	BENT	1'-6"	10'-3"	8"	6"	6'-6 1/2" AVG.	2'-2" TO 10'-11"
A14	#6	37	STR.					9'-7 1/2" AVG.	1'-2" TO 18'-1"
A15	#6	18	BENT	10'-4"	19'-2"	8"	6"	15'-5" AVG.	11'-0" TO 19'-10"
A16	#6	33	BENT	1'-7"	10'-1"	8"	6"	6'-6" AVG.	2'-3" TO 10'-9"
A17	#6	31	STR.					9'-7" AVG.	1'-5" TO 17'-9"
A18	#6	18	BENT	10'-4"	19'-7"	8"	6"	15'-7 1/2" AVG.	11'-0" TO 20'-3"
A19	#6	31	BENT	1'-8"	10'-0"	8"	6"	6'-6" AVG.	2'-4" TO 10'-8"
AC	#5	283	BENT	10'-4"		7"	5"	10'-11"	-
AD7	#6	2	BENT	1'-6"	28'-2"	131°		29'-8"	-
AD8	#6	2	BENT	1'-2"	27'-5"	133°		28'-7"	-
AD9	#6	2	BENT	1'-6"	26'-11"	133°		28'-5"	-
AD10	#6	2	BENT	1'-2"	25'-5"	137°		26'-7"	-
AD11	#6	2	BENT	1'-6"	25'-0"	137°		26'-6"	-
AD12	#6	2	BENT	1'-3"	24'-6"	139°		25'-9"	-
AS	#4	42	BENT					5'-0"	-
B1	#5	229	STR.					19'-8"	-
B8	#5	40	STR.					9'-8 1/2" AVG.	1'-3" TO 18'-2"
B9	#5	40	STR.					10'-6 1/2" AVG.	1'-9" TO 19'-4"
B10	#5	37	STR.					9'-7 1/2" AVG.	1'-2" TO 18'-1"
B11	#5	34	STR.					10'-6" AVG.	1'-10" TO 19'-2"
B12	#5	31	STR.					9'-7" AVG.	1'-5" TO 17'-9"
B13	#5	33	STR.					10'-9 1/2" AVG.	1'-11" TO 19'-8"
BD7	#5	2	BENT	1'-6"	28'-2"	131°		29'-8"	-
BD8	#5	2	BENT	1'-2"	27'-5"	133°		28'-7"	-
BD9	#5	2	BENT	1'-6"	26'-11"	133°		28'-5"	-
BD10	#5	2	BENT	1'-2"	25'-5"	137°		26'-7"	-
BD11	#5	2	BENT	1'-6"	25'-0"	137°		26'-6"	-
BD12	#5	2	BENT	1'-3"	24'-6"	139°		25'-9"	-
C1	#6	324	STR.					4'-0"	-
D1	#5	327	STR.					2'-6"	-
EB7	#6	19	STR.					43'-0 1/2" AVG.	42'-8" TO 43'-5"
EB8	#6	2	STR.					42'-10"	-
EB9	#6	19	STR.					89'-8 1/2" AVG.	89'-1" TO 90'-4"
EB10	#6	2	STR.					89'-3"	-
EB11	#6	19	STR.					43'-7 1/2" AVG.	43'-4" TO 43'-11"
EB12	#6	2	STR.					43'-6"	-
ET7	#4	19	STR.					43'-0 1/2" AVG.	42'-8" TO 43'-5"
ET8	#4	2	STR.					42'-10"	-
ET9	#4	19	STR.					88'-2 1/2" AVG.	87'-7" TO 88'-10"
ET10	#4	2	STR.					87'-9"	-
ET11	#4	19	STR.					43'-7 1/2" AVG.	43'-4" TO 43'-11"
ET12	#4	2	STR.					43'-6"	-
FS2	#5	179	BENT					7'-4"	-

- ③
- ④



- ① Install Mechanical Reinforcing Bar Coupler (Epoxy Coated) in accordance with Section S11.04.C.3. Installation shall follow the Manufacturer's recommendations. Couplers shall be attached to:
A #6, AD #6, B #5, and BD #5 Bars in Phase I Const.
- ② Splice A #6, AD #6, B #5 and BD #5 Bars in Phase II Const. with C1 #6 or D1 #5 Bars.
Lap C1 #6 or D1 #5 Bars with A #6, AD #6, B #5 and BD #5 Bars in Phase II Const.

1-44 OVER I-244 NB TULSA COUNTY DESIGN JTR 4/15
 BRIDGE "A" DETAIL SJL 5/16
 SUPERSTRUCTURE DETAILS (SHEET 5 OF 7) CHECK BRT 5/16
 GARVER
 STATE OF OKLAHOMA DEPARTMENT OF TRANSPORTATION JOB PIECE NO. 29775(04) SHEET NO. 33
 7/7/2016 TULSA COUNTY