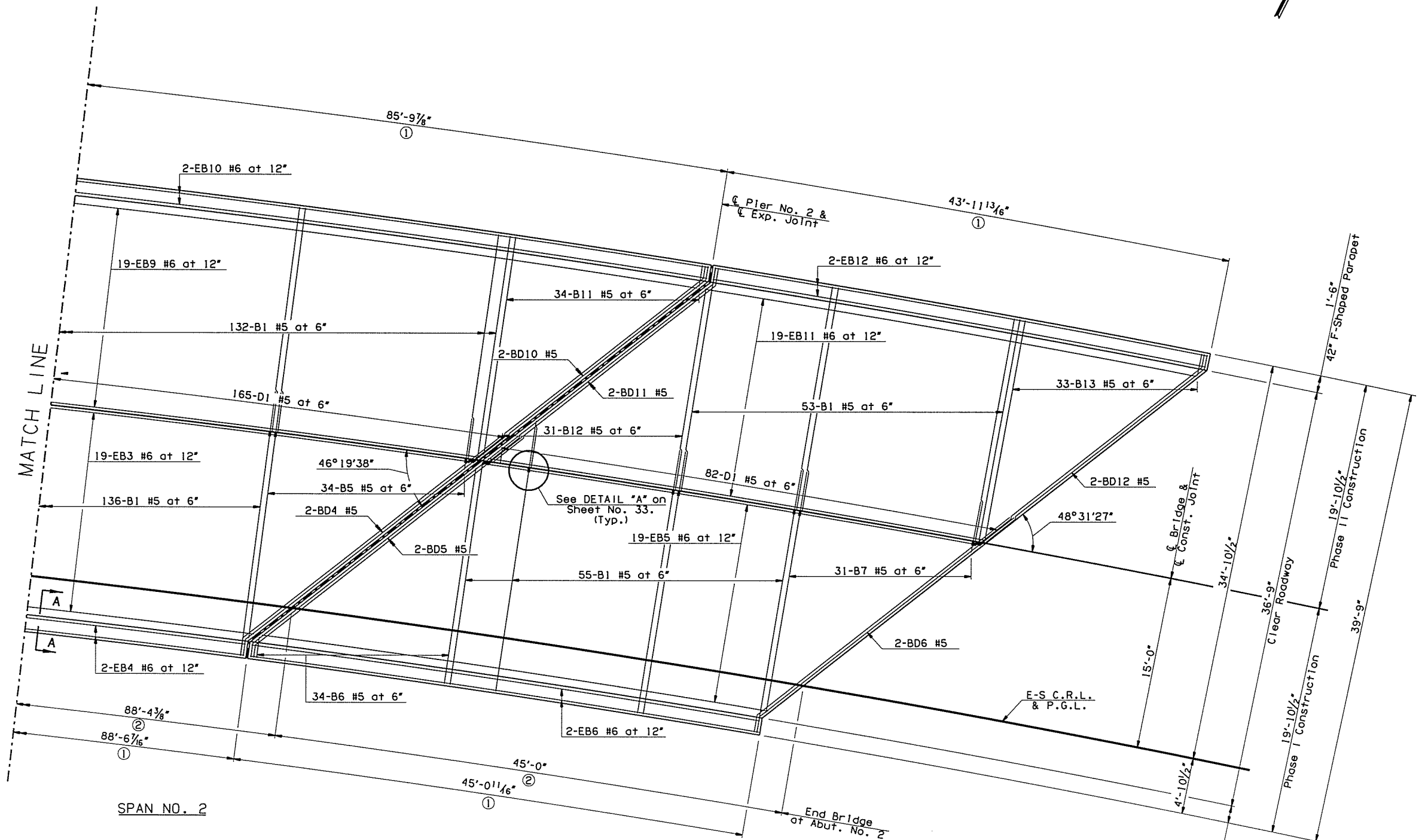


- ① Measured Along Outside Edge of Slab
- ② Measured along C.R.L.

OKLAHOMA DEPARTMENT OF TRANSPORTATION						
FED. ROAD DIST. NO.	STATE	JOB PIECE NO.	FISCAL YEAR	SHEET NO.	TOTAL SHEETS	
6	OKLA.	29775(04)				
DESCRIPTION			REVISIONS		DATE	



**NOTES:**

For remaining Span Nos. 1 & 2 Bottom of Slab Reinforcing Plan, see Sheet No. 31.

For Span Nos. 1-3 Top Reinforcing Slab Plan, see Sheet Nos. 29 & 30.

See Sheet No. 28 for details and Expansion Joint Opening Equation.

All transverse reinforcement shall be placed along radial lines to C.R.L. and are measured along edge of slab.

All longitudinal reinforcement shall be oriented along a curve concentric with C.R.L.

42" F-Shaped Parapet reinforcement not shown for clarity. See Std. FSHP-42-2-00E and Sheet No. 35 for details.

Rotate hooks on A and AC Bars to maintain minimum clearance.

All lap lengths shall be staggered.

For bar lists, bar bends and SECTION A-A, see Sheet No. 33.

**SLAB PLAN**  
(Showing Bottom Mat of Reinforcing)

I-44 OVER I-244 NB BRIDGE "A"		TULSA COUNTY	DESIGN	JTR	4/15
			DETAIL	SJL	5/16
			CHECK	BRT	5/16
			<b>GARVER</b>		
STATE OF OKLAHOMA	DEPARTMENT OF TRANSPORTATION				
JOB PIECE NO. 29775(04)		SHEET NO. 32			