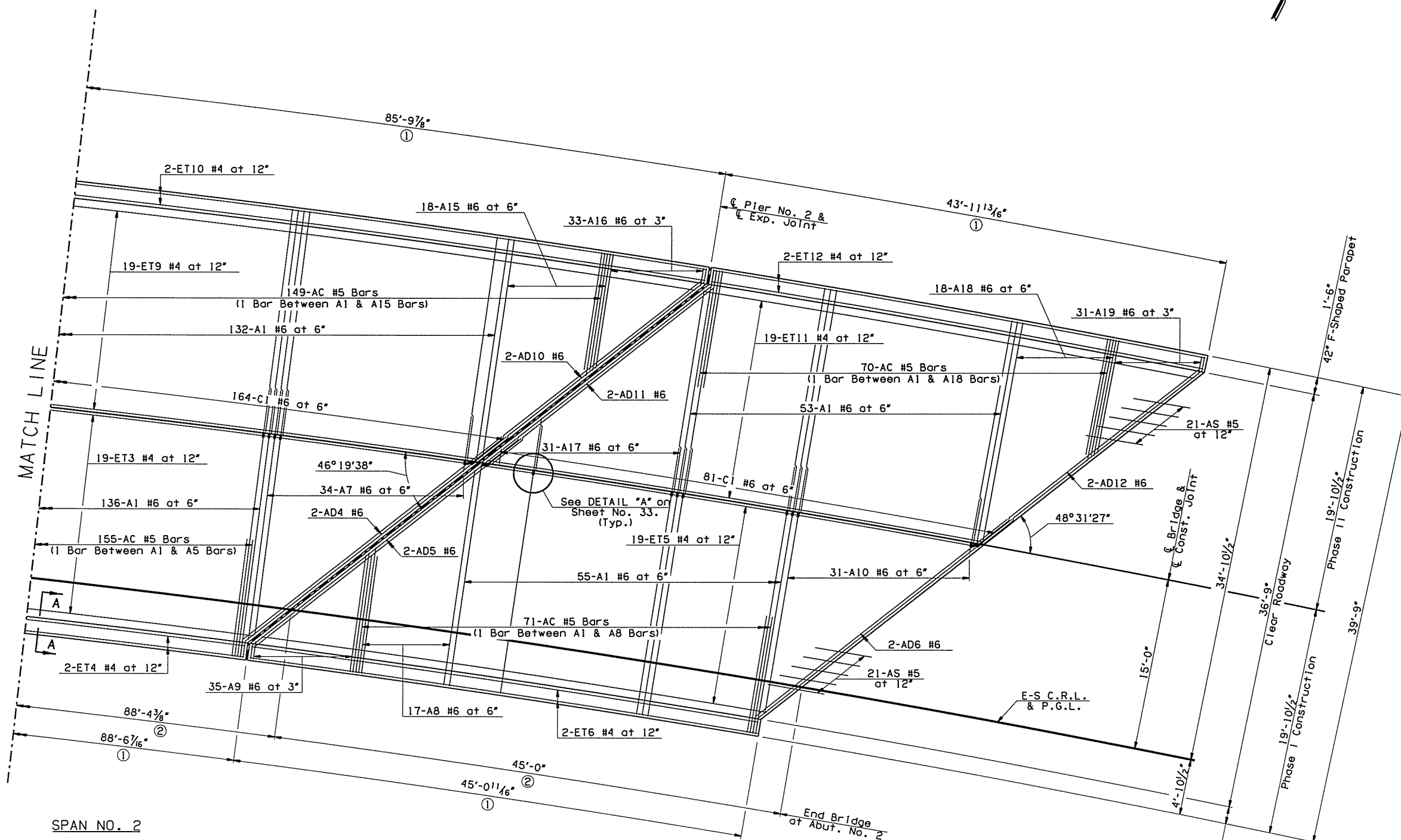


- ① Measured Along Outside Edge of Slab
- ② Measured along C.R.L.

OKLAHOMA DEPARTMENT OF TRANSPORTATION					
FED. ROAD DIST. NO.	STATE	JOB PIECE NO.	FISCAL YEAR	SHEET NO.	TOTAL SHEETS
6	OKLA.	2977504			
DESCRIPTION				REVISIONS	DATE



**NOTES:**

For remaining Span Nos. 1 & 2 Top of Slab Reinforcing Plan, see Sheet No. 29.

For Span Nos. 1-3 Bottom Reinforcing Slab Plan, see Sheet Nos. 31 & 32.

See Sheet No. 28 for details and Expansion Joint Opening Equation.

All transverse reinforcement shall be placed along radial lines to C.R.L. and are measured along edge of slab.

All longitudinal reinforcement shall be oriented along a curve concentric with C.R.L.

42" F-Shaped Parapet reinforcement not shown for clarity. See Std. FSHP-42-2-00E and Sheet No. 35 for details.

Rotate hooks on A and AC Bars to maintain minimum clearance.

All lap lengths shall be staggered.

For bar lists, bar bends and SECTION A-A, see Sheet No. 33.

SPAN NO. 2

SPAN NO. 3

**SLAB PLAN**  
(Showing Top Mat of Reinforcing)

I-44 OVER I-244 NB		TULSA COUNTY		DESIGN	JTR	4/15
BRIDGE "A"				DETAIL	SJL	5/16
SUPERSTRUCTURE DETAILS (SHEET 2 OF 7)				CHECK	BRT	5/16
				<b>GARVER</b>		
STATE OF OKLAHOMA	DEPARTMENT OF TRANSPORTATION			JOB PIECE NO. 29775(04) SHEET NO. 30		