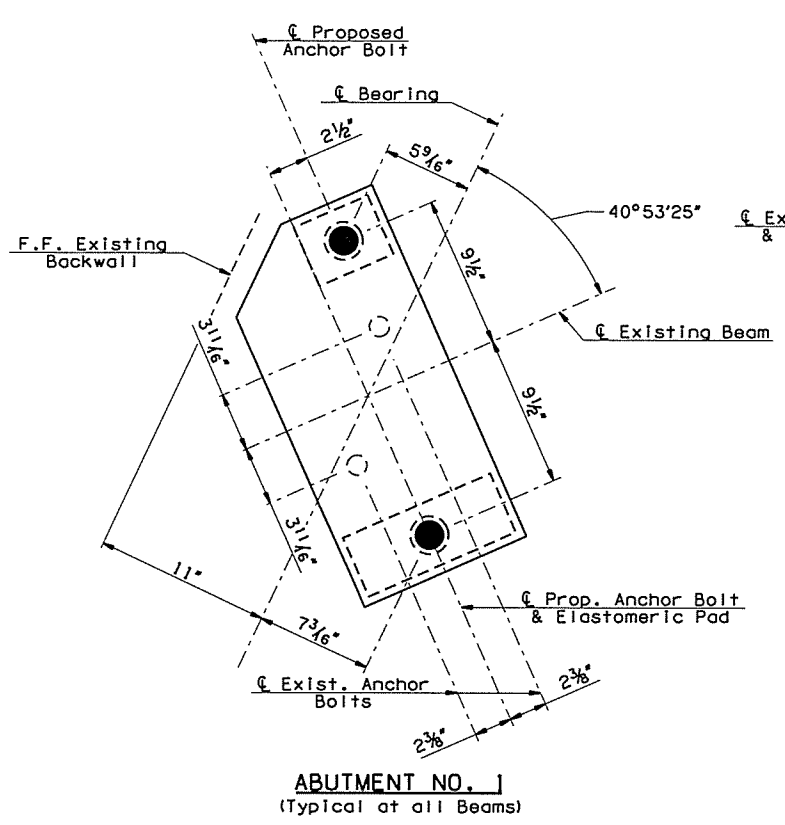
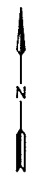
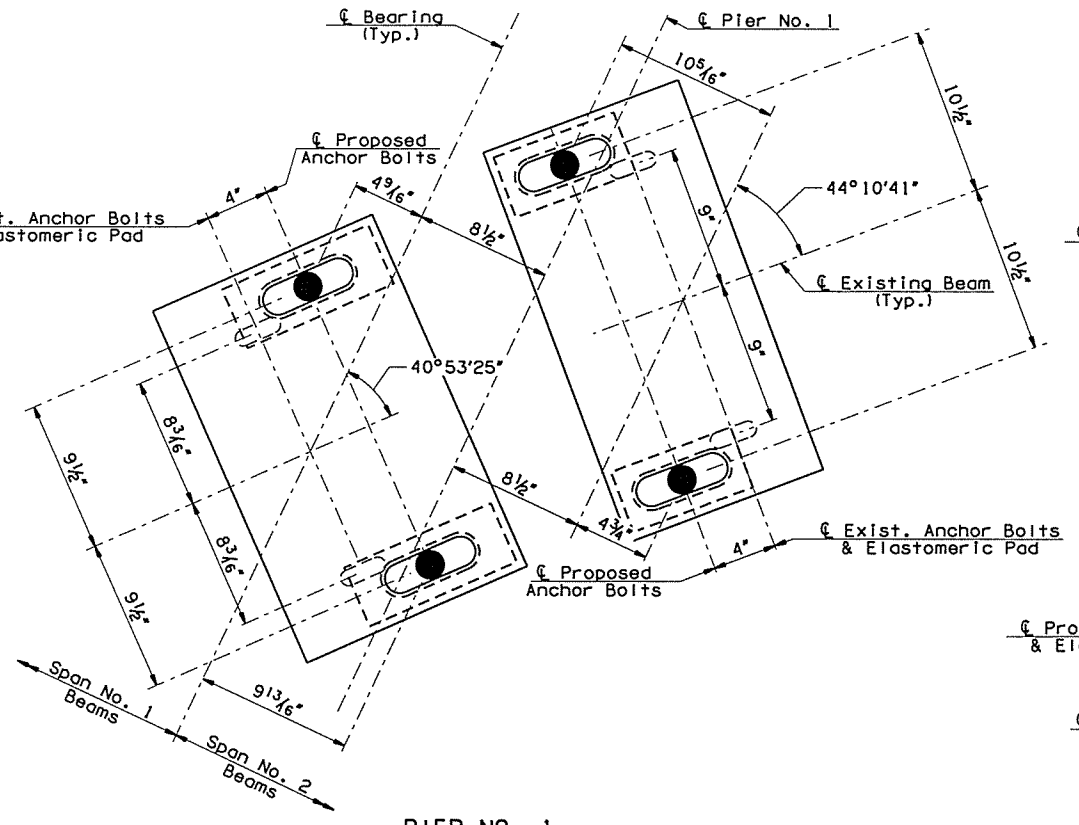


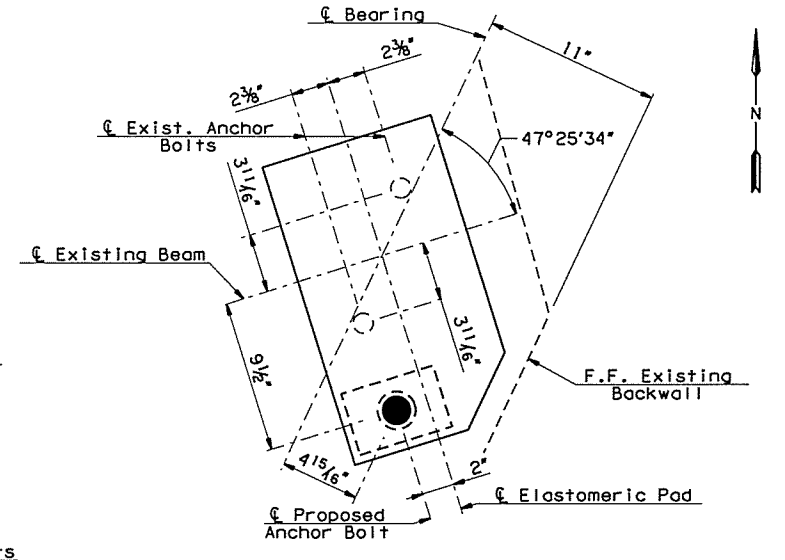
OKLAHOMA DEPARTMENT OF TRANSPORTATION					
FED. ROAD DIST. NO.	STATE	JOB PIECE NO.	FISCAL YEAR	SHEET NO.	TOTAL SHEETS
6	OKLA.	29775(04)			
DESCRIPTION			REVISIONS		DATE



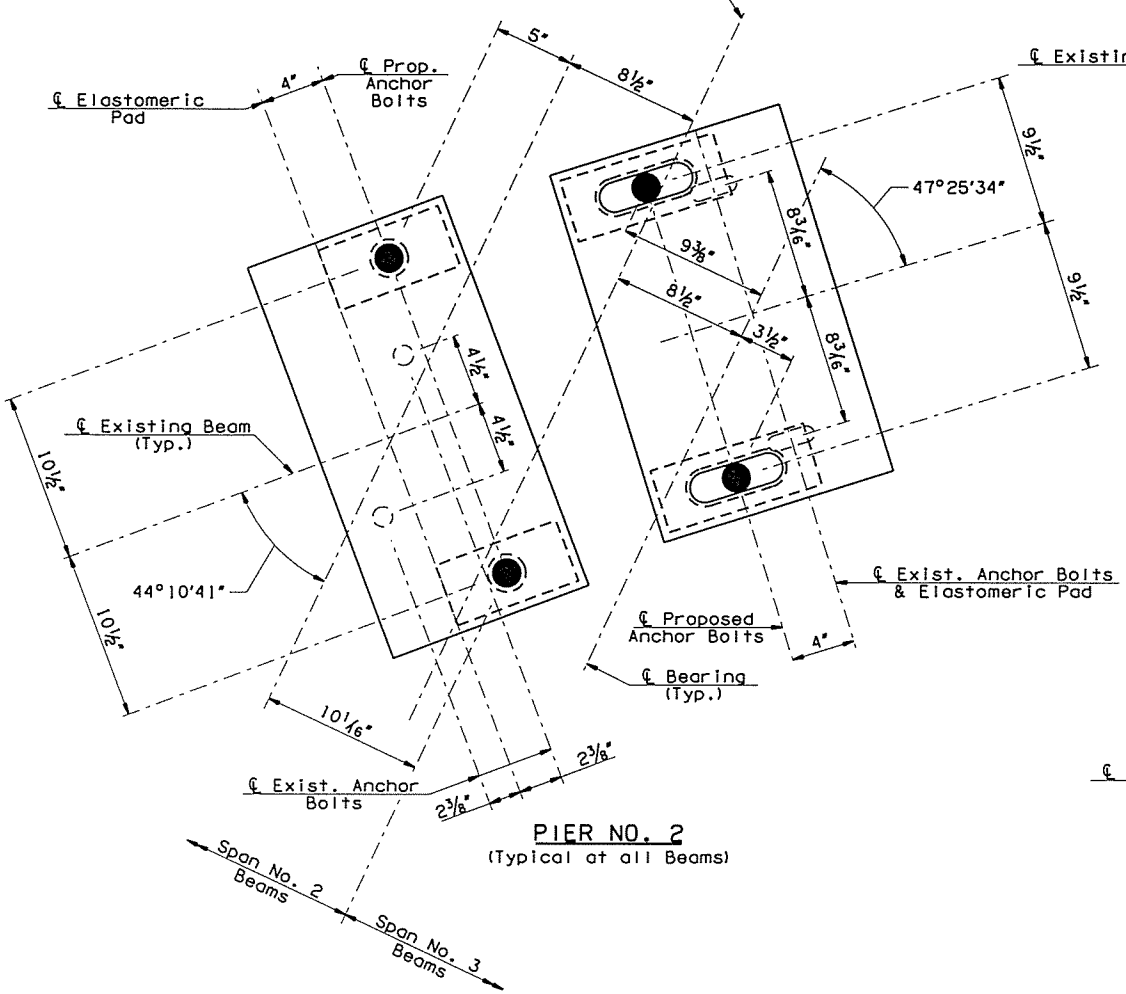
ABUTMENT NO. 1
(Typical at all Beams)



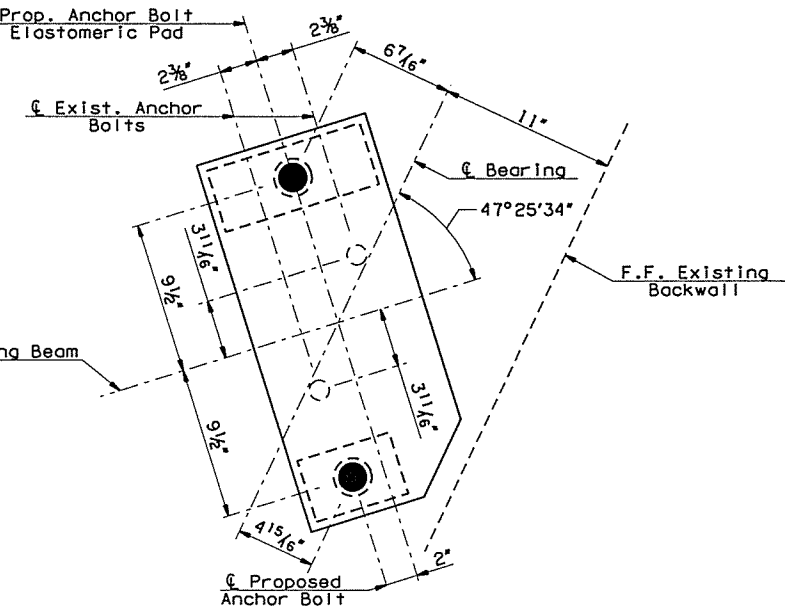
PIER NO. 1
(Typical at all Beams)



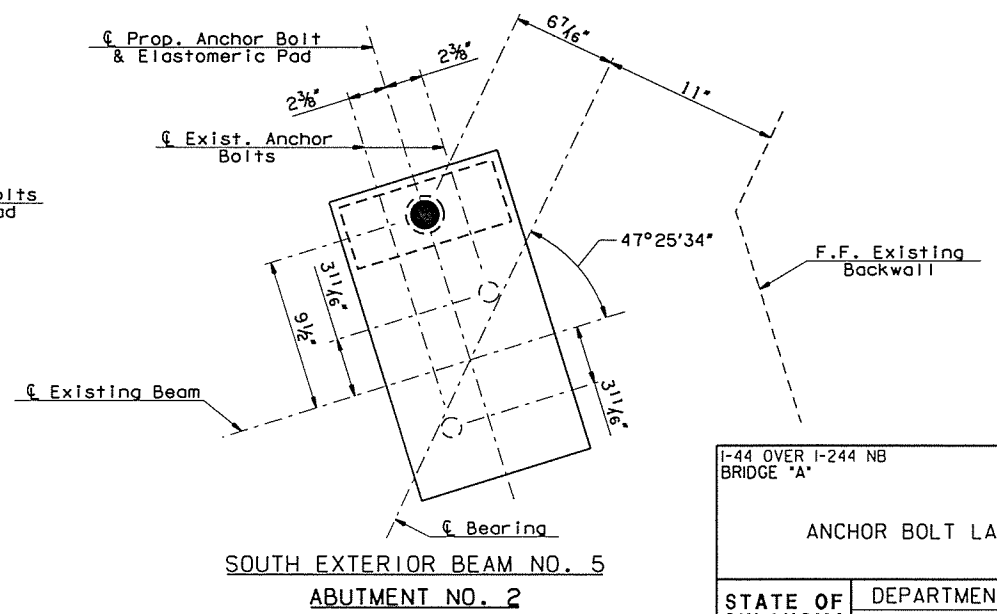
NORTH EXTERIOR BEAM NO. 1



PIER NO. 2
(Typical at all Beams)



INTERIOR BEAM NOS. 2 - 4



SOUTH EXTERIOR BEAM NO. 5
ABUTMENT NO. 2

I-44 OVER I-244 NB BRIDGE "A"		TULSA COUNTY	DESIGN	JTR	4/15
			DETAIL	SJL	5/16
			CHECK	BRT	5/16
			GARVER		
STATE OF OKLAHOMA	DEPARTMENT OF TRANSPORTATION				
JOB PIECE NO. 29775(04)		SHEET NO. 26			