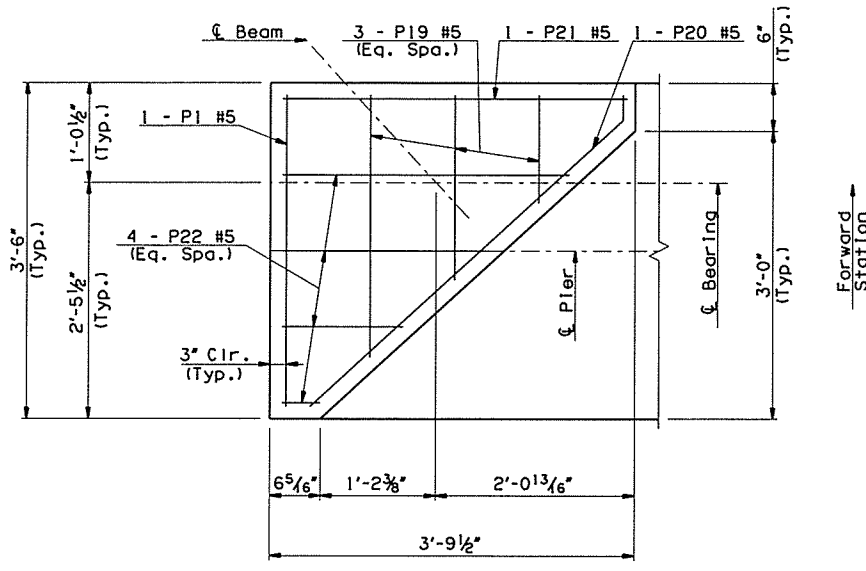
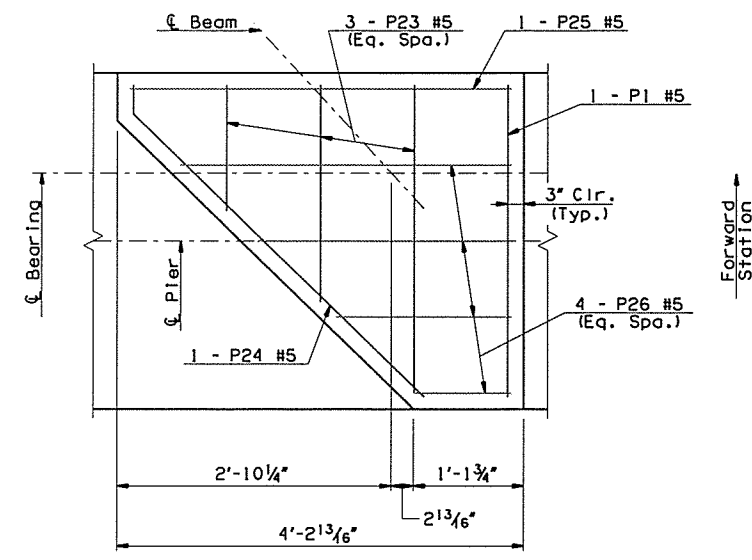


All information included in these plans is based on the existing As-Surveyed data. It is solely the Contractor's responsibility to accurately verify this information prior to any demolition or construction. For additional information, see the General Notes "VERIFICATION OF EXISTING CONDITIONS", "SURVEYING AND CONSTRUCTION STAKING", & "ESTABLISHMENT OF VERTICAL GEOMETRY" on Sheet No. 3.

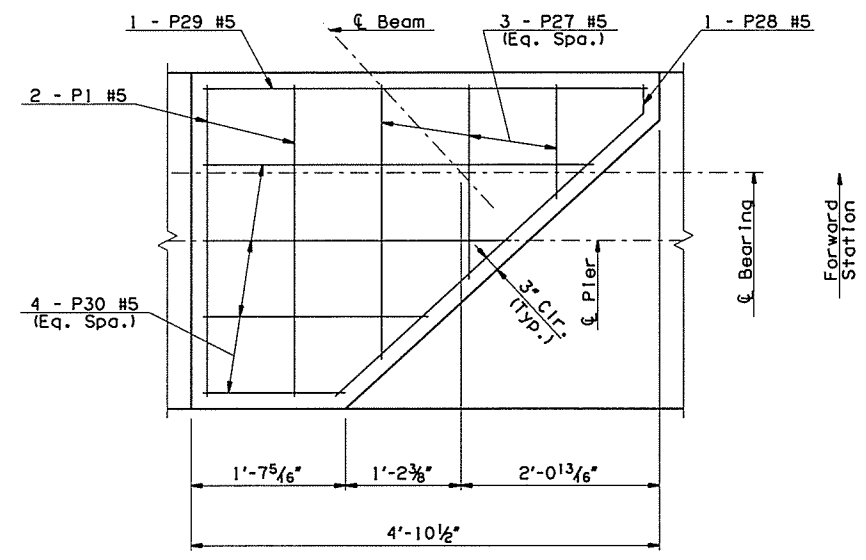
OKLAHOMA DEPARTMENT OF TRANSPORTATION					
FED. ROAD DIST. NO.	STATE	JOB PIECE NO.	FISCAL YEAR	SHEET NO.	TOTAL SHEETS
6	OKLA.	29775(04)			
DESCRIPTION			REVISIONS	DATE	



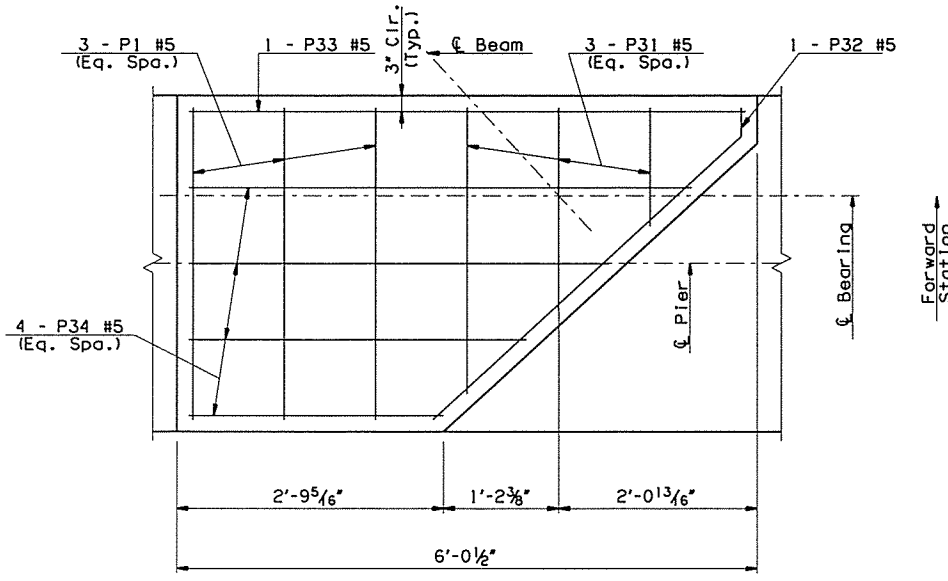
3-A



3-B & 3-D



3-C



3-E

PEDESTAL LAYOUT - PIER NO. 2

NOTES:
See Sheet No. 25 for bar lists, bar bends, and Summary of Quantities.
Adjust spacing of pedestal reinforcing around proposed step & cap reinforcing.

1-44 OVER I-244 NB BRIDGE "A"	TULSA COUNTY	DESIGN	JGS	5/16
		DETAIL	JGS	5/16
		CHECK	BRT	5/16
GARVER				

STATE OF OKLAHOMA	DEPARTMENT OF TRANSPORTATION
JOB PIECE NO. 29775(04)	SHEET NO. 23