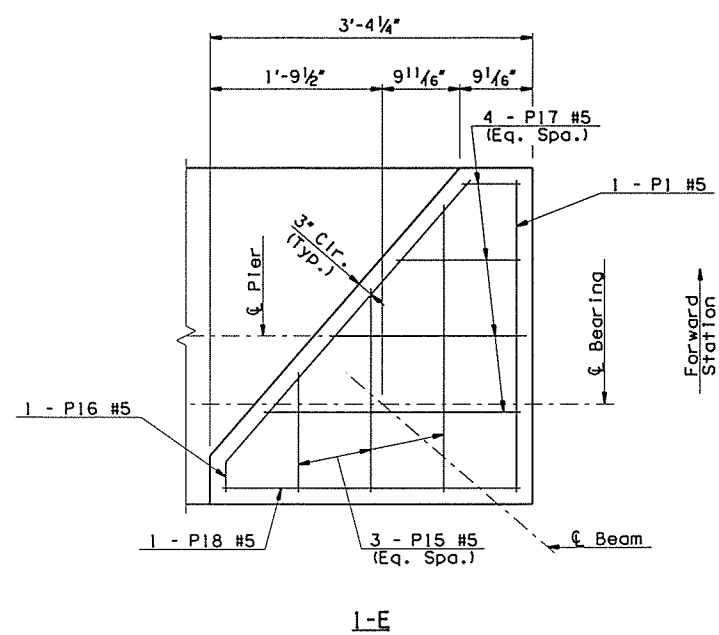
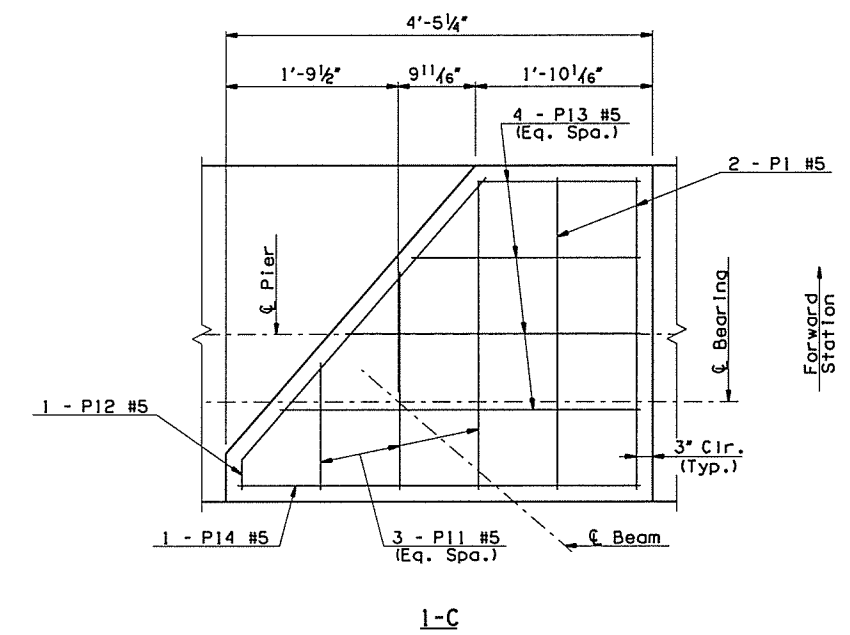
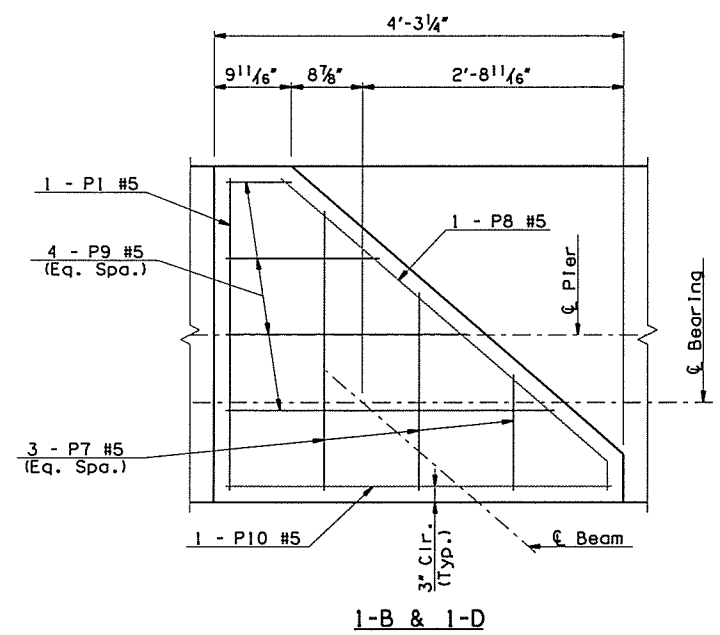
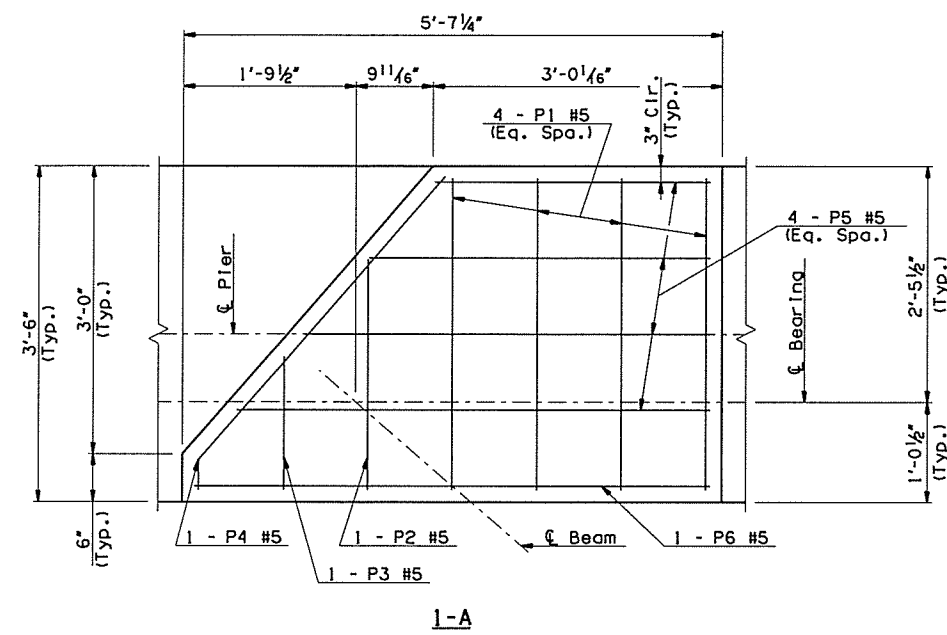


All information included in these plans is based on the existing As-Surveyed data. It is solely the Contractor's responsibility to accurately verify this information prior to any demolition or construction. For additional information, see the General Notes "VERIFICATION OF EXISTING CONDITIONS", "SURVEYING AND CONSTRUCTION STAKING", & ESTABLISHMENT OF VERTICAL GEOMETRY" on Sheet No. 3.

OKLAHOMA DEPARTMENT OF TRANSPORTATION						
FED. ROAD DIST. NO.	STATE	JOB PIECE NO.	FISCAL YEAR	SHEET NO.	TOTAL SHEETS	
6	OKLA.	29775(04)				
DESCRIPTION				REVISIONS	DATE	



PEDESTAL LAYOUT - PIER NO. 1

NOTES:  
 See Sheet No. 25 for bar lists, bar bends, and Summary of Quantities.  
 Adjust spacing of pedestal reinforcing around proposed step & cap reinforcing.

I-44 OVER I-244 NB BRIDGE 'A'	TULSA COUNTY	DESIGN	JGS	5/16
		DETAIL	JGS	5/16
		CHECK	BRT	5/16
PIER DETAILS (SHEET 4 OF 7)			<b>GARVER</b>	
STATE OF OKLAHOMA	DEPARTMENT OF TRANSPORTATION			
	JOB PIECE NO. 29775(04)	SHEET NO. 22		