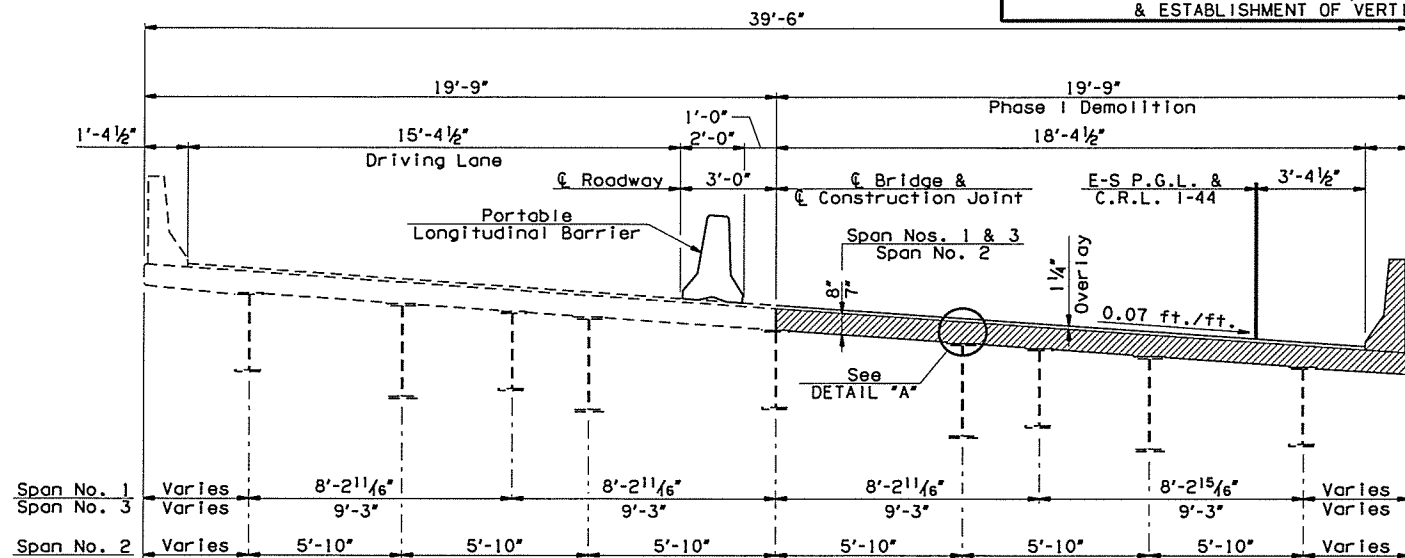
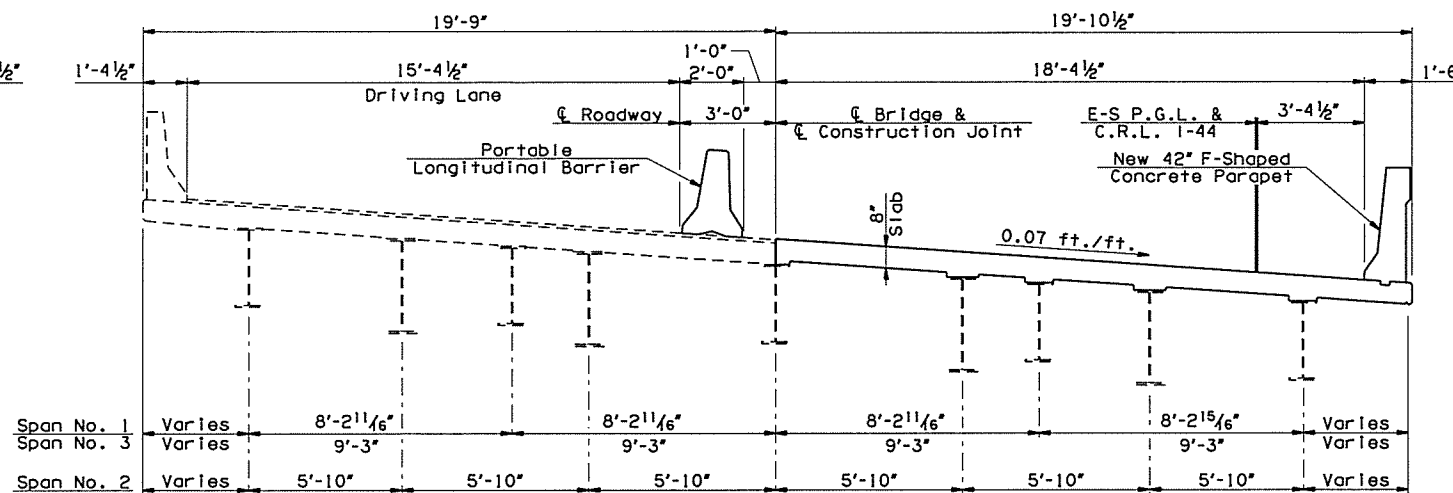


All information included in these plans is based on the existing As-Surveyed data. It is solely the Contractor's responsibility to accurately verify this information prior to any demolition or construction. For additional information, see the General Notes "VERIFICATION OF EXISTING CONDITIONS", "SURVEYING AND CONSTRUCTION STAKING", & ESTABLISHMENT OF VERTICAL GEOMETRY" on Sheet No. 3.

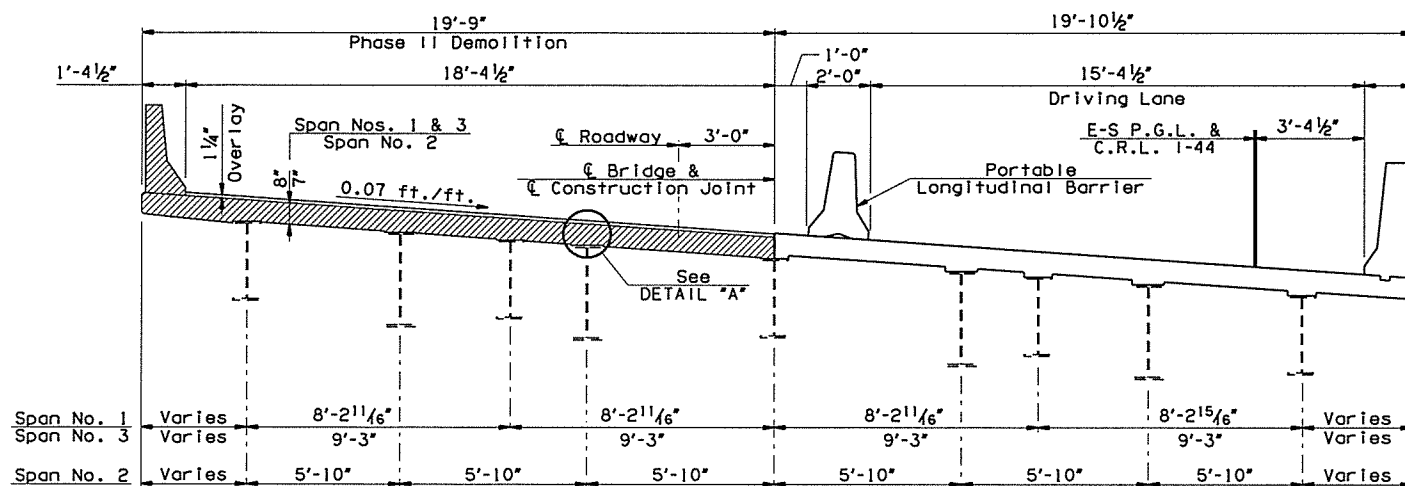
OKLAHOMA DEPARTMENT OF TRANSPORTATION						
FED. ROAD DIST. NO.	STATE	JOB PIECE NO.	FISCAL YEAR	SHEET NO.	TOTAL SHEETS	
6	OKLA.	29775(04)				
DESCRIPTION		REVISIONS		DATE		



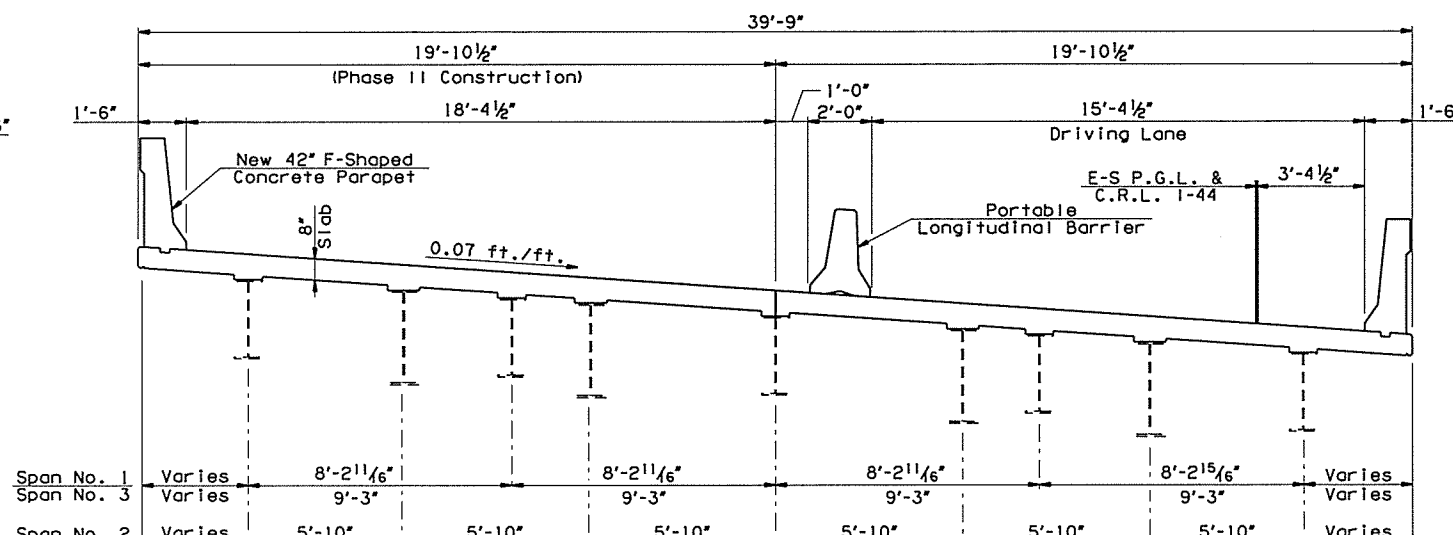
TYPICAL SECTION - PHASE I DEMOLITION



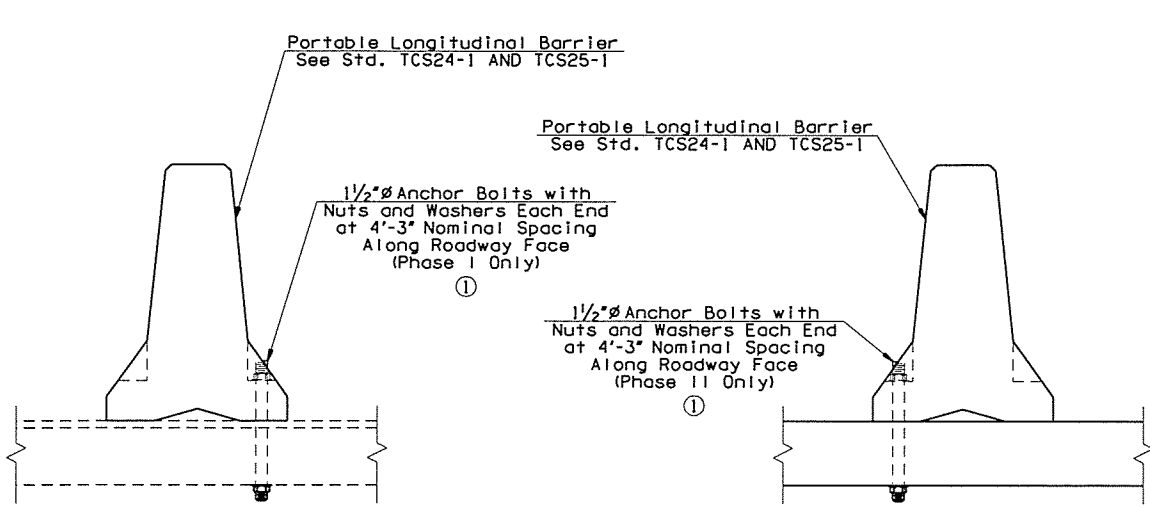
TYPICAL SECTION - PHASE I CONSTRUCTION



TYPICAL SECTION - PHASE II DEMOLITION

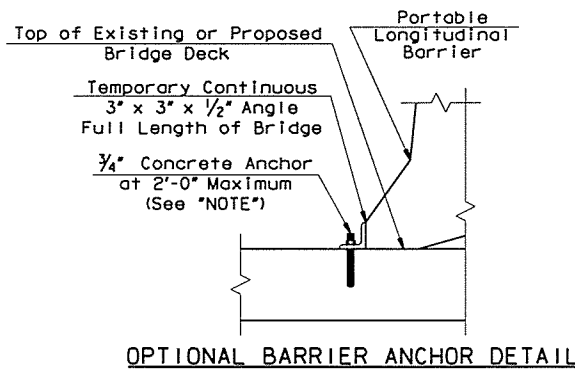


TYPICAL SECTION - PHASE II CONSTRUCTION



PORTABLE LONGITUDINAL BARRIER DETAIL (Showing Anchorage into existing Deck)

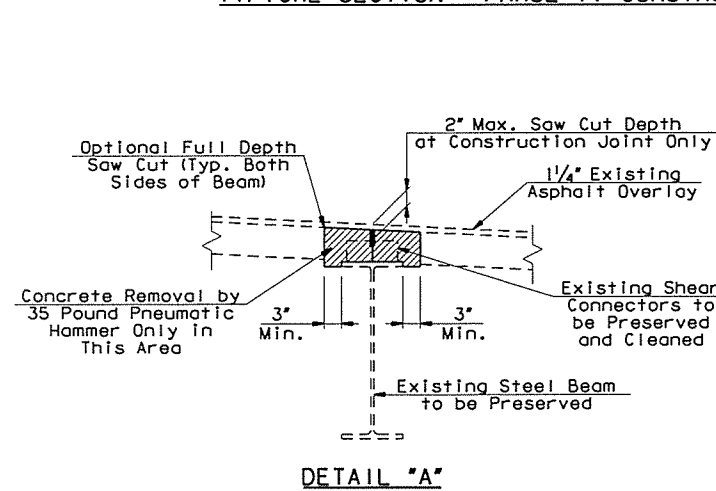
PORTABLE LONGITUDINAL BARRIER DETAIL (Showing Anchorage into proposed Deck)



NOTE:

The Contractor shall submit the type of Concrete Anchor to the Bridge Engineer for approval prior to installation of Anchors. Anchors shall have a Minimum Ultimate Pullout Capacity of 10,000 lbs. and a Minimum Ultimate Shear Capacity of 13,000 lbs.

When the Temporary Angle is removed from the new concrete deck, the remaining holes shall be filled in a manner approved by the Engineer. All costs of Angles, 3/4" Dia. Concrete Anchors with Washers, shall be paid for in Other Items of Work.



NOTES:

Detail is shown for beam location at Longitudinal Construction Joint. Typical at all locations where saw cutting occurs over beams.

Concrete removal over beams shall be restricted to 35 Pound Pneumatic Hammer. The concrete removal in this area shall be performed after the slab has been cut.

Provide Anchor Bolts having a minimum yield strength of 55 K.S.I. and a minimum tensile strength of 75 K.S.I. Submit the type of Anchor Bolt to the Engineer for approval prior to installation. Fill the remaining holes in the new Deck Slab after removing Anchors in a manner approved by the Engineer. Include all costs for the Anchor Bolts, hole repair, labor, and incidentals necessary in the contract unit price of "PORTABLE LONGITUDINAL BARRIER" per roadway plans.

LEGEND

- Existing Structure
- Existing Structure Demolition
- Proposed Structure
- Portable Longitudinal Barrier

I-44 OVER I-244 NB BRIDGE "A"		TULSA COUNTY		DESIGN	JTR	4/15
				DETAIL	JTR	4/15
				CHECK	BRT	4/15
				GARVER		
STATE OF OKLAHOMA		DEPARTMENT OF TRANSPORTATION				
		JOB PIECE NO. 29775(04)		SHEET NO. 14		