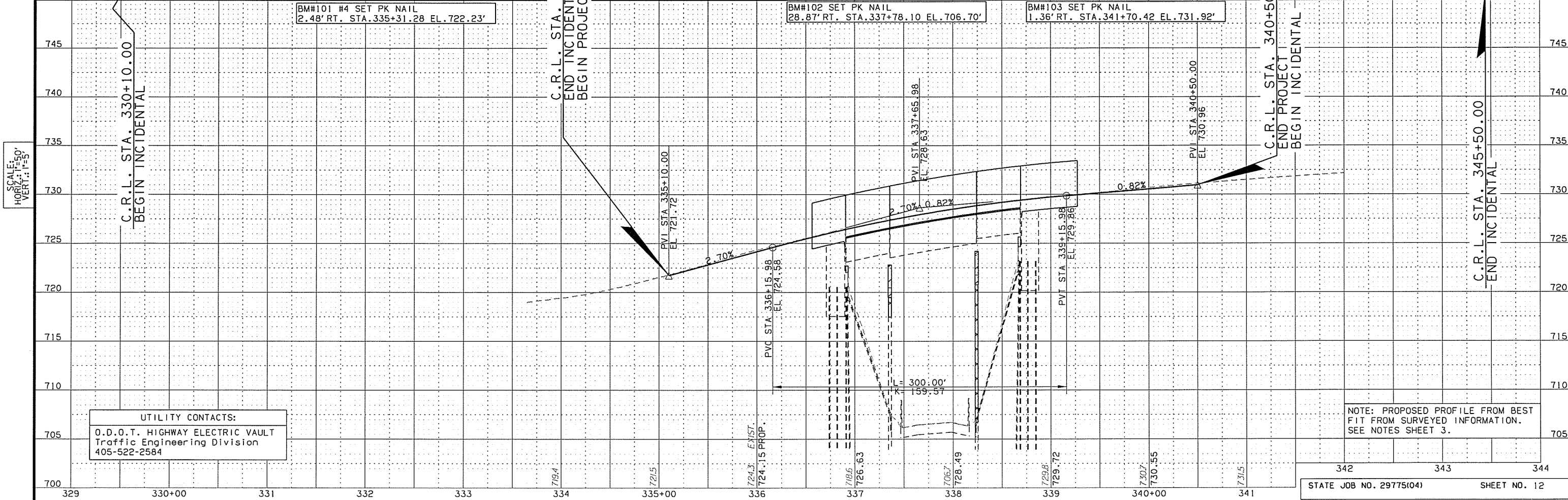
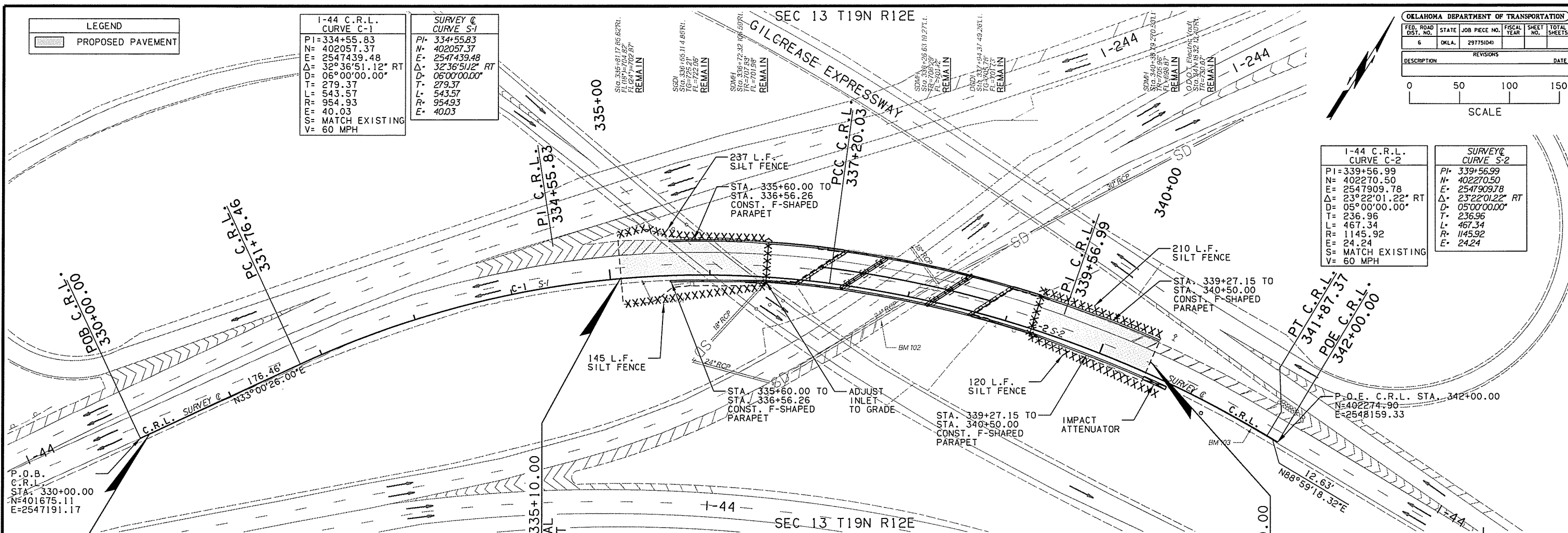
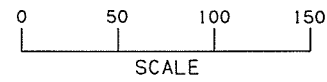


LEGEND	
	PROPOSED PAVEMENT

I-44 C.R.L. CURVE C-1	
PI=334+55.83	
N=402057.37	
E=2547439.48	
Δ=32°36'51.12" RT	
D=06°00'00.00"	
T=279.37	
L=543.57	
R=954.93	
E=40.03	
S= MATCH EXISTING	
V= 60 MPH	

SURVEY @ CURVE S-1	
PI= 334+55.83	
N= 402057.37	
E= 2547439.48	
Δ= 32°36'51.12" RT	
D= 06°00'00.00"	
T= 279.37	
L= 543.57	
R= 954.93	
E= 40.03	

OKLAHOMA DEPARTMENT OF TRANSPORTATION					
FED. ROAD DIST. NO.	STATE	JOB PIECE NO.	FISCAL YEAR	SHEET NO.	TOTAL SHEETS
6	OKLA.	29775(04)		12	
DESCRIPTION			REVISIONS		DATE



UTILITY CONTACTS:  
O.D.O.T. HIGHWAY ELECTRIC VAULT  
Traffic Engineering Division  
405-522-2584

NOTE: PROPOSED PROFILE FROM BEST FIT FROM SURVEYED INFORMATION. SEE NOTES SHEET 3.

342	343	344
STATE JOB NO. 29775(04)		SHEET NO. 12