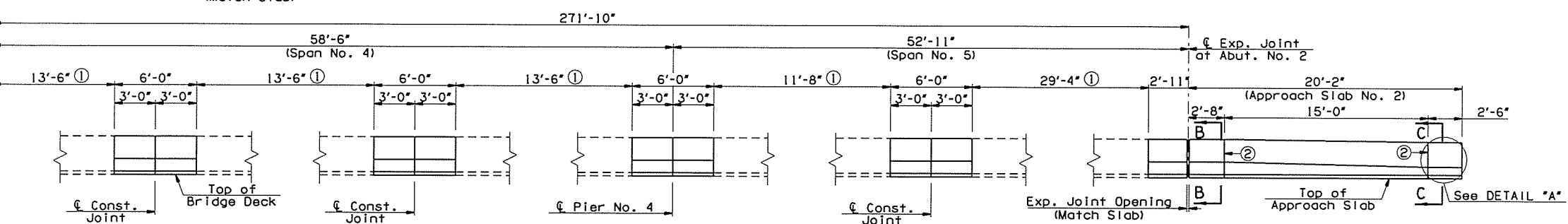
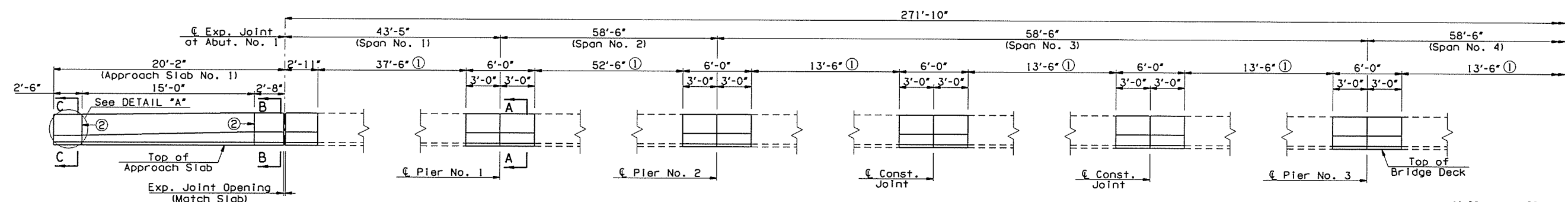
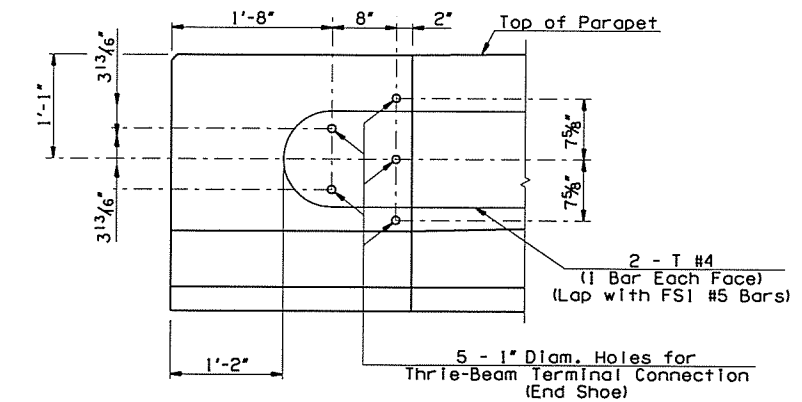


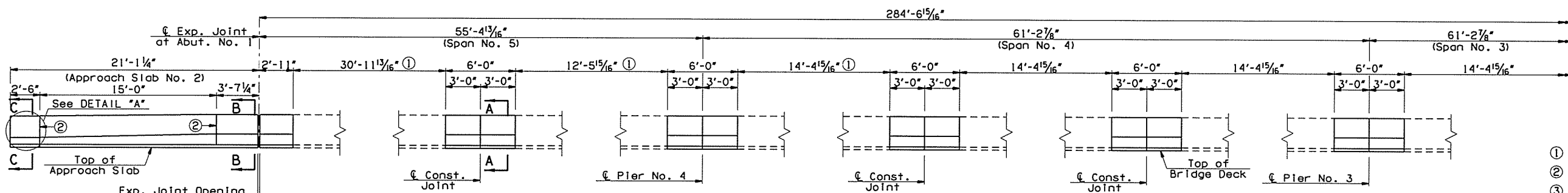
OKLAHOMA DEPARTMENT OF TRANSPORTATION						
FED. ROAD DIST. NO.	STATE	JOB PIECE NO.	FISCAL YEAR	SHEET NO.	TOTAL SHEETS	DATE
6	OKLA.	29773(04)				
DESCRIPTION						REVISIONS
						DATE



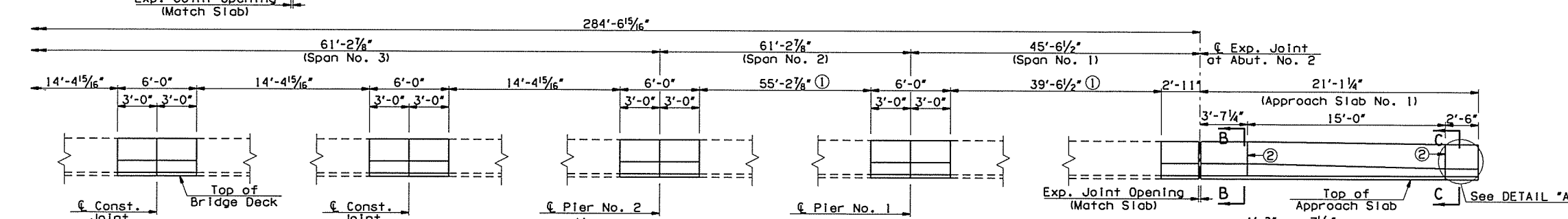
ELEVATION - SOUTH PARAPET
(Looking at inside face of Parapet)



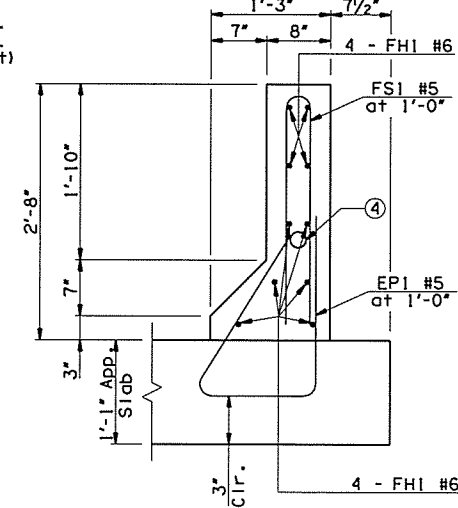
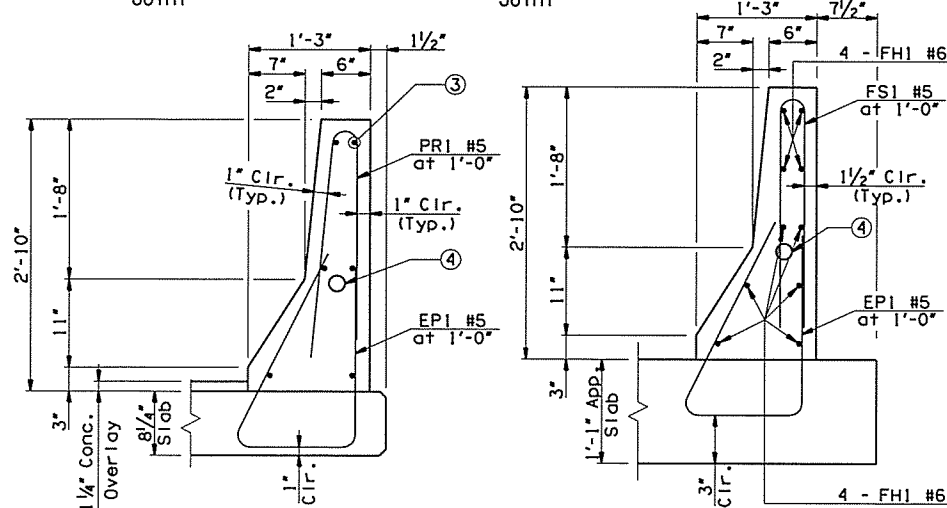
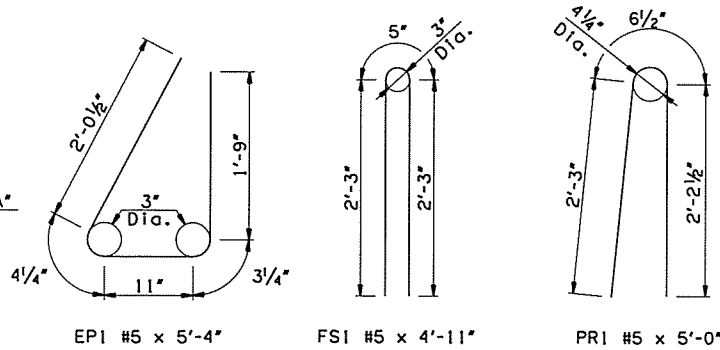
DETAIL "A"



- ① Existing Parapet to Remain.
- ② Crack Control Joints
- ③ Existing Reinforcing to be cleaned and preserved.
- ④ Existing 2"Ø Conduit to Remain (South Parapet Only)



ELEVATION - NORTH PARAPET
(Looking at inside face of Parapet)



NOTES:
Dimensions measured along roadway face of Parapet.

For further information about the Joint replacement, see Sheet Nos. 17 & 18.

Field Bend EPI Bars to maintain clear distances.

GILCREASE EXPRESSWAY RAMP OVER COUNTY ROAD & BNSF RR BRIDGE "A"		TULSA COUNTY	DESIGN	JTR	4/16
			DETAIL	SJL	4/16
			CHECK	BRT	5/16
SUPERSTRUCTURE DETAILS (SHEET 4 OF 4)					
GARVER					