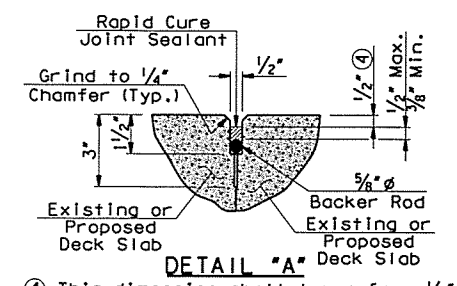
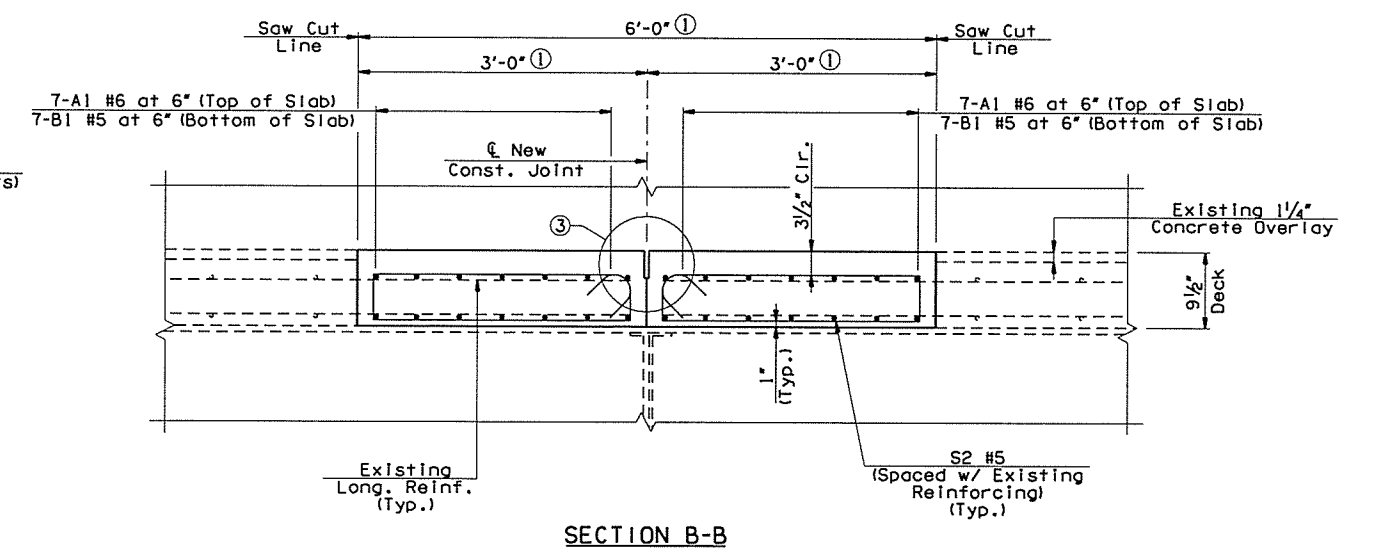
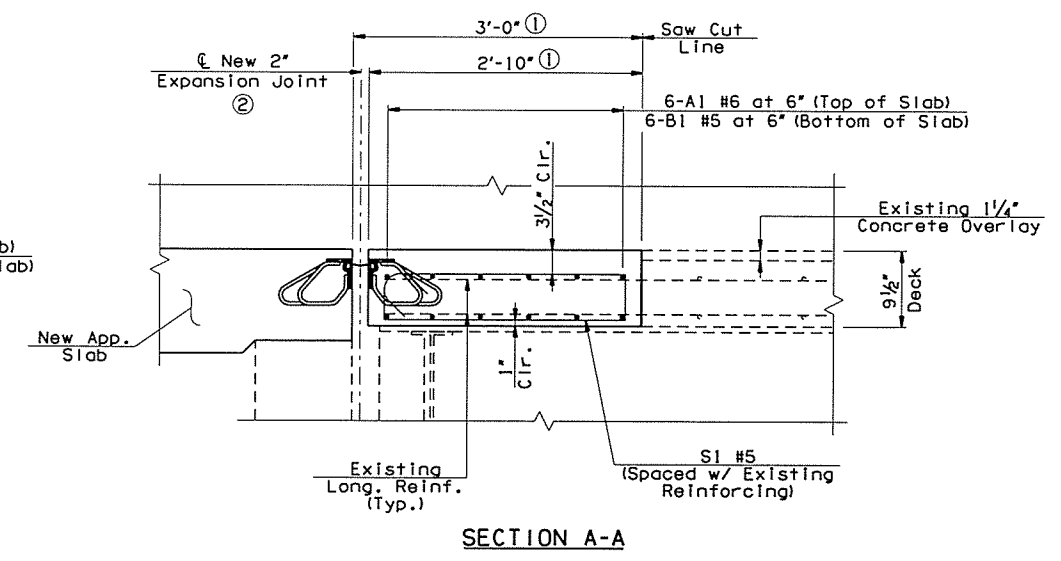
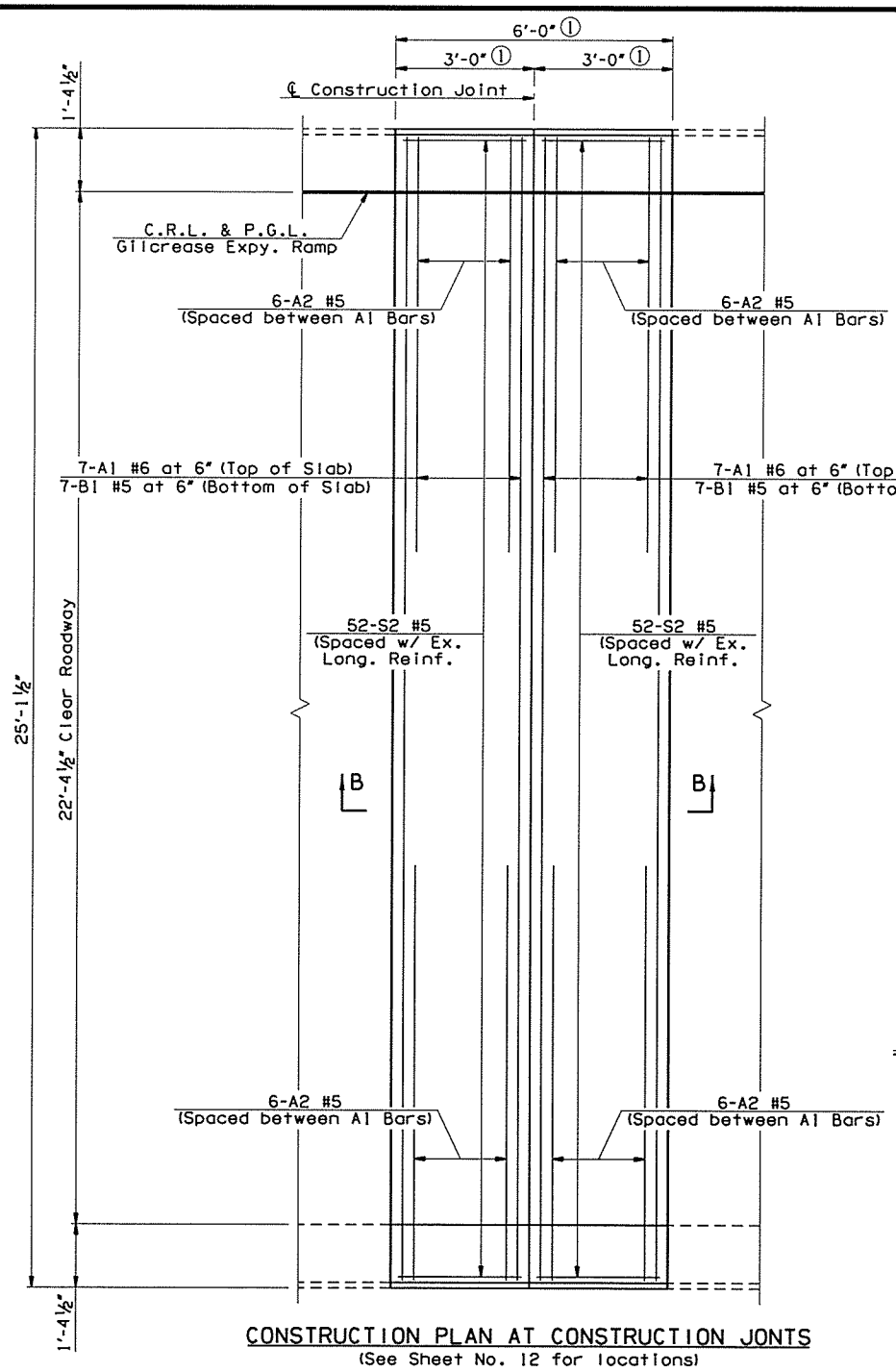
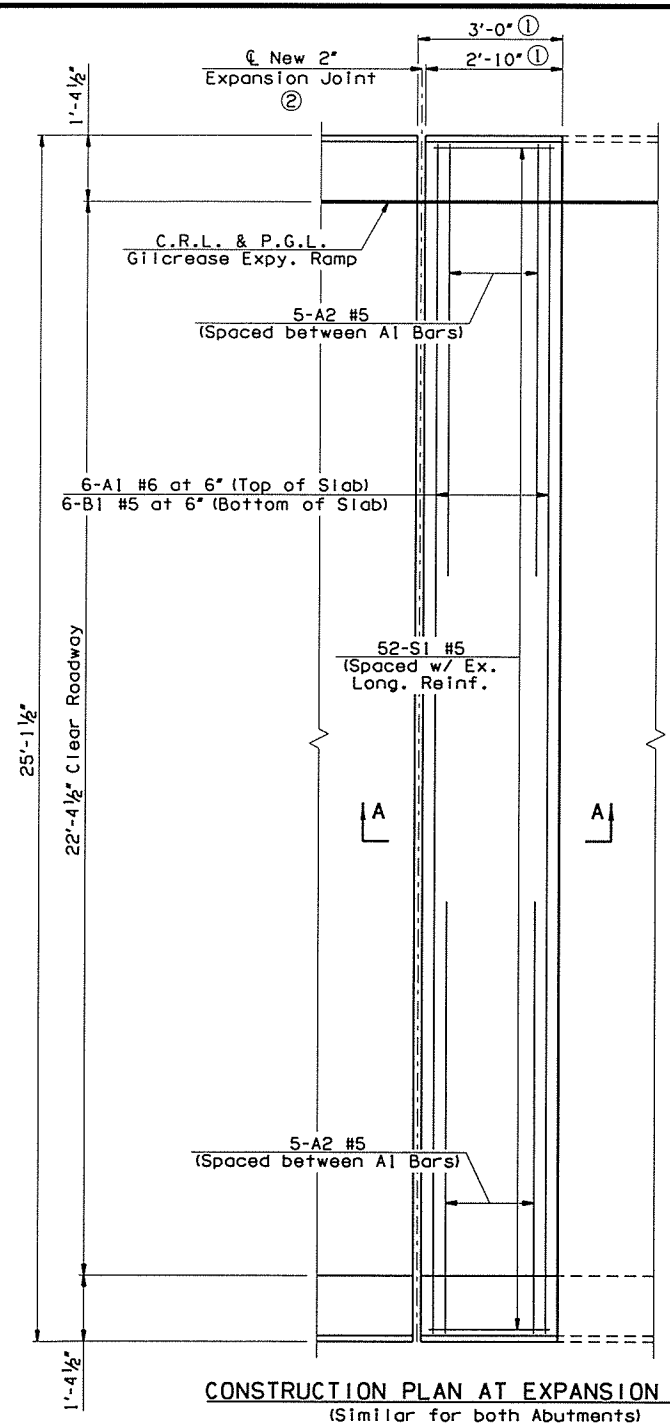


OKLAHOMA DEPARTMENT OF TRANSPORTATION						
FED. ROAD DIST. NO.	STATE	JOB PIECE NO.	FISCAL YEAR	SHEET NO.	TOTAL SHEETS	DATE
6	OKLA.	29773(04)				
DESCRIPTION						REVISIONS
						DATE



NOTES:

See Sheet No. 17 for details of demolition of the Expansion and Construction Joints.

See Sheet No. 19 for bar lists, bar bends, Flood Coat detail, and summary of quantities.

All costs associated with removing the existing concrete deck and replacement with Class AA concrete for Sealed Expansion Joint and Sawed and Sealed Construction Joint repairs including cleaning, straightening, and preserving existing reinforcing steel, saw cutting, materials, labor, and any incidentals necessary to complete the work as shown in the plans shall be included in the price bid per Square Yard of "CLASS C BRIDGE DECK REPAIR".

High Early Strength (HES) Concrete shall be used for deck/joint repairs. Deck repairs shall obtain a minimum compressive strength of 3,000 p.s.i. prior to placement of loads on repaired areas. Payment of HES Concrete is included in the price bid per Square Yard of "CLASS C BRIDGE DECK REPAIR".

All costs associated with the installation of Sealed Expansion Joints at Abutment Nos. 1 & 2 shall be included in the price bid per Linear Foot of "SEALED EXPANSION JOINT".

All costs associated with the installation of Sawed and Sealed Construction Joint at Pier Nos. 1-4 shall be included in the price bid per Linear Foot of "RAPID CURE JOINT SEALANT".

All costs associated with sealing Deck Slab Construction Joints within the spans shall be included in the price bid per Linear Foot of "SEALER CRACK PREPARATION" & per Gallon of "SEALER RESIN".

① Dimensions shown perpendicular to joint.

② The Expansion joint Openings shall be set at the time the Deck Slab Concrete is poured. The width of the opening, calculated in inches, shall be as follows:

At Abutment No. 1 : Opening = 2.6143 - (0.01024 x T)
 At Abutment No. 2 : Opening = 2.6587 - (0.01098 x T)

Where *T* equals the ambient air temperature in Degrees Fahrenheit at the time the Deck Slab Concrete is poured. (10°F < T < 120°F)

Note that the Expansion Joint Opening shall be measured perpendicular to the centerline of the joint.

③ New Sawed and Sealed Construction Joint at Pier Nos. 1-4 only. See DETAIL "A".

④ This dimension shall taper from 1/2" at edge of driving lane/shoulder to 1/8" at rail for Transverse Joints only.

GILCREASE EXPRESSWAY RAMP OVER COUNTY ROAD & BNSF RR BRIDGE "A"		DESIGN	JGS	4/16
SUPERSTRUCTURE DETAILS (SHEET 2 OF 4)		DETAIL	SJL	4/16
		CHECK	BRT	5/16
		GARVER		

STATE OF OKLAHOMA	DEPARTMENT OF TRANSPORTATION
JOB PIECE NO. 29773(04)	SHEET NO. 18