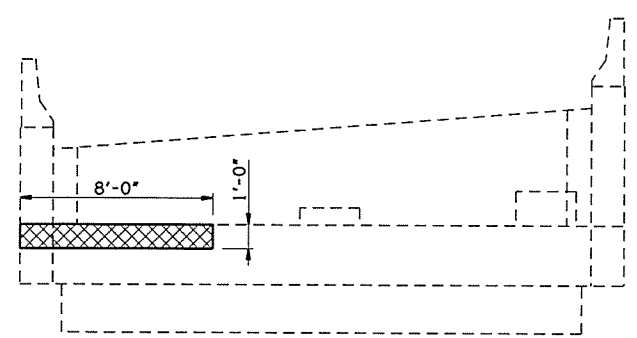
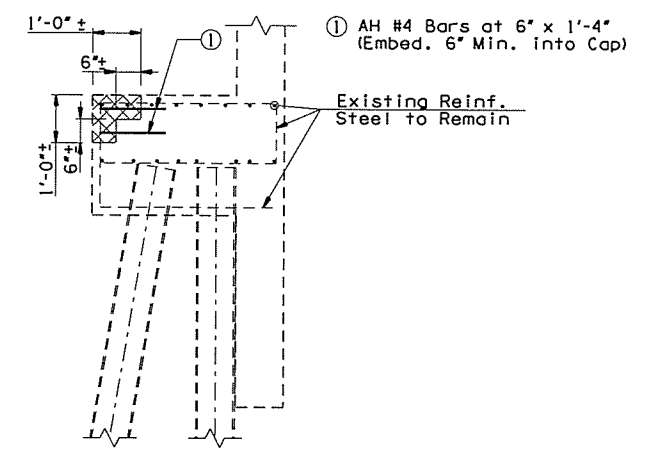


**ELEVATION**  
(Looking Back Station)

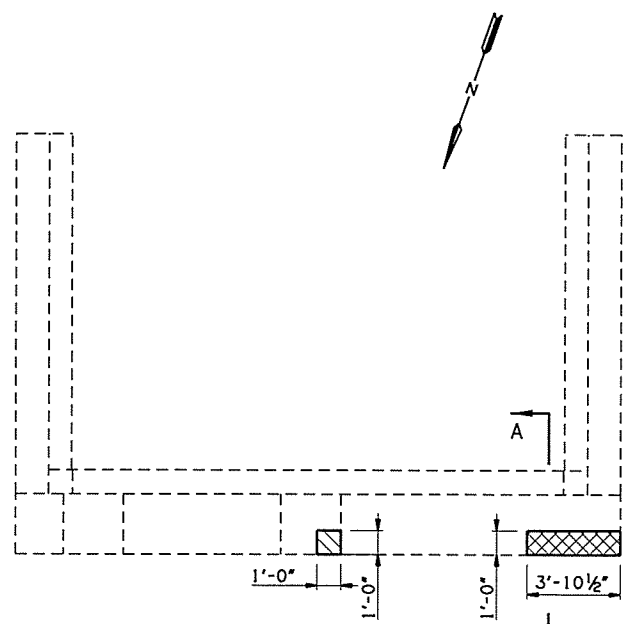


**ELEVATION**  
(Looking Forward Station)

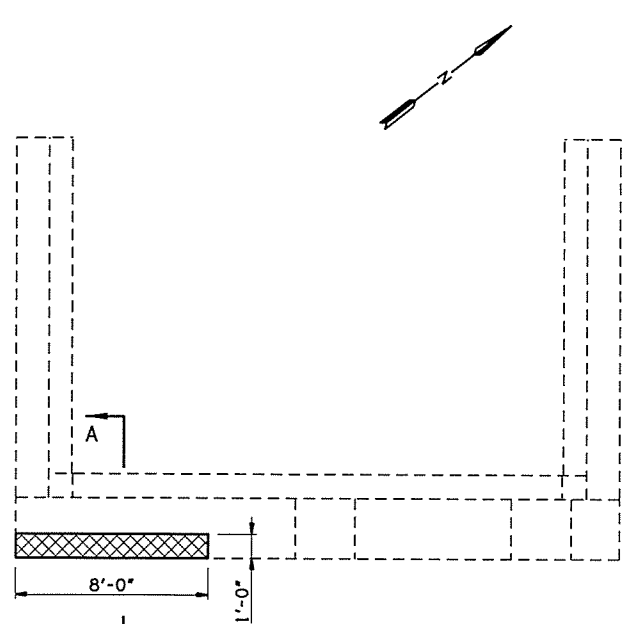


**SECTION A-A**

**NOTES:**  
All costs for the AH #4 bars including labor, materials, drilling, and incidentals necessary to complete the work shown in the plans shall be included in the price bid per Cubic Yard of "CLASS A CONCRETE".



**PLAN**  
**ABUTMENT NO. 1 REPAIR DETAILS**



**PLAN**  
**ABUTMENT NO. 2 REPAIR DETAILS**

SUMMARY OF QUANTITIES - ABUTMENT NO. 1		
ITEM	UNIT	TOTAL
SPECIAL CONCRETE FINISH	S.Y.	15.00
CLASS A CONCRETE	C.Y.	0.20
WATER REPELLENT (VISUALLY INSPECTED)	S.Y.	9.00
PREPARATION OF CRACKS, ABOVE WATER	L.F.	24.00
EPOXY RESIN, ABOVE WATER	GAL.	0.80
PNEUMATICALLY PLACED MORTAR	S.Y.	2.70
(PL) REPAIR BRIDGE ITEMS	S.Y.	1.40

SUMMARY OF QUANTITIES - ABUTMENT NO. 2		
ITEM	UNIT	TOTAL
SPECIAL CONCRETE FINISH	S.Y.	15.00
CLASS A CONCRETE	C.Y.	0.30
WATER REPELLENT (VISUALLY INSPECTED)	S.Y.	9.00
PREPARATION OF CRACKS, ABOVE WATER	L.F.	24.00
EPOXY RESIN, ABOVE WATER	GAL.	0.80
PNEUMATICALLY PLACED MORTAR	S.Y.	2.70
(PL) REPAIR BRIDGE ITEMS	S.Y.	1.40

- LEGEND**
- Pneumatically Placed Mortar
  - Class A Concrete
  - Existing Structure

GILCREASE EXPRESSWAY RAMP OVER COUNTY ROAD & BNSF RR BRIDGE "A"		DESIGN	JTR	4/16
ABUTMENT REPAIR DETAILS		DETAIL	SJL	4/16
		CHECK	BRT	5/16
		<b>GARVER</b>		
STATE OF OKLAHOMA	DEPARTMENT OF TRANSPORTATION			
	JOB PIECE NO. 29773(04)	SHEET NO.	14	