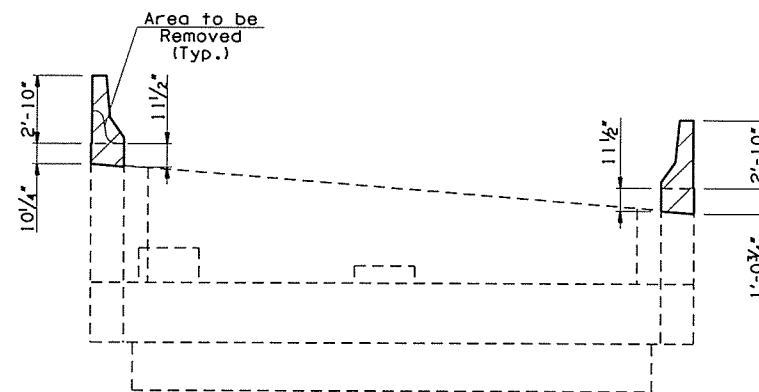


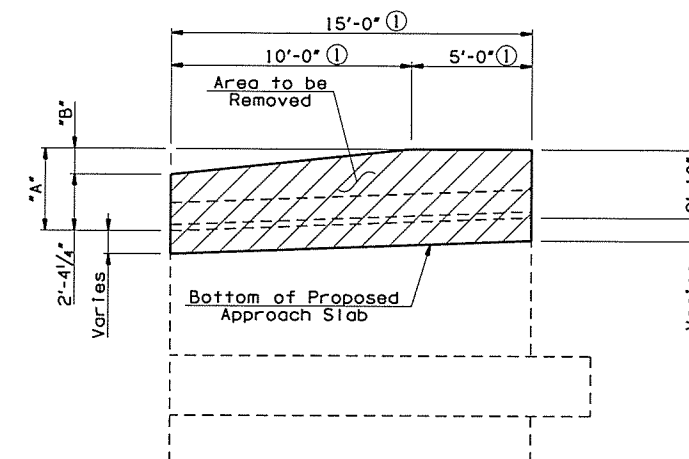
NOTE:

All incidental construction required for the removal of existing Wing/Back wall, including concrete removal, excavation, saw cutting, labor and equipment shall be included in the price bid per Lump Sum of "REMOVAL OF BRIDGE ITEMS".

All dimensions of the existing components shown on the plans are approximate. The Contractor shall verify all data necessary to remove portions of the existing abutments and shall be solely responsible for the accuracy thereof. See "VERIFICATION OF EXISTING CONDITIONS" requirements on Sheet No. 3.

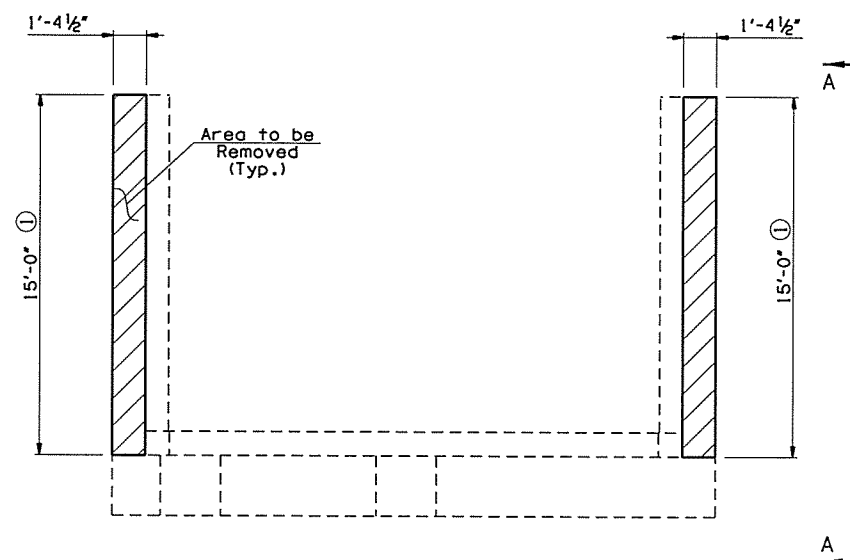


ELEVATION VIEW



SECTION A-A

① Dimension shown is along Inside Face of Wing.



PLAN VIEW
(Typical for both Abutments)

TABLE OF VARIABLES			
LOCATION		"A"	"B"
ABUTMENT NO. 1	N. WING	3'-5 7/8"	1'-0 7/8"
	S. WING	3'-5 7/16"	1'-1 7/16"
ABUTMENT NO. 2		2'-8 1/2"	4 1/4"

LEGEND

- Existing Structure Demolition
- Existing Structure

GILCREASE EXPRESSWAY RAMP OVER COUNTY ROAD & BNSF RR BRIDGE "A"		TULSA COUNTY	DESIGN	JTR	4/16
			DETAIL	SJL	4/16
			CHECK	BRT	5/16
ABUTMENT DEMOLITION DETAILS			GARVER		

STATE OF OKLAHOMA	DEPARTMENT OF TRANSPORTATION
JOB PIECE NO. 29773(04)	SHEET NO. 13