

SUMMARY OF QUANTITIES - APPROACH SLAB NO. 2

ITEM	UNIT	PHASE I CONSTRUCTION	PHASE II CONSTRUCTION	TOTAL
⑤ CLSM BACKFILL	C.Y.	13.90	14.80	28.70
⑥ APPROACH SLAB	S.Y.	89.90	95.10	185.00
SAW-CUT GROOVING	S.Y.	73.10	78.70	151.80
CONCRETE PARAPET	L.F.	31.30	29.60	60.90
⑥ CLASS AA CONCRETE	C.Y.	32.50	34.40	66.90
MECHANICAL SPLICES	EA.	25.00		25.00
⑥ EPOXY COATED REINFORCING STEEL	LB.	6,591.00	6,804.00	13,395.00
WATER REPELLENT (VISUALLY INSPECTED)	S.Y.	22.00	21.00	43.00

- ⑤ CLSM Backfill shall be used at the discretion of the Engineer, to fill any voids prior to placement of the new Approach Slabs.
- ⑥ The contract unit price for "APPROACH SLAB" shall be full compensation for Concrete, Epoxy Coated Reinforcing Steel (including EP bars and Lap Splices, Backer Rod, Rapid Cure Joint Sealant, Type III Terminal Joints, labor, equipment and other incidentals necessary to complete the work as specified on the plans.

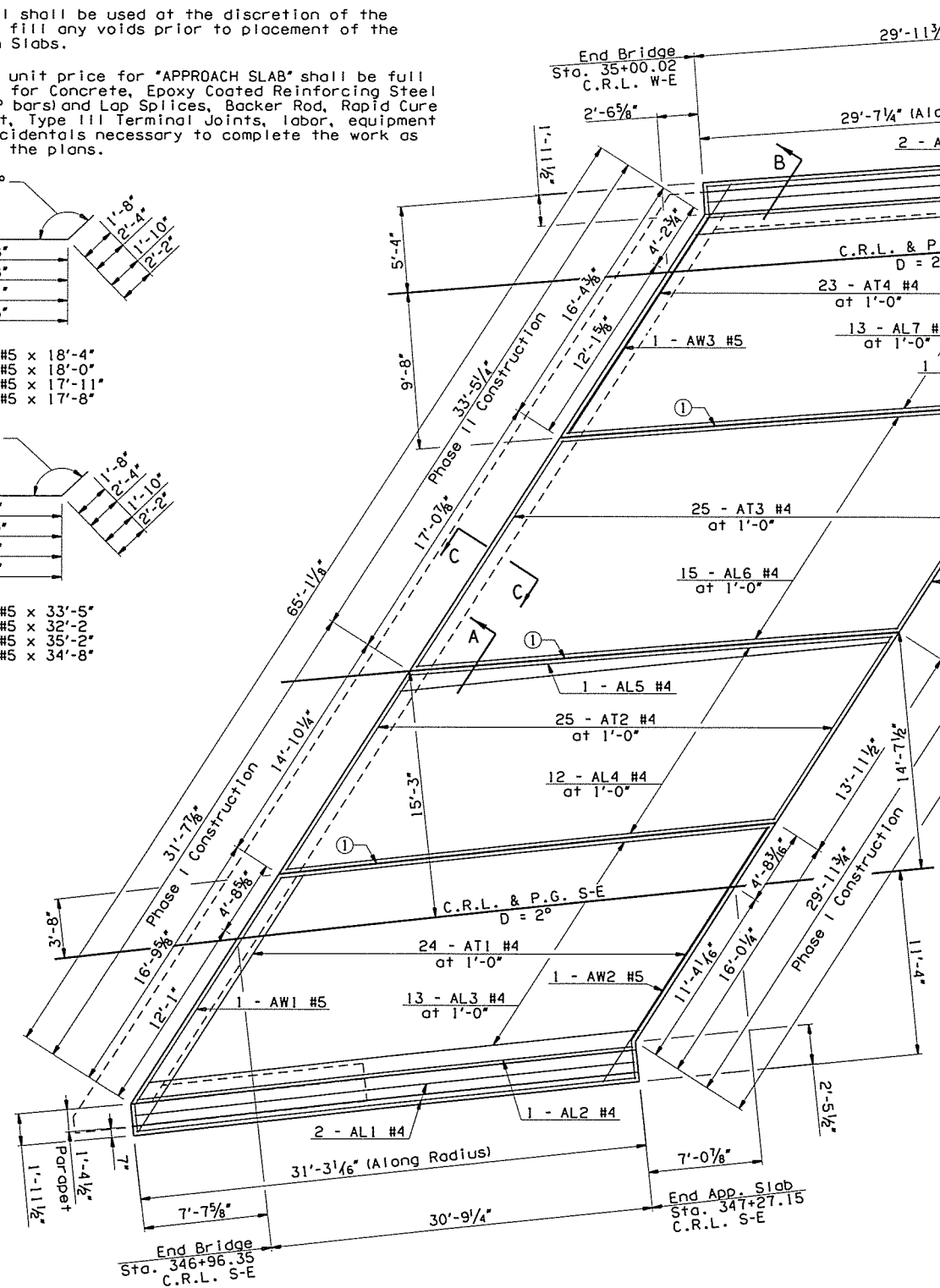
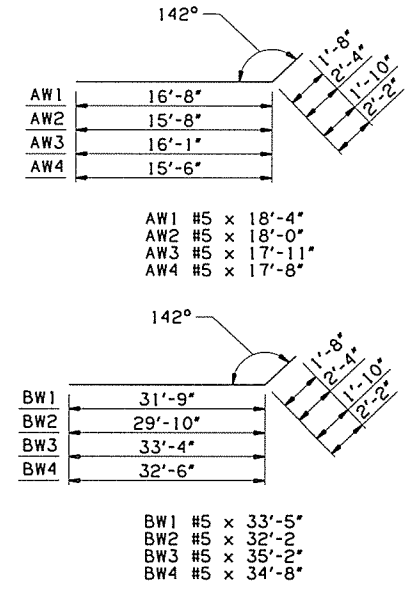
- ① 1/2" Longitudinal Sawed and Sealed Construction Joint in the top of Approach Slab (See DETAIL "A" on Sheet No. 46).
- ② Type III Terminal Joint. See DETAIL "B" on Sheet No. 46.
- ③ Install Mechanical Reinforcing Bar Coupler (Epoxy Coated) in accordance with Section 511.04.C.3. Installation shall follow the Manufacturer's recommendations. Couplers shall be attached BT1 #4 Bars and BW1 & BW2 #5 Bars in the Bottom of Approach Slab No. 2.
- ④ Splice the following Bars:
BT1 with C1 Bars.
BW1 & BW2 Bars with D1 Bars.
- Lap the following Bars:
C1 Bars with BT2 & BT3 Bars.
D1 Bars with BW3 & BW4 Bars.

NOTES:
Do not groove within 6" of the Construction Joint between the Approach Slab and the Deck Slab.

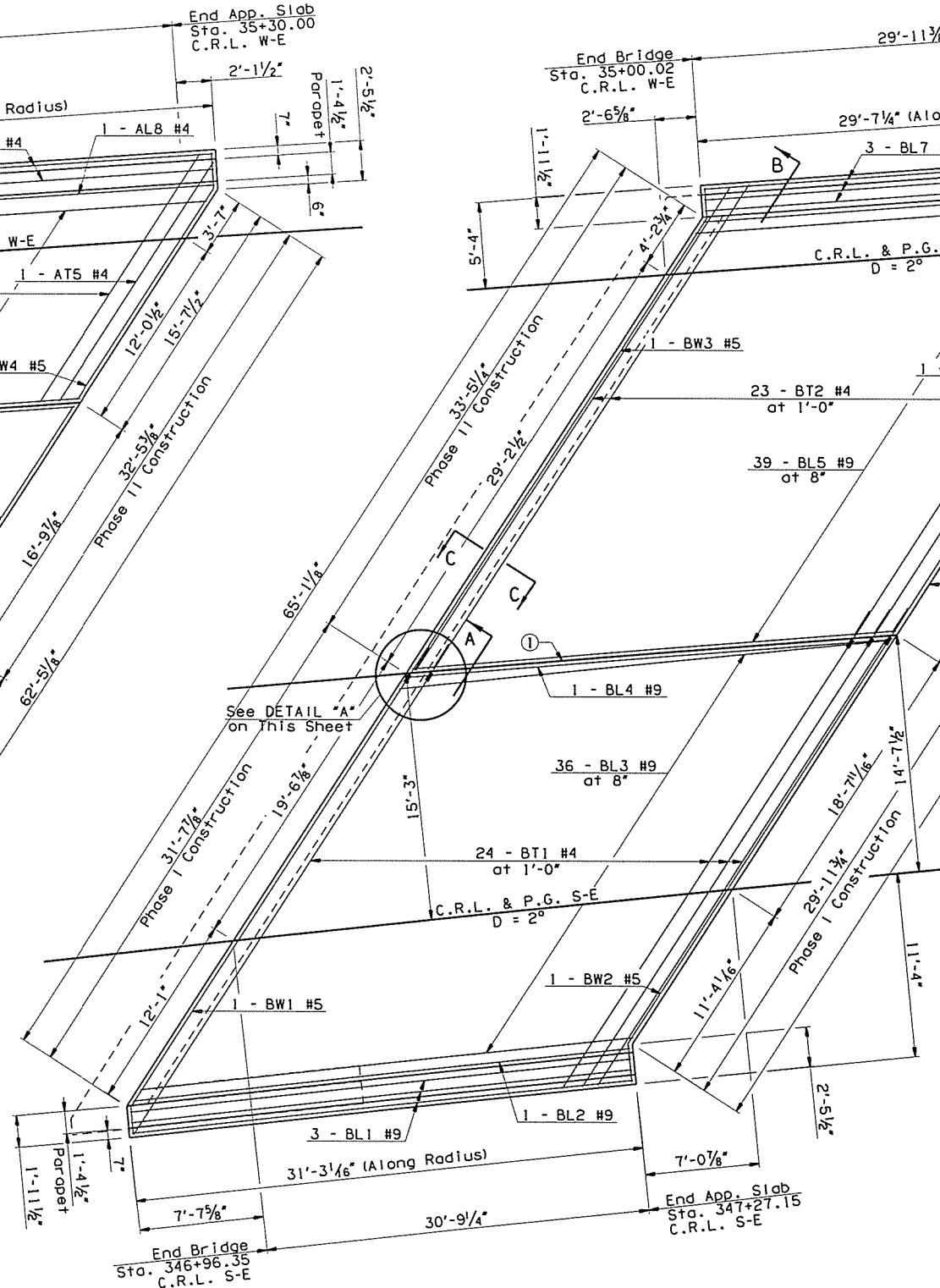
Parapet reinforcement not shown for Clarity. See Sheet No. 46 for details.

See Sheet No. 46 for SECTIONS A-A, B-B, & C-C.

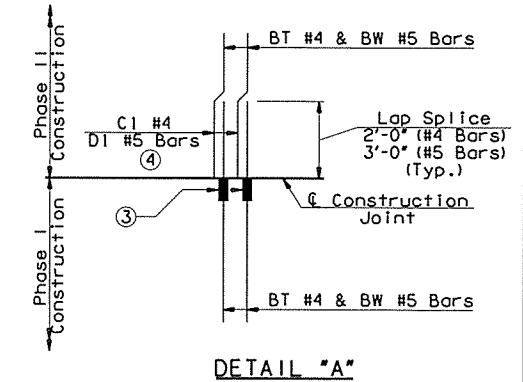
OKLAHOMA DEPARTMENT OF TRANSPORTATION					
FED. ROAD DIST. NO.	STATE	JOB PIECE NO.	FISCAL YEAR	SHEET NO.	TOTAL SHEETS
X	OKLA.	28872104			
DESCRIPTION				REVISIONS	DATE



APPROACH SLAB AT ABUTMENT NO. 2
(Showing Top Mat of Reinforcing steel)



APPROACH SLAB AT ABUTMENT NO. 2
(Showing Bottom Mat of Reinforcing steel)



NOTES:
Mechanical couplers shall only be used in Phase I Construction.

Cost of installing mechanical splices shall not be paid for directly but shall be included in the price bid per Each of "MECHANICAL SPLICES".

1-44 EB OVER S 38TH W AVE & TSU RR BRIDGE "B"	TULSA COUNTY	DESIGN	JMO 9/15
		DETAIL	SJL 9/15
		CHECK	BRT 11/15
APPROACH SLAB DETAILS (SHEET 2 OF 3)			
GARVER			