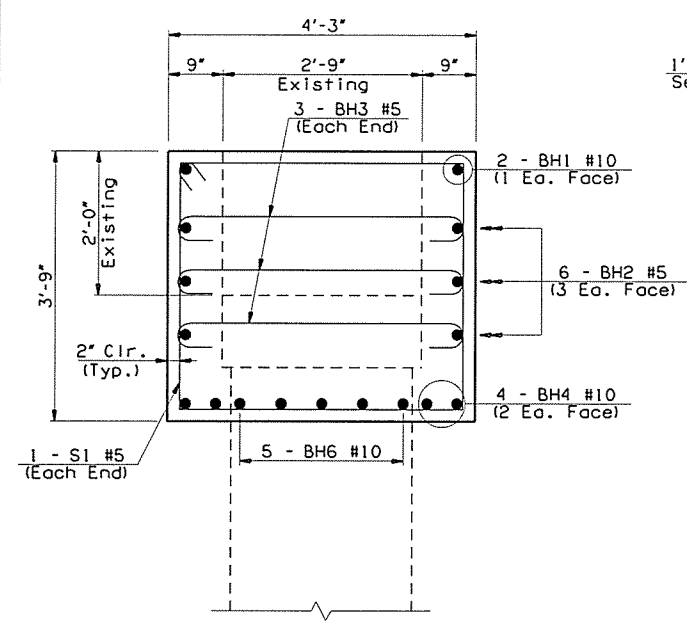
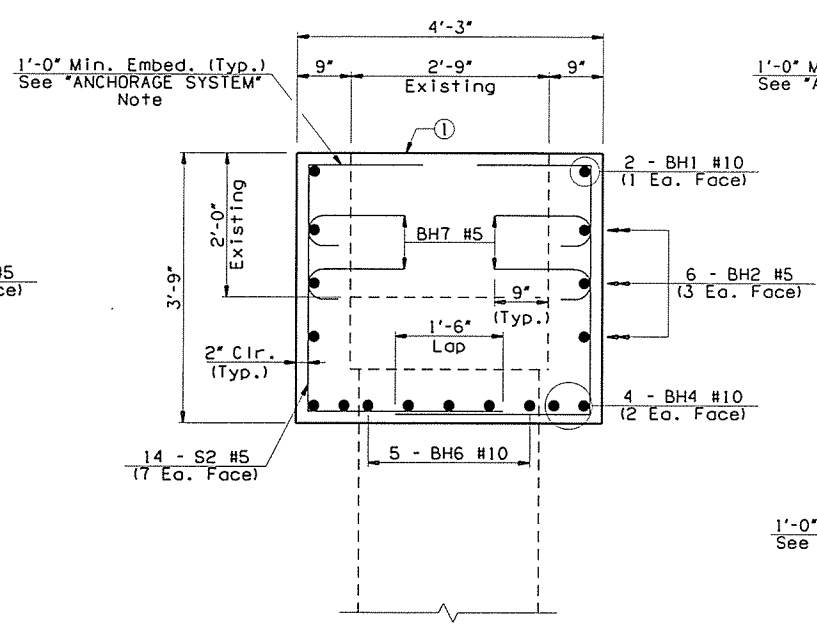


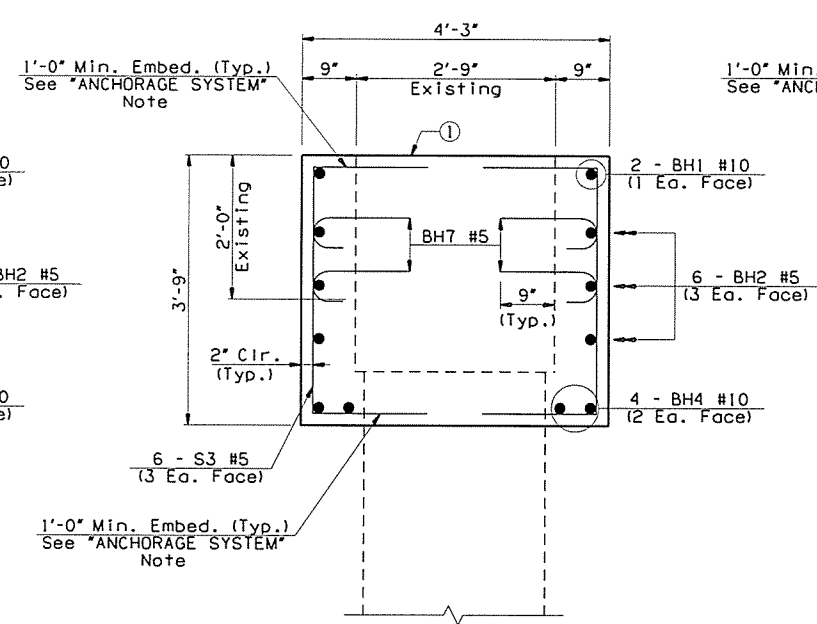
① The Contractor shall remove unsound concrete from the top of existing Pier Cap and clean any exposed Reinforcing Steel, then apply a new concrete finish. All costs for removal of unsound concrete, cleaning exposed Reinforcing Steel and refinishing tops of existing Pier Caps shall be included in other items of work.



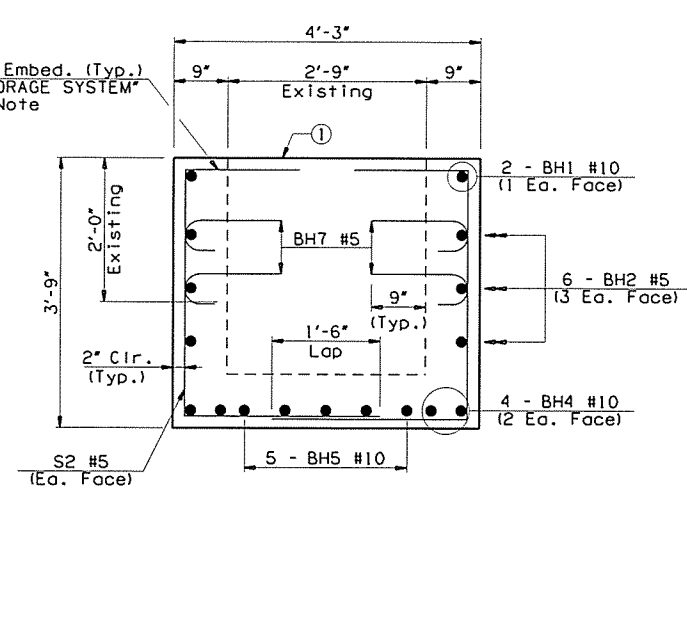
SECTION A-A



SECTION B-B



SECTION C-C



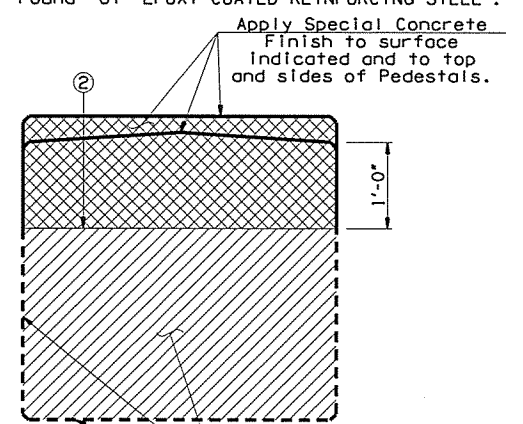
SECTION D-D

ANCHORAGE SYSTEM:

The Contractor shall use an Anchorage System that has been approved by ODOT's materials division. The Anchorage System shall be capable of developing the full strength of the reinforcing steel that is to be anchored. The embedment depth shown is to be adjusted to meet the Manufacturer's requirements. Anchorages shall be installed in accordance with the Manufacturer's specifications for the system used.

Drilling into the existing concrete to install the anchorage shall be accomplished without cutting existing concrete reinforcing steel bars. Prior to drilling, the Contractor shall locate and mark the existing concrete reinforcing steel bars with non-destructive tools, equipment and methods approved by the Engineer. If existing reinforcing steel bars are encountered during drilling, the drilling shall cease and the hole shall be grouted. The hole shall then be relocated to clear the existing reinforcing steel bars. Any adjustment in the locations of the new reinforcing bars from the plan locations shown shall be the minimum amount necessary to avoid cutting the existing concrete reinforcing steel bars and shall be approved by the Engineer.

All costs of the Anchorage Assemblies including labor, materials, tools, drilling, and incidentals necessary to complete the work shown in the plans shall be included in the price bid per Pound of "EPOXY COATED REINFORCING STEEL".



CONCRETE TREATMENT DETAILS

② Mask sides and ends of Pier Cap along this line to provide a clean straight finish at top and bottom of Special Concrete Finish application. See "GENERAL NOTE" on Sheet No. 2 for Special Concrete Finish Specifications.

BAR LIST - PIER NO. 1 CAP ENCASEMENT

MARK	SIZE	NO.	FORM	LENGTH
EPOXY COATED REINFORCING STEEL				
③ BH1	#10	2	BENT	89'-9"
④ BH2	#5	6	STR.	77'-5"
BH3	#5	6	BENT	5'-1"
③ BH4	#10	4	STR.	86'-11"
BH5	#10	15	STR.	17'-2"
BH6	#10	10	STR.	5'-2"
BH7	#5	512	BENT	1'-11"
S1	#5	2	BENT	14'-11"
S2	#5	238	BENT	7'-5"
S3	#5	24	BENT	6'-5"

BAR LIST - PIER NO. 2 CAP ENCASEMENT

MARK	SIZE	NO.	FORM	LENGTH
EPOXY COATED REINFORCING STEEL				
③ BH1	#10	2	BENT	86'-9"
④ BH2	#5	6	STR.	74'-5"
BH3	#5	6	BENT	5'-1"
③ BH4	#10	4	STR.	83'-11"
BH5	#10	15	STR.	16'-2"
BH6	#10	10	STR.	5'-2"
BH7	#5	488	BENT	1'-11"
S1	#5	2	BENT	14'-11"
S2	#5	226	BENT	7'-5"
S3	#5	24	BENT	6'-5"

BAR LIST - PIER NO. 3 CAP ENCASEMENT

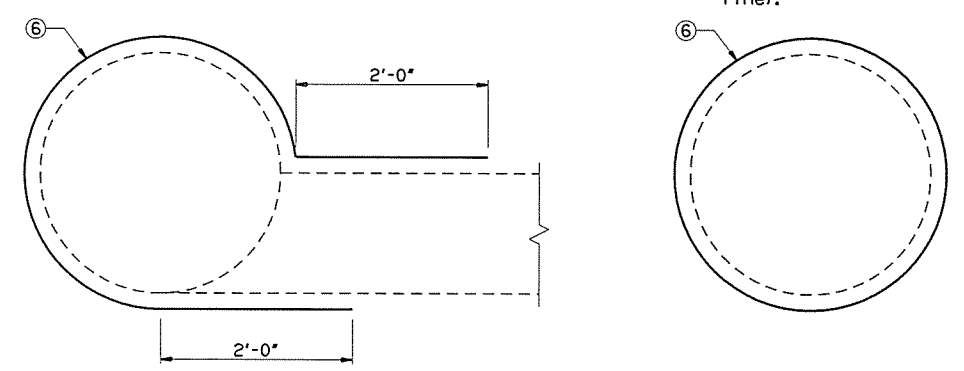
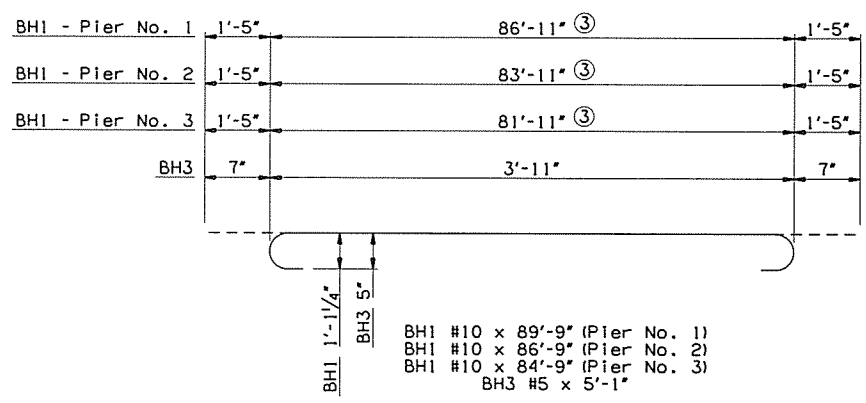
MARK	SIZE	NO.	FORM	LENGTH
EPOXY COATED REINFORCING STEEL				
③ BH1	#10	2	BENT	84'-9"
④ BH2	#5	6	STR.	72'-5"
BH3	#5	6	BENT	5'-1"
③ BH4	#10	4	STR.	81'-11"
BH5	#10	15	STR.	15'-8"
BH6	#10	10	STR.	4'-11"
BH7	#5	476	BENT	1'-11"
S1	#5	2	BENT	14'-11"
S2	#5	220	BENT	7'-5"
S3	#5	24	BENT	6'-5"

③ Includes One 13'-9" Lap Length

④ Includes One 4'-3" Lap Length

NOTE:

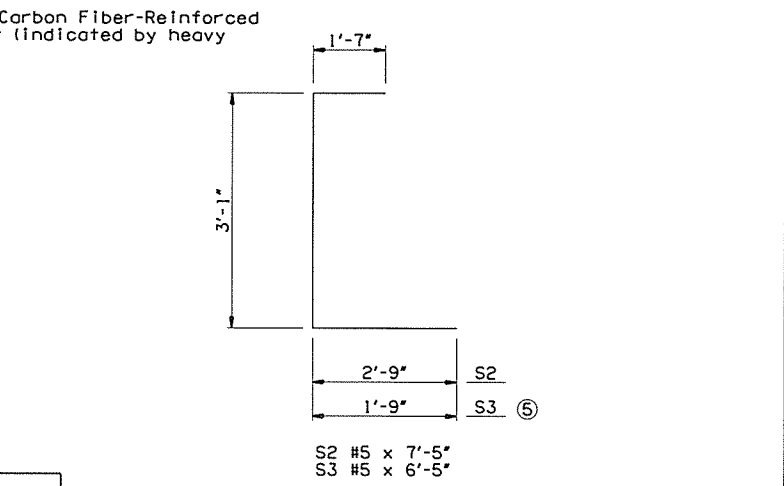
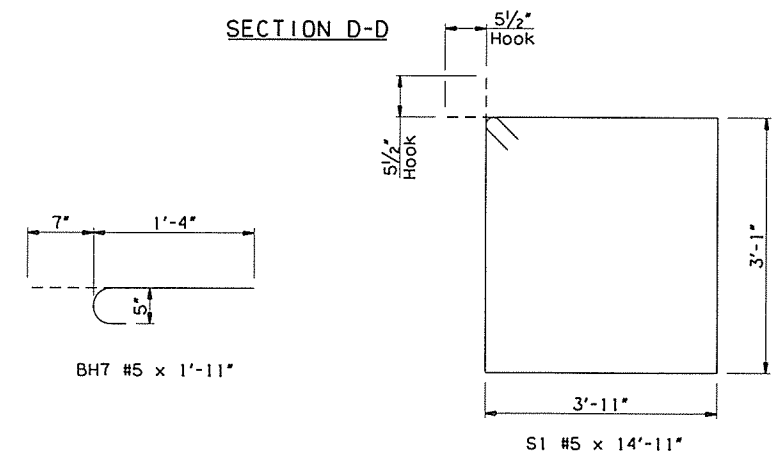
All Laps shall be staggered.



SECTION E-E SECTION F-F

SUMMARY OF QUANTITIES - PIERS

ITEM	UNIT	PIER 1	PIER 2	PIER 3	TOTAL
SPECIAL CONCRETE FINISH	S.Y.	57.00	55.00	53.00	165.00
CLASS A CONCRETE	C.Y.	21.20	20.40	19.80	61.40
EPOXY COATED REINFORCING STEEL	LB.	7,172.00	6,824.00	6,693.00	20,689.00
WATER REPELLENT (VISUALLY INSPECTED)	S.Y.	78.00	75.00	73.00	226.00
PREPARATION OF CRACKS, ABOVE WATER	L.F.	12.00	12.00	12.00	36.00
EPOXY RESIN, ABOVE WATER	GAL.	0.40	0.40	0.40	1.20
PNEUMATICALLY PLACED MORTAR	S.Y.	6.00	6.00	6.00	18.00
(SP) CARBON FIBER-REINFORCED POLYMER	S.F.	127.00		160.60	287.60
(SP) CORROSION INHIBITOR (SURFACE APPLIED)	S.Y.	14.20		17.90	32.10



⑤ Field cut as necessary. Maintain embedment and clear distance requirements.

1-44 EB OVER S 38TH W AVE TULSA COUNTY DESIGN JTR 4/16
 & TSU RR BRIDGE "B" DETAIL JTR 4/16
 CHECK BRT 4/16
PIER DETAILS (SHEET 2 OF 2)
GARVER