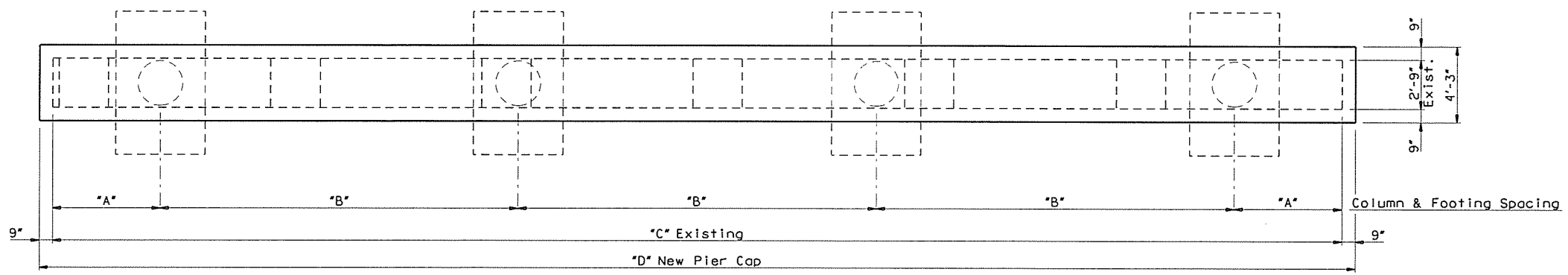


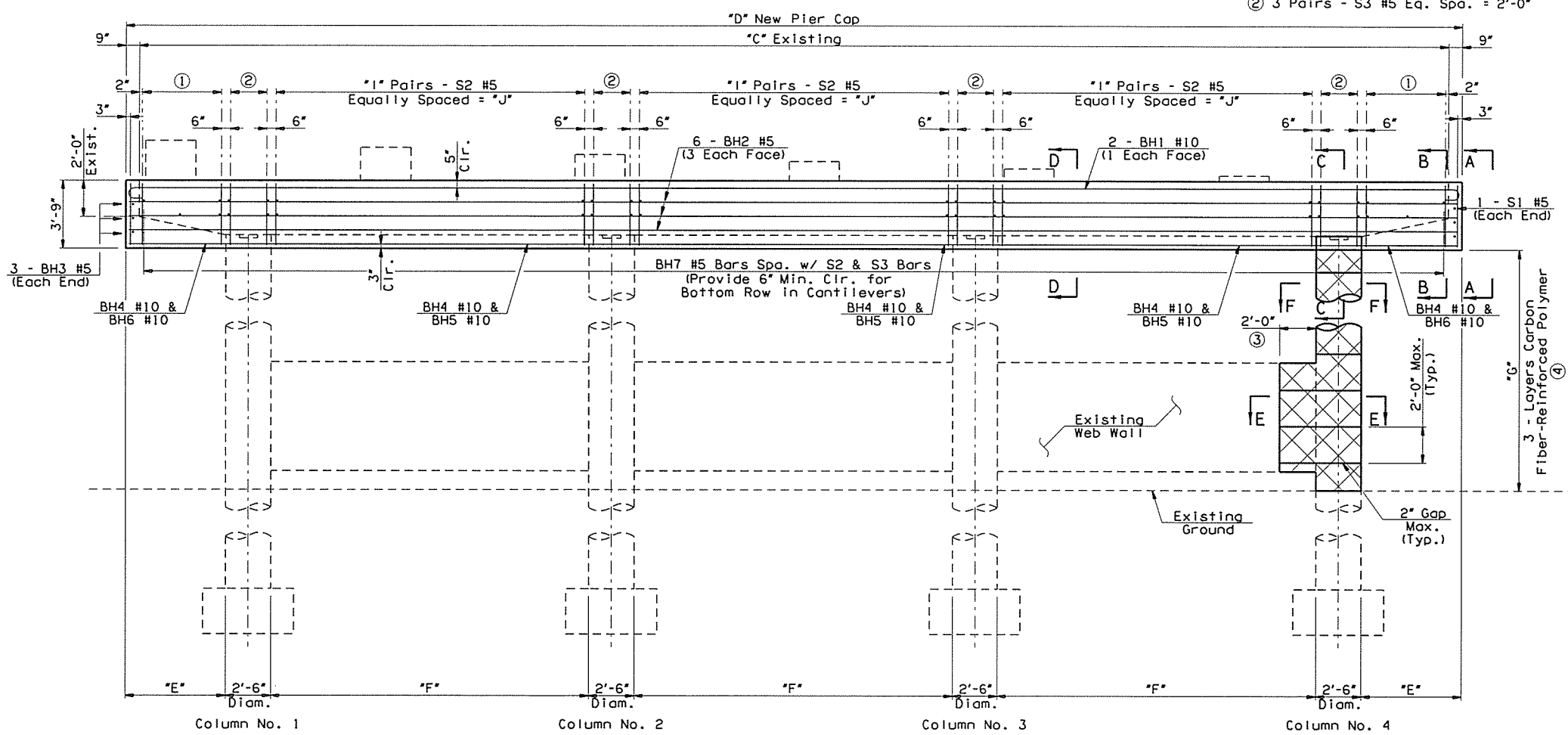
TABLE OF VARIABLES

	PIER NO. 1	PIER NO. 2	PIER NO. 3
LENGTH "A"	6'-0"	6'-0"	5'-9"
LENGTH "B"	20'-0"	19'-0"	18'-6"
LENGTH "C"	72'-0"	69'-0"	67'-0"
LENGTH "D"	73'-6"	70'-6"	68'-6"
LENGTH "E"	5'-6"	5'-6"	5'-3"
LENGTH "F"	17'-6"	16'-6"	16'-0"
LENGTH "G"	16'-2"		16'-9"
LENGTH "H"	4'-4"	4'-4"	4'-1"
"I" PAIRS	35	33	32
LENGTH "J"	17'-0"	16'-0"	15'-6"



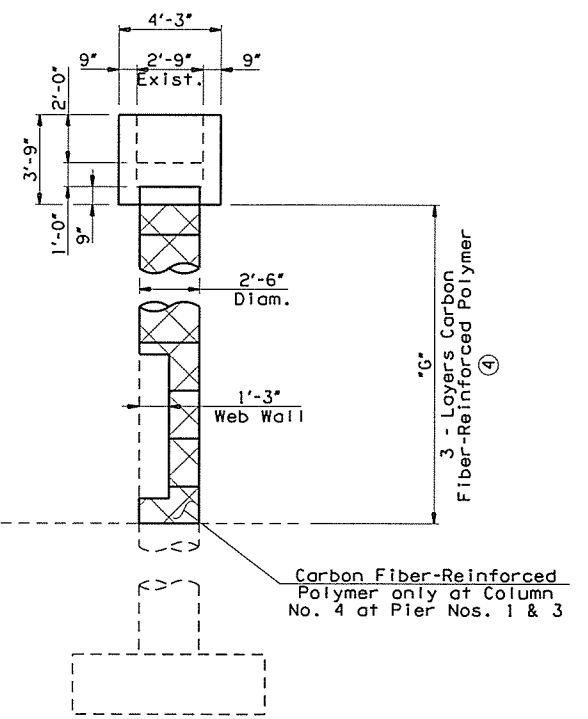
PLAN

- ① 7 Pairs - S2 #5 Eq. Spa. = "H"
- ② 3 Pairs - S3 #5 Eq. Spa. = 2'-0"



ELEVATION

(Looking Forward Station; similar for all Piers)  
Cap Encasement



SIDE ELEVATION

All dimensions shown are based on information from original As-Built Plans and is only for informational purposes. It is the Contractor's responsibility to verify all information prior to any demolition or construction.

- ③ Installation of Carbon Fiber-Reinforced Polymer to the Web Wall shall only be applied to Pier No. 3 at Column No. 4.
- ④ Carbon Fiber-reinforced Polymer shall be applied to the column in three (3) layers. The first and third layers shall be applied in a horizontal pattern. The second layer shall be applied in a vertical pattern.

NOTES:  
Pier No. 1 does not have a Web Wall. A generic Web Wall is shown on this sheet for informational purposes only.  
For Sections A-A thru F-F, Concrete Treatment Details, Bar Bends and Bar Lists, see Sheet No. 36.

I-44 EB OVER S 38TH W AVE TULSA COUNTY		DESIGN	JTR	4/16
& TSU RR BRIDGE "B"		DETAIL	JTR	4/16
PIER DETAILS (SHEET 1 OF 2)		CHECK	BRT	4/16
		<b>GARVER</b>		
STATE OF OKLAHOMA	DEPARTMENT OF TRANSPORTATION			
	JOB PIECE NO. 28872(04)	SHEET NO. 35		