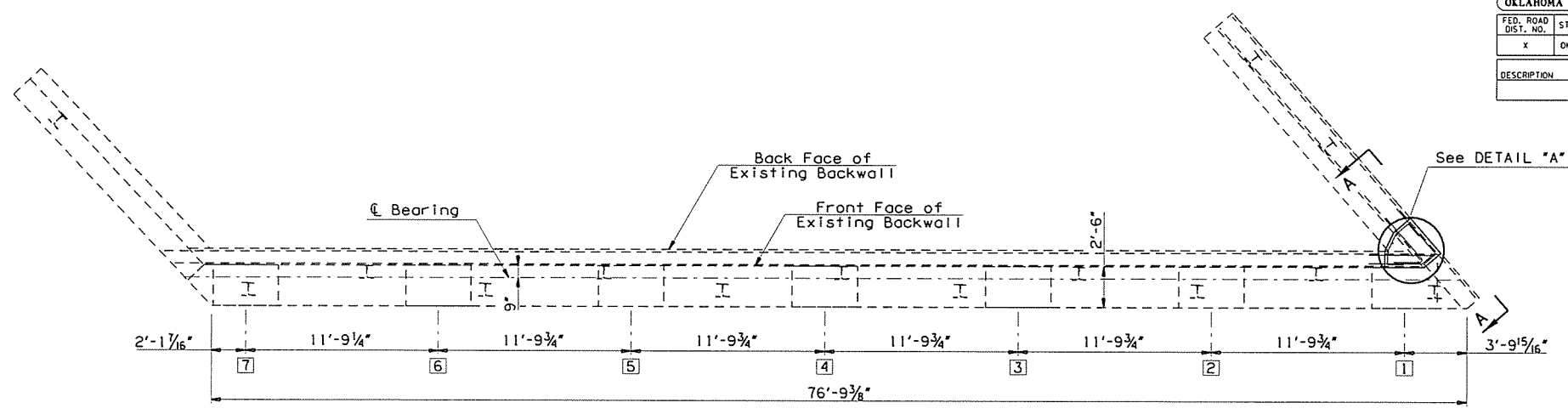
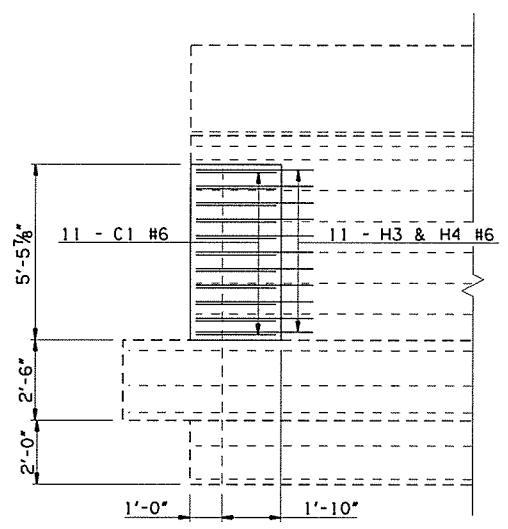


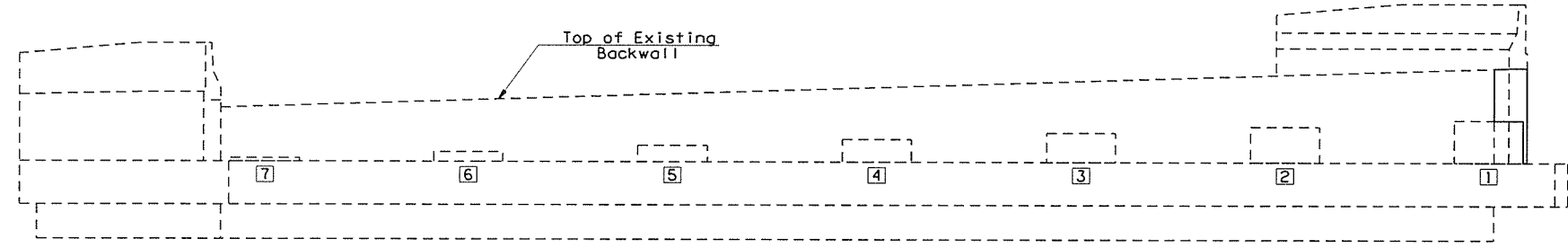
DETAIL "A"



PLAN



SECTION A-A



ELEVATION
(Looking Back Station)

ABUTMENT NO. 1 CONSTRUCTIONS DETAILS

NOTES:

All incidental construction required for the removal of portions of existing Wingwalls, including concrete removal, excavation, saw cutting, labor & equipment shall be included in the price per Lump Sum of "REMOVAL OF BRIDGE ITEMS".

For additional demolition & construction details at Abutment No. 1, see Sheet Nos. 30 & 32.

For Abutment No. 2 demolition & construction details, see Sheet No. 31.

For Bar Lists, Bar Bends, & Summary of Quantities, see Sheet No. 34.

ANCHORAGE SYSTEM:

The Contractor shall use an Anchorage System that has been approved by ODOT's materials division. The Anchorage System shall be capable of developing the full strength of the reinforcing steel that is to be anchored. The embedment depth shown is to be adjusted to meet the Manufacturer's requirements. Anchorages shall be installed in accordance with the Manufacturer's specifications for the system used.

Drilling into the existing concrete to install the anchorage shall be accomplished without cutting existing concrete reinforcing steel bars. Prior to drilling, the Contractor shall locate and mark the existing concrete reinforcing steel bars with non-destructive tools, equipment and methods approved by the Engineer. If existing reinforcing steel bars are encountered during drilling, the drilling shall cease and the hole shall be grouted. The hole shall then be relocated to clear the existing reinforcing steel bars. Any adjustment in the locations of the new reinforcing bars from the plan locations shown shall be the minimum amount necessary to avoid cutting the existing concrete reinforcing steel bars and shall be approved by the Engineer.

All costs of the Anchorage Assemblies including labor, materials, tools, drilling, and incidentals necessary to complete the work shown in the plans shall be included in the price bid per Pound of "EPOXY COATED REINFORCING STEEL".

① See "ANCHORAGE SYSTEM" note on this sheet for details regarding the drilling and epoxying of the proposed H #6 Bars.

| | | | | |
|--|------------------------------|---------------|-----|-------|
| I-44 EB OVER S 38TH W AVE TULSA COUNTY | | DESIGN | JMD | 8/15 |
| & TSU RR | | DETAIL | NBR | 10/15 |
| BRIDGE "B" | | CHECK | BRT | 11/15 |
| ABUTMENT DETAILS (SHEET 4 OF 5) | | GARVER | | |
| STATE OF OKLAHOMA | DEPARTMENT OF TRANSPORTATION | | | |
| | JOB PIECE NO. 28872104 | SHEET NO. 33 | | |