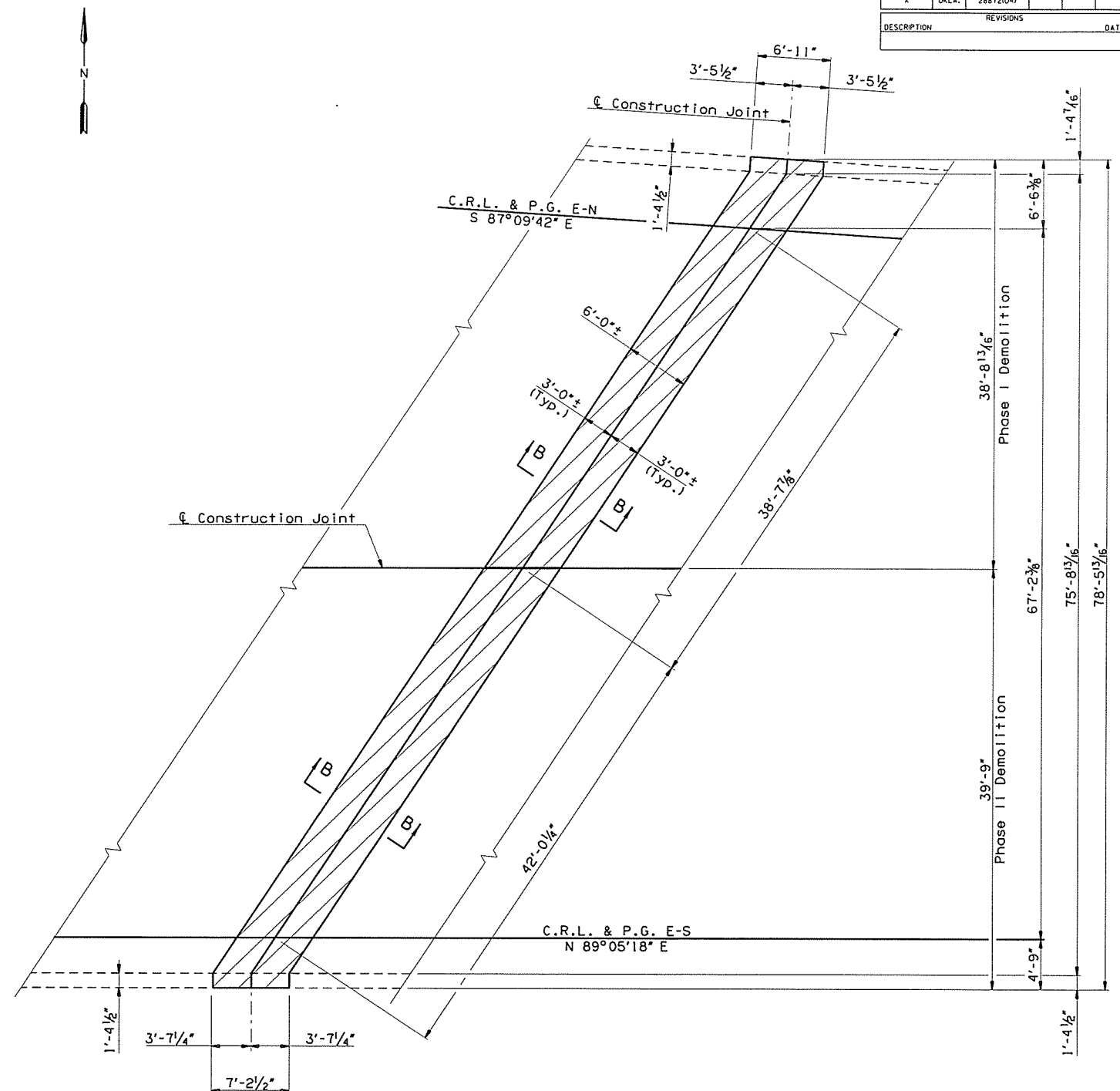
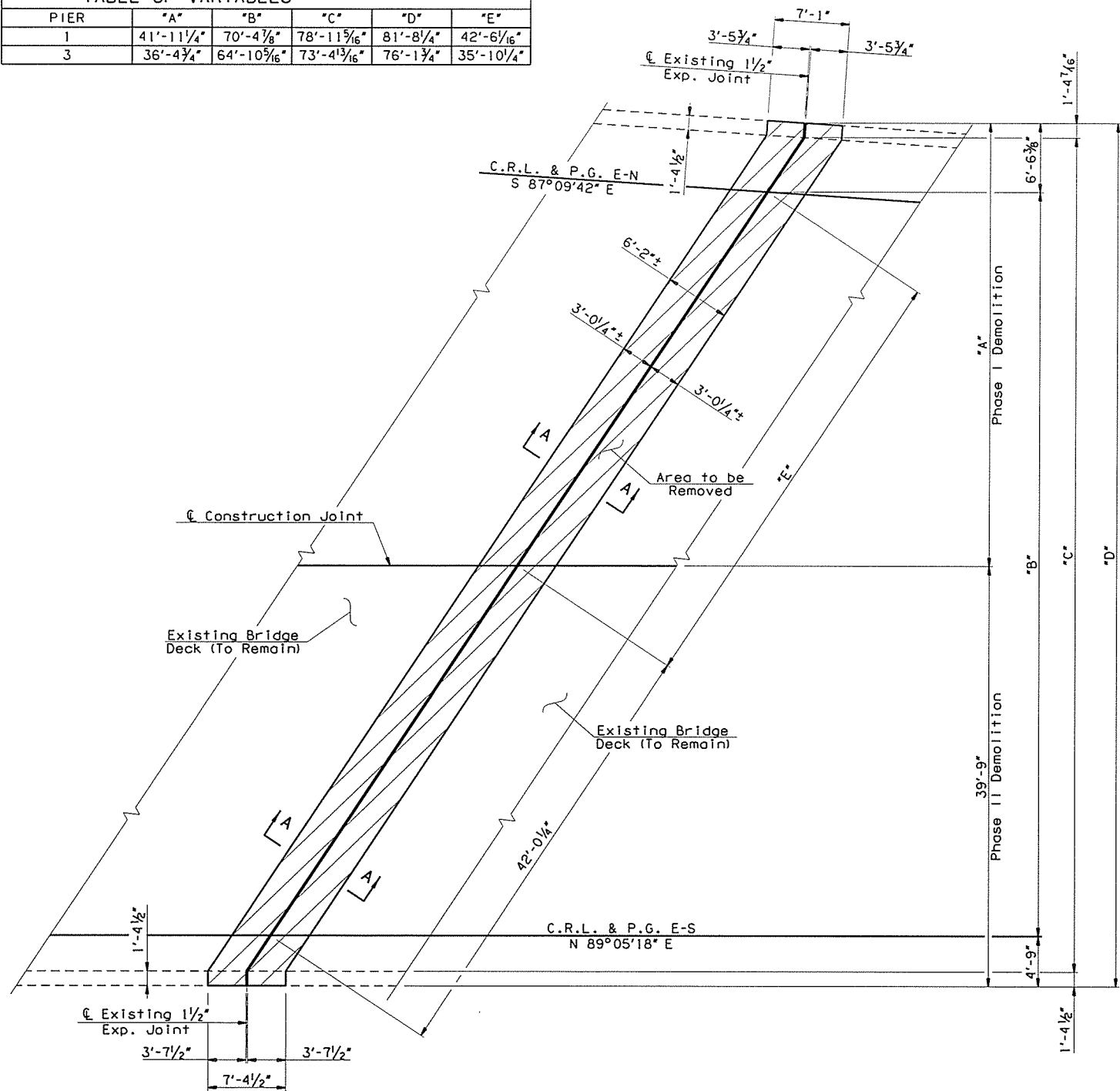


TABLE OF VARIABLES					
PIER	"A"	"B"	"C"	"D"	"E"
1	41'-11 1/4"	70'-4 7/8"	78'-11 5/16"	81'-8 1/4"	42'-6 1/16"
3	36'-4 3/4"	64'-10 5/16"	73'-4 13/16"	76'-1 3/4"	35'-10 1/4"



NOTES:
See Sheet No. 18 for SECTIONS A-A & B-B. **DEMOLITION PLAN AT PIER NOS. 1 & 3**

See Sheet Nos. 19 & 20 for details on construction of the existing Expansion and Construction Joints at the Piers.

All costs associated with removing the existing concrete deck and replacement with Class AA concrete for Sealed Expansion Joint and Sawn and Sealed Construction Joint repairs including cleaning, straightening, and preserving existing reinforcing steel, saw cutting, materials, labor, and any incidentals necessary to complete the work as shown in the plans shall be included in the price bid per Square Yard of "CLASS C BRIDGE DECK REPAIR".

High Early Strength (HES) Concrete shall be used for deck/joint repairs. Deck repairs shall obtain a minimum compressive strength of 3,000 p.s.i. prior to placement of loads on repaired areas. Payment of HES Concrete is included in the price bid per Square Yard of "CLASS C BRIDGE DECK REPAIR".

All costs associated with the installation of Sealed Expansion Joints at Pier Nos. 1 & 3 shall be included in the price bid per Linear Foot of "SEALED EXPANSION JOINT".

All costs associated with the installation of Sawn and Sealed Construction Joint at Pier No. 2 shall be included in the price bid per Linear Foot of "RAPID CURE JOINT SEALANT".

DEMOLITION PLAN AT PIER NO. 2

LEGEND

- Demolition cost to be included in the price bid per Square Yard of "CLASS C BRIDGE DECK REPAIR".
- Existing Structure

1-44 WB OVER S 38TH W AVE TULSA COUNTY		DESIGN	JMD	10/15
& TSU RR		DETAIL	SJL	10/15
BRIDGE "A"		CHECK	BRT	11/15
SUPERSTRUCTURE DETAILS (SHEET 1 OF 5)		GARVER		