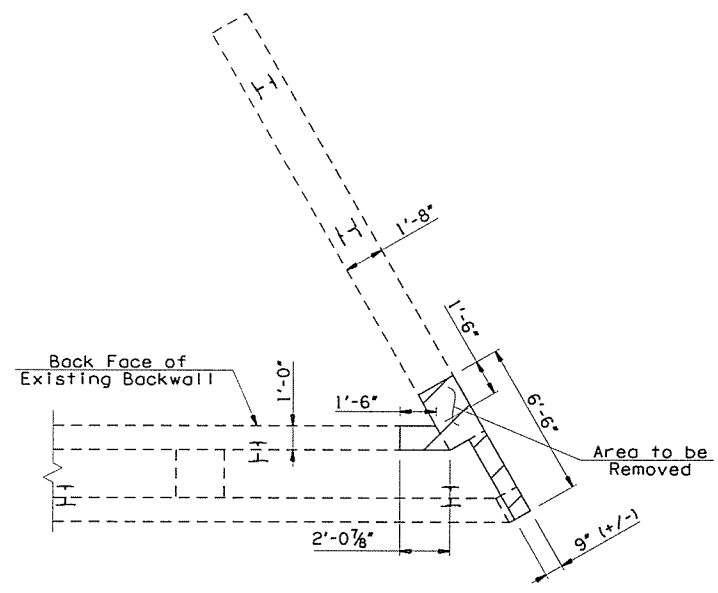
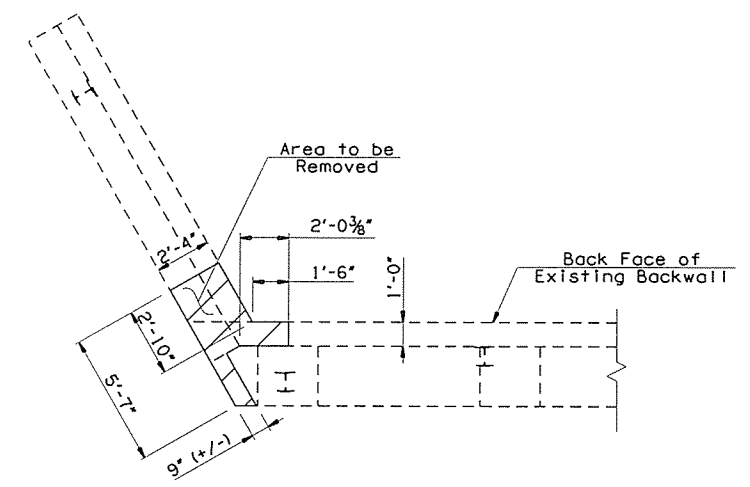


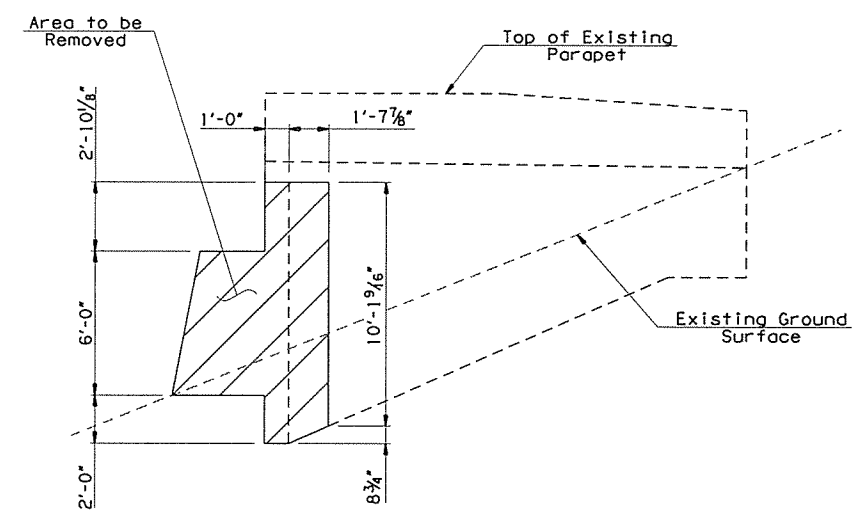
OKLAHOMA DEPARTMENT OF TRANSPORTATION						
FED. ROAD DIST. NO.	STATE	JOB PIECE NO.	FISCAL YEAR	SHEET NO.	TOTAL SHEETS	
X	OKLA.	28872(04)				
DESCRIPTION				REVISIONS	DATE	



PLAN



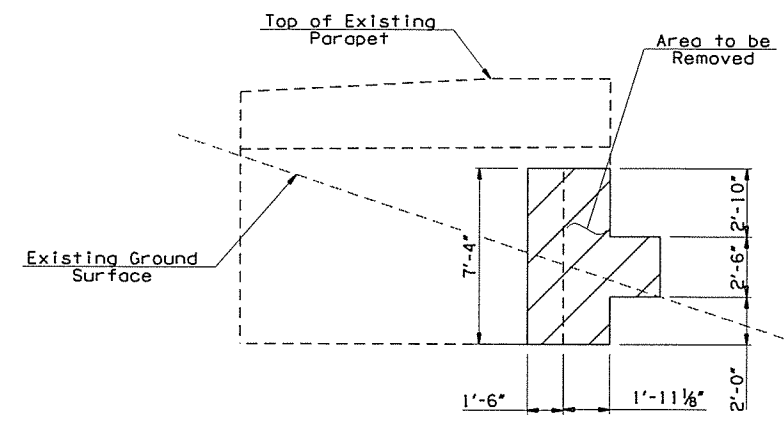
PLAN



ELEVATION

NORTHWEST WING

ABUTMENT NO. 1 DEMOLITION DETAILS



ELEVATION

NORTHEAST WING

ABUTMENT NO. 2 DEMOLITION DETAILS

NOTES:

All incidental construction required for the removal of portions of existing Abutments, including concrete removal, excavation, saw cutting, labor & equipment shall be included in the price per Lump Sum of "REMOVAL OF BRIDGE ITEMS".

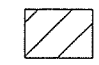
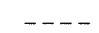
All dimensions of the existing components shown on the plans are approximate. The contractor shall verify all data necessary to remove portions of the existing Abutments & shall be solely responsible for the accuracy thereof.

For Abutment construction details, see Sheet No. 14.

Removal of portions of backwall shall be performed after removal of parapet & wing portions.

All horizontal & vertical reinforcing steel shall be cleaned & preserved, except of section loss is greater than 25%.

LEGEND

-  Demolition cost to be included in the price bid per Lump Sum of "REMOVAL OF BRIDGE ITEMS".
-  Existing Structure

I-44 WB OVER S 38TH W AVE TULSA COUNTY		DESIGN	JMO	8/15
& TSU RR BRIDGE "A"		DETAIL	SJL	10/15
		CHECK	BRT	11/15
		GARVER		

STATE OF OKLAHOMA	DEPARTMENT OF TRANSPORTATION
JOB PIECE NO. 28872(04)	SHEET NO. 13