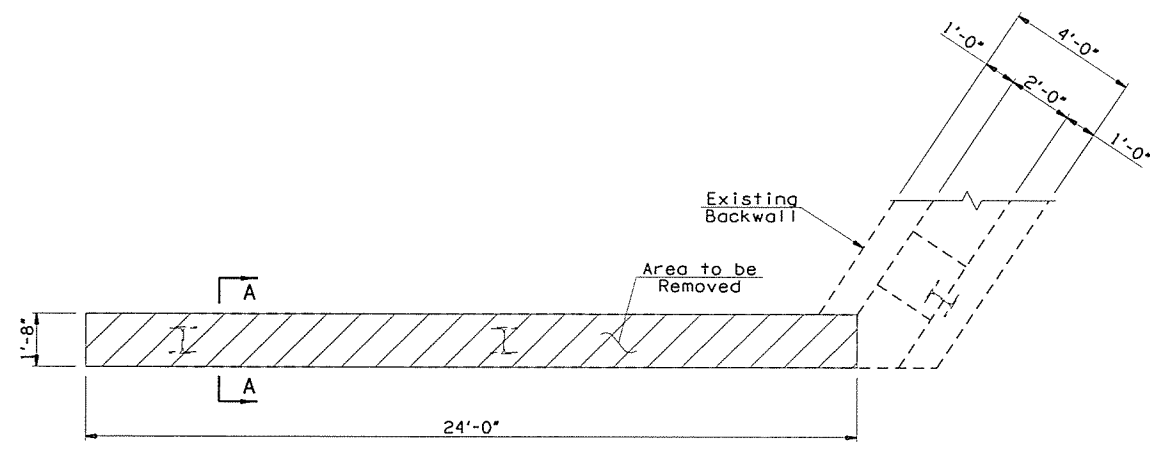
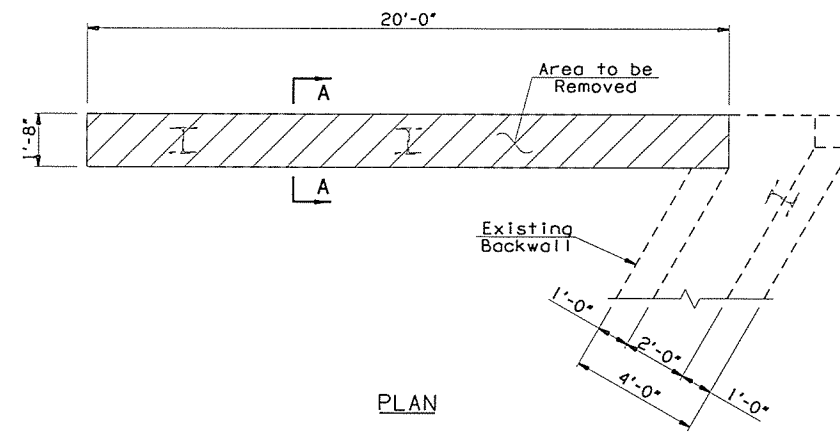


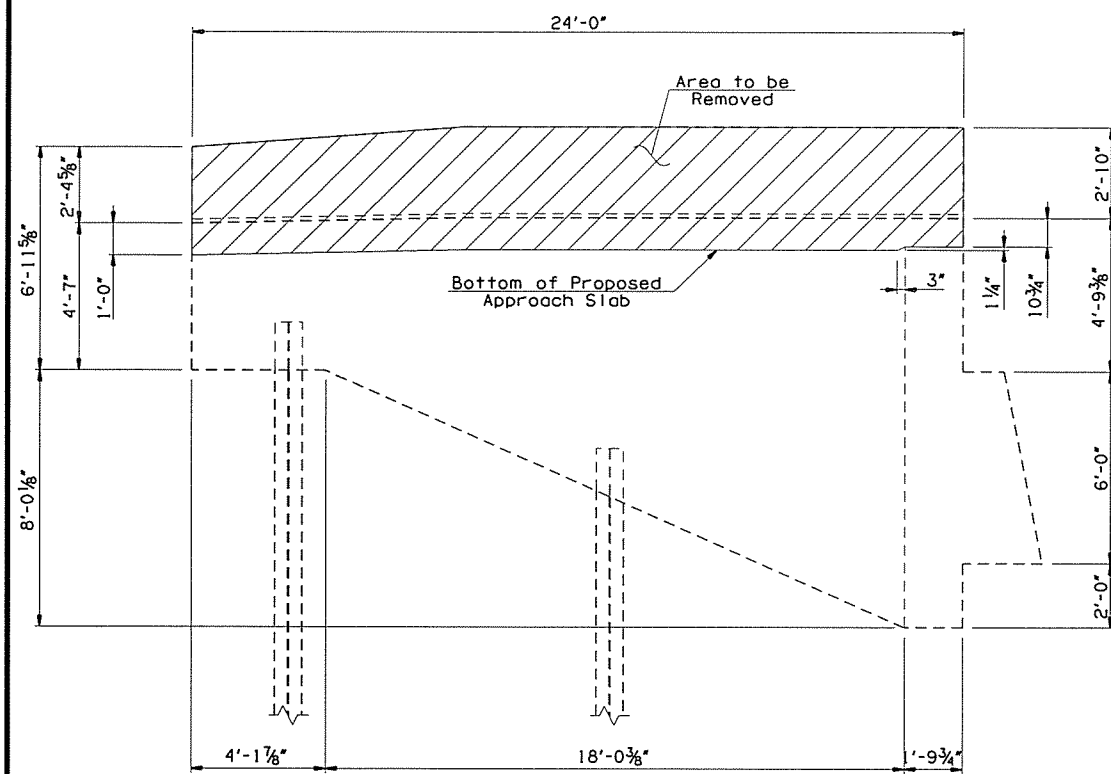
OKLAHOMA DEPARTMENT OF TRANSPORTATION						
FED. ROAD DIST. NO.	STATE	JOB PIECE NO.	FISCAL YEAR	SHEET NO.	TOTAL SHEETS	
X	OKLA.	28872(04)				
DESCRIPTION						DATE
REVISIONS						



PLAN

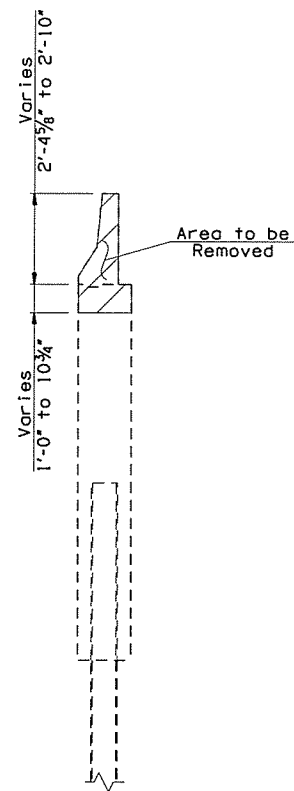


PLAN

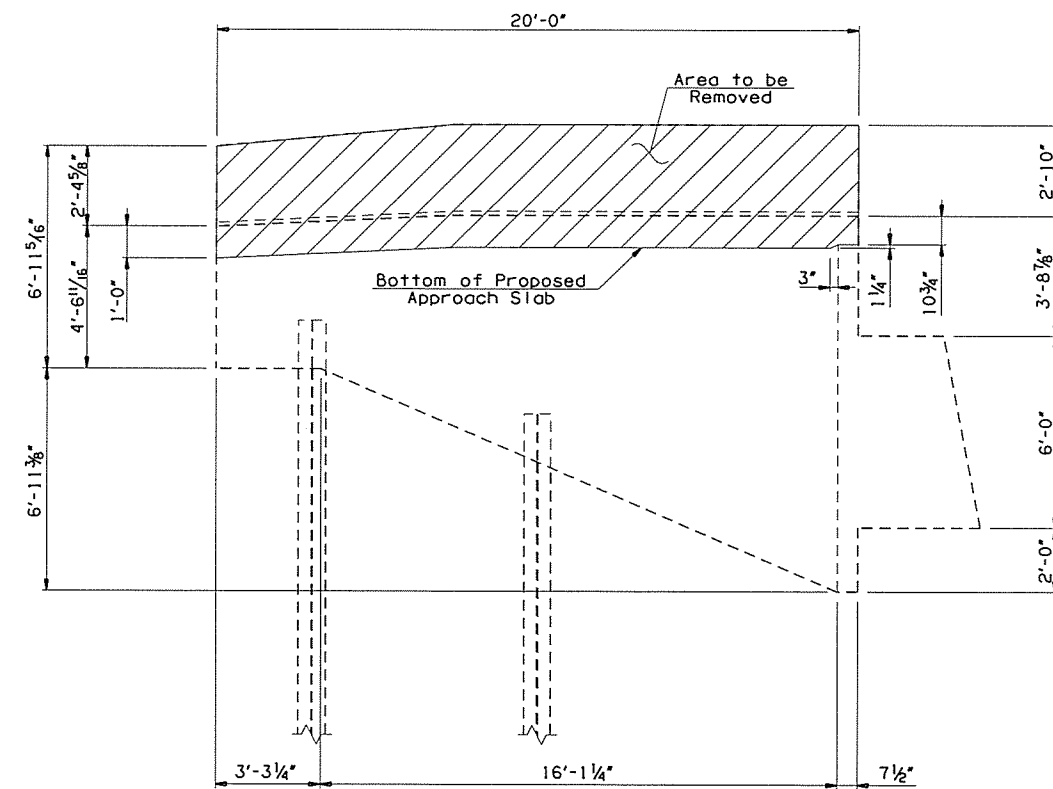


ELEVATION

SOUTHWEST WING

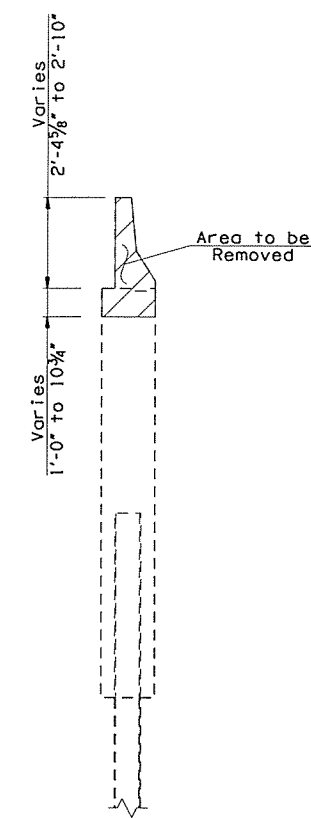


SECTION A-A
(Looking Forward Station)



ELEVATION

NORTHWEST WING



SECTION A-A
(Looking Forward Station)

ABUTMENT NO. 1 WING DEMOLITION DETAILS

LEGEND

- Demolition cost to be included in the price bid per Lump Sum of "REMOVAL OF BRIDGE ITEMS".
- Existing Structure

NOTES:

All incidental construction required for the removal of portions of existing wingwalls, including concrete removal, excavation, saw cutting, labor & equipment shall be included in the price per Lump Sum of "REMOVAL OF BRIDGE ITEMS".

All dimensions of the existing components shown on the plans are approximate. The contractor shall verify all data necessary to remove portions of the existing abutments & shall be solely responsible for the accuracy thereof.

For construction details at Abutment No. 1, see Sheet No. 14.

Removal of portions of backwall shall be performed after removal of parapet & wing portions.

I-44 WB OVER S 38TH W AVE TULSA COUNTY		DESIGN	JMO	8/15
& TSU RR		DETAIL	SJL	9/15
BRIDGE "A"		CHECK	BRT	11/15
ABUTMENT DETAILS (SHEET 1 OF 4)		GARVER		

STATE OF OKLAHOMA	DEPARTMENT OF TRANSPORTATION
JOB PIECE NO. 28872(04)	SHEET NO. 11