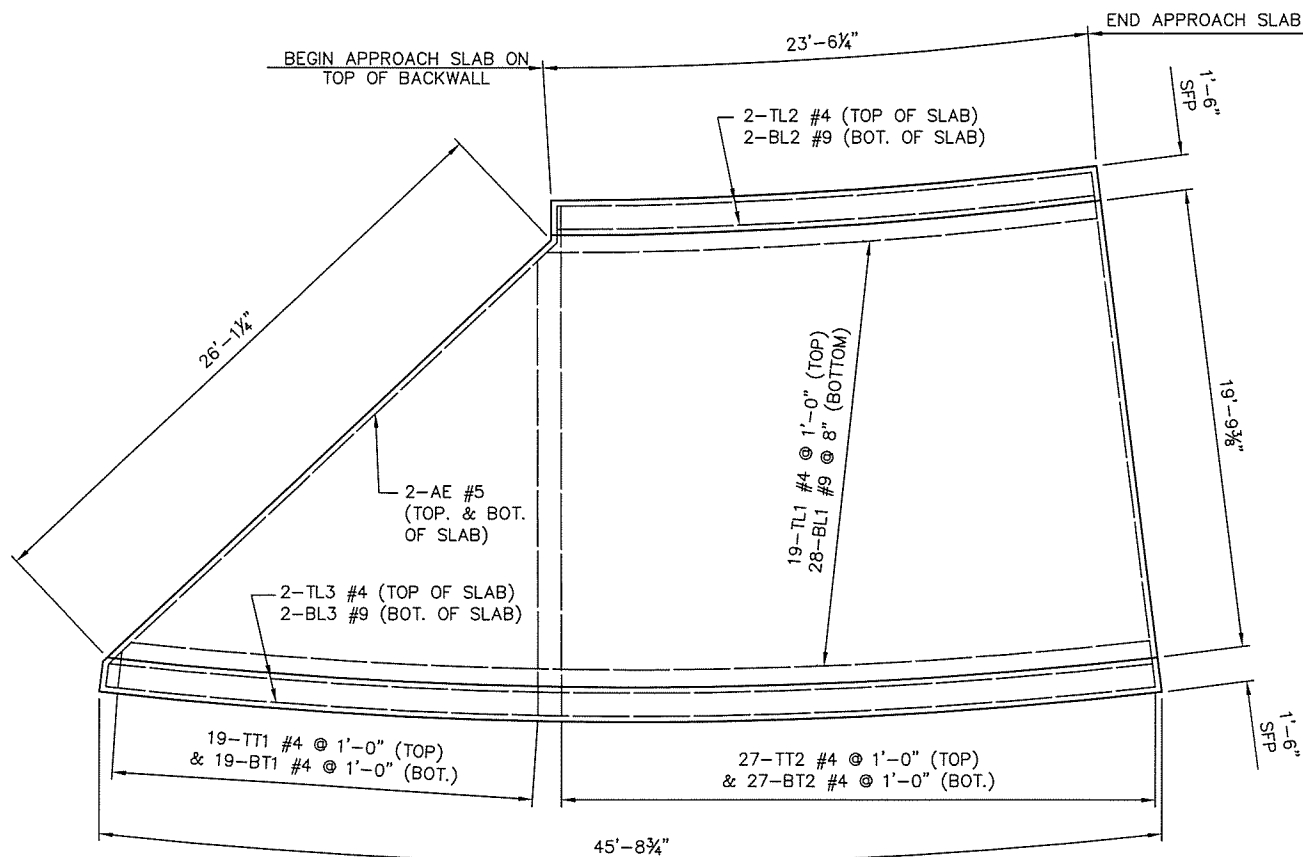
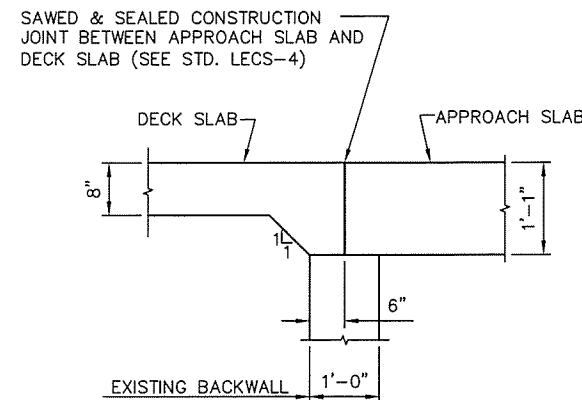


X:\Projects\611-ODOT-IDL North & South Bound Lanes\DWG\Sheets\611-BRIDGE 15\15SHEETS\1517-SB-BR15-AS02.dwg, 5/13/2016 8:34:28 AM, cdm



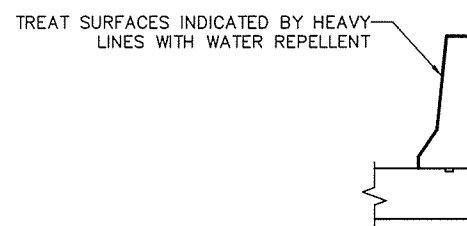
APPROACH SLAB NO. 2 REINFORCING PLAN

FS2 BARS PROJECTING FROM APPROACH SLAB INTO TRAFFIC RAILS HAVE BEEN OMITTED FOR CLARITY. SEE SHEET 16 FOR PLACEMENT OF FS2 BARS.

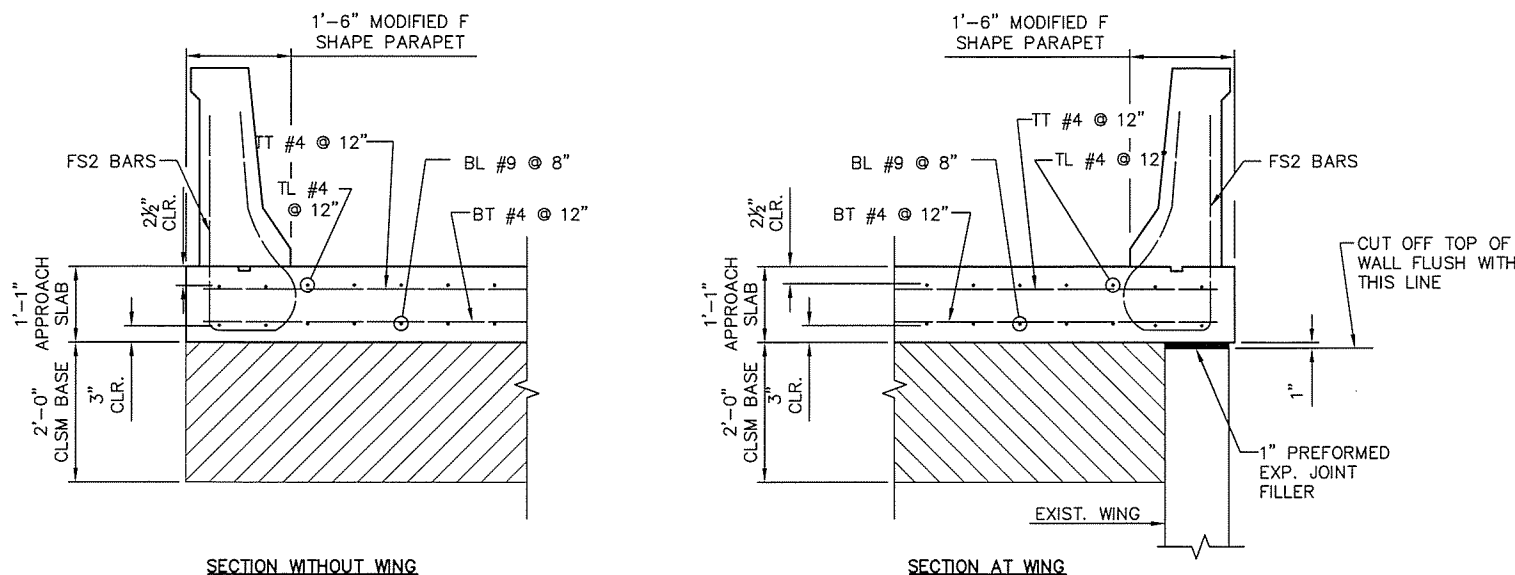


SECTION THROUGH CONSTRUCTION JOINT BETWEEN APPROACH SLAB AND DECK SLAB

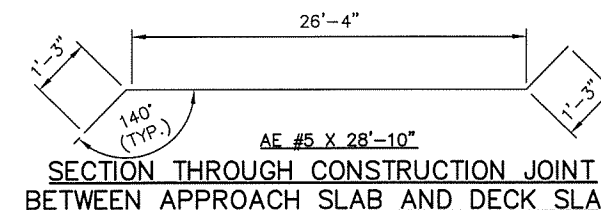
BAR LIST-APPROACH SLAB NO. 2					
MARK	NO.	SIZE	FORM	LENGTH	LENGTH VARIATION
EPOXY COATED					
AE	2	#5	BNT.	28'-10"	
BL1	28	#9	STR.	33'-9" AVG.	23'-9" TO 43'-9"
BL2	2	#9	STR.	23'-2"	
BL3	2	#9	STR.	45'-2"	
BT1	19	#4	STR.	10'-6" AVG.	1'-6" TO 19'-6"
BT2	27	#4	STR.	22'-3"	
FS2	68	#5	BNT.	7'-4"	
TL1	19	#4	STR.	33'-9" AVG.	23'-9" TO 43'-9"
TL2	2	#4	STR.	23'-2"	
TL3	2	#4	STR.	45'-2"	
TT1	19	#4	STR.	10'-6" AVG.	1'-6" TO 19'-6"
TT2	27	#4	STR.	22'-3"	



WATER REPELLENT TREATMENT DETAIL



TYPICAL APPROACH SLAB SECTION



SUMMARY OF QUANTITIES - APPROACH SLAB				
ITEM	UNIT	APPROACH SLAB NO. 1	APPROACH SLAB NO. 2	TOTAL
① APPROACH SLAB	SY	36.00	87.00	123.00
CONCRETE PARAPET	LF	19.00	70.00	89.00
WATER REPELLENT (VISUALLY INSPECTED)	SY	8.00	29.00	37.00
CLSM BACKFILL	CY	24.00	58.00	82.00

① THIS QUANTITY INCLUDES ALL COSTS TO CONSTRUCT THE APPROACH SLAB INCLUDING THE COST OF CONCRETE, REINFORCING STEEL, PREFORMED EXPANSION JOINT MATERIAL, LABOR, EQUIPMENT AND OTHER INCIDENTALS TO COMPLETE THE WORK AS SHOWN.

DESIGN	SJN	01/09	N-1ST RAMP OVER US75	TULSA COUNTY
DRAWN	SJN	01/09	APPROACH SLABS DETAILS (SHEET NO. 2 OF 2)	
CHECKED	SAL	01/09		
APPROVED				
SQUAD	BKJ		STATE JOB PIECE NO. 28879(04)	SHEET NO. 18