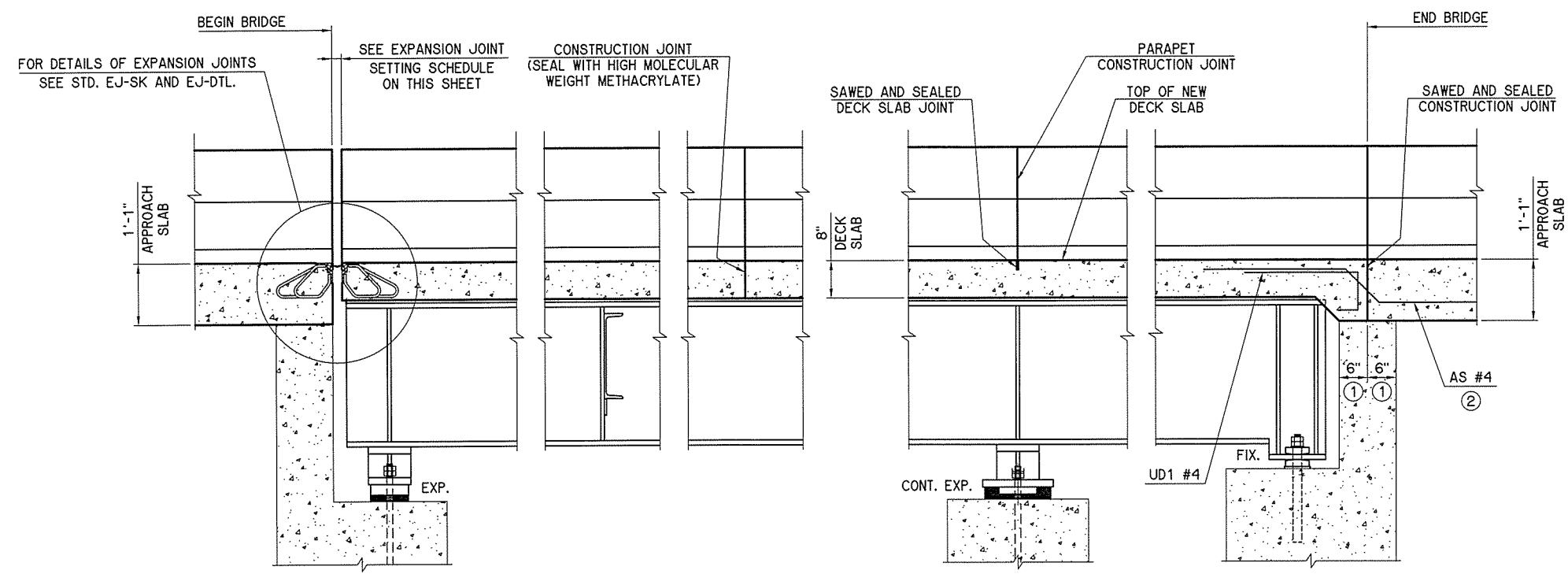


REV. NO.	REVISIONS DESCRIPTION	DATE

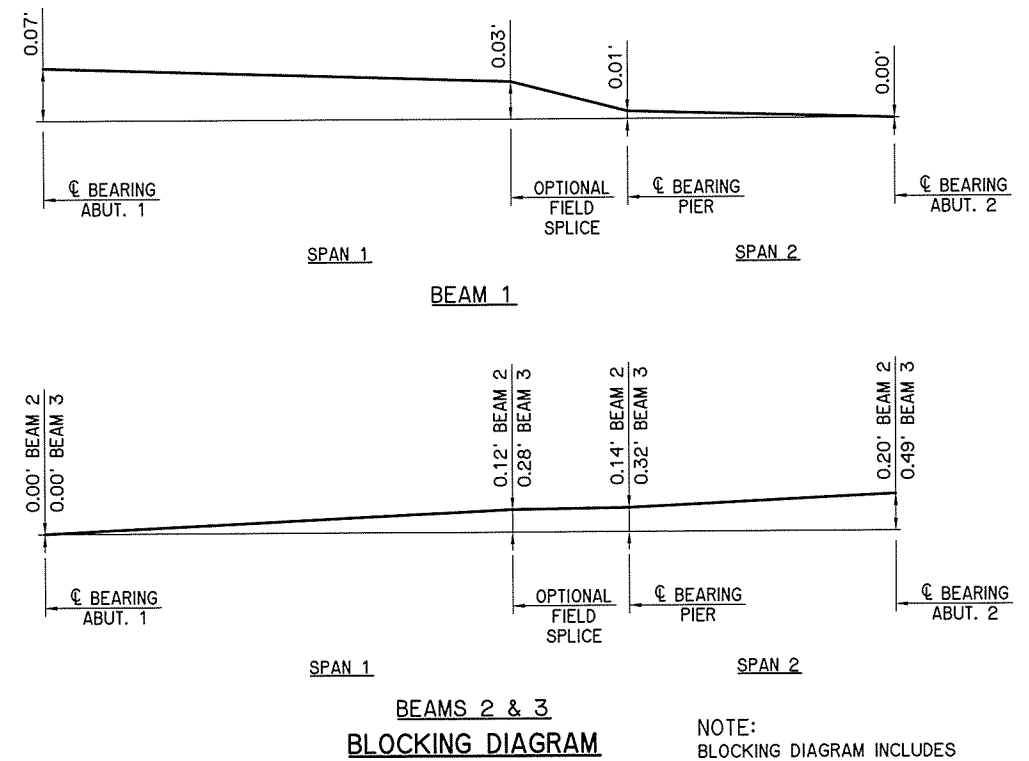


JOINT OPENING	AMBIENT AIR TEMP (°F)
1 1/2"	120
1 5/8"	107
1 3/4"	92
1 7/8"	76
2"	60
2 1/8"	44
2 1/4"	28
2 3/8"	13
2 1/2"	0

ABUTMENT NO. 1 INTERMEDIATE DIAPHRAGM PIER ABUTMENT NO. 2

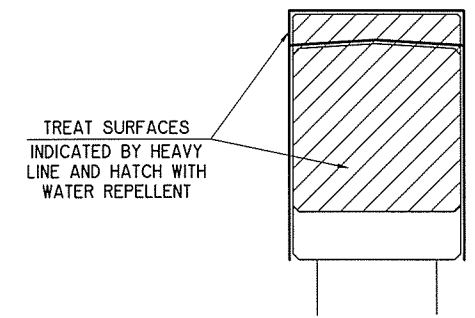
LONGITUDINAL SECTION
DO NOT TIE WITHIN 6" OF ALL CONSTRUCTION JOINTS

- ① DIMENSION NORMAL TO BACKWALL.
- ② AS BARS SHALL BE TIED TO THE TOP LAYER OF REINFORCING IN THE DECK SLAB AND TO THE BOTTOM LAYER OF REINFORCING IN THE APPROACH SLAB. AS BARS MUST BE IN PLACE PRIOR TO POURING THE DECK SLAB CONCRETE.



NOTE: BLOCKING DIAGRAM INCLUDES ALLOWANCE FOR GRADE AND DEAD LOAD DEFLECTION (BEAM & DECK).

ITEM	UNIT	ABUTMENTS	PIER	SUPERSTR.	APPR. SLABS	TOTAL
CLSM BACKFILL	C.Y.				82.0	82.0
APPROACH SLAB	S.Y.				123.0	123.0
SAW-CUT GROOVING	S.Y.			194.3		194.3
SEALED EXPANSION JOINT	L.F.			20.0		20.0
42" F-SHAPED PARAPET	L.F.			200.0	89.0	289.0
STRUCTURAL STEEL	LB.			63,810		63,810
STAINLESS STEEL FIXED BEARING ASSEMBLY	EA.			3		3
STAINLESS STEEL EXPANSION BEARING ASSEMBLY	EA.			6		6
SPECIAL CONCRETE FINISH	S.Y.	181	49			230
CLASS AA CONCRETE	C.Y.			52.0		52.0
CLASS C CONCRETE	C.Y.	1.1				1.1
EPOXY COATED REINFORCING STEEL	LB.			19,890		19,890
WATER REPELLENT (VISUALLY INSPECTED)	S.Y.	52	26	150	37	265
PREPARATION OF CRACKS, ABOVE WATER	L.F.	17.8				17.8
EPOXY RESIN, ABOVE WATER	GAL.	2				2
PNEUMATICALLY PLACED MORTAR	S.Y.	66.7				66.7
SEALER CRACK PREPARATION	L.F.			20.4		20.4
SEALER RESIN	GAL.			1		1
5" CONCRETE SIDEWALK	S.Y.			17		17
REMOVAL OF BRIDGE ITEMS	L.SUM					1
2" GALV. STEEL ELECTRICAL CONDUIT EXPOSED	L.F.					110
PULL BOX	EA.					1
(PL) REMOVE AND RESET LIGHT POLE	EA.					1



PIER WATER REPELLENT TREATMENT DETAIL

N-1ST RAMP OVER U.S. 75		TULSA COUNTY		Design	JNS
SUPERSTRUCTURE DETAILS		SHEET 2 OF 10 LONGITUDINAL SECTION		Detail	FEZ DRB
				Check	JNS
STATE OF OKLAHOMA		DEPARTMENT OF TRANSPORTATION		WHITE ENGINEERING ASSOCIATES	
				JOB PIECE NO. 28879(04)	