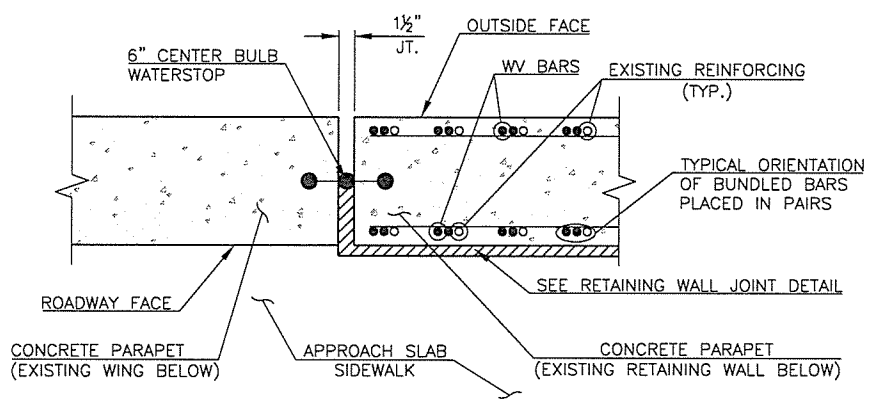
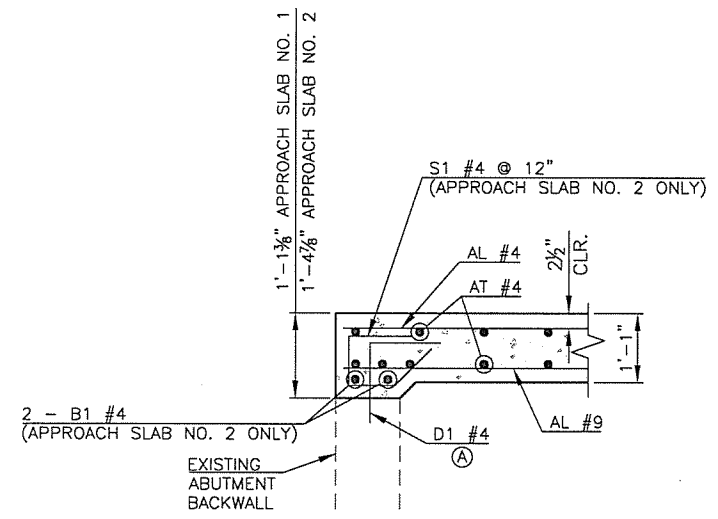


**SECTION G**



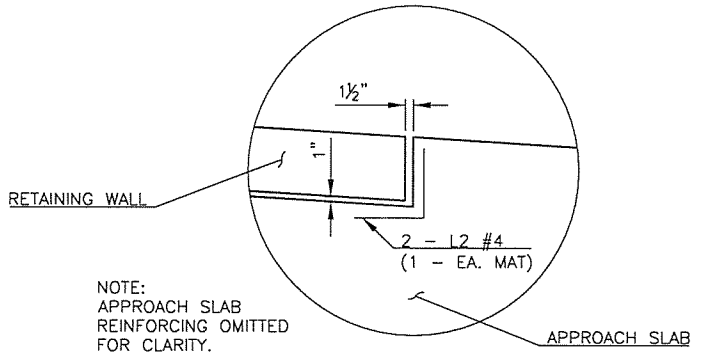
NOTE:  
 WATERSTOP SHALL BE PLACED FROM TOP OF REMAINING EXISTING RETAINING WALL TO 3" BELOW TOP OF NEW CONCRETE PARAPET. ALL COST FOR 6" CENTERBULB WATERSTOP TO BE INCLUDED IN OTHER ITEMS OF WORK

**SECTION H**



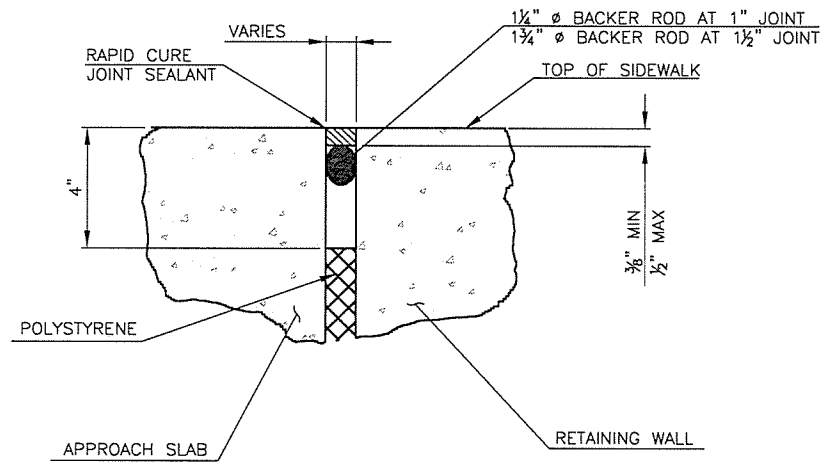
**SECTION I**

NOTE:  
 STEEL RECEPTOR AND J1, W1 AND W2 BARS OMITTED FOR CLARITY. FOR ADDITIONAL DETAILS OF EXPANSION JOINT AT ABUTMENT, SEE SHEET 24.



NOTE:  
 APPROACH SLAB REINFORCING OMITTED FOR CLARITY.

**DETAIL A**



**RETAINING WALL JOINT DETAIL**

Ⓐ DRILL AND EPOXY D1 BARS INTO EXISTING ABUTMENT BACKWALL AND WING ACCORDING TO SECTION 509.04(D) OF THE STANDARD SPECIFICATIONS. ALL COST OF INSTALLING DOWELS, INCLUDING LABOR, MATERIALS, AND INCIDENTALS NECESSARY TO DO THE WORK, SHALL BE INCLUDED IN OTHER ITEMS OF WORK.

NOTE:  
 PLACE REINFORCING IN THE TOP OF THE APPROACH SLAB 2" FROM EITHER SIDE OF THE SAWED AND SEALED JOINTS. FOR ADDITIONAL DETAILS OF SAWED AND SEALED JOINTS, SEE STD. LECS-4. FOR ADDITIONAL DETAIL OF APPROACH SLAB AT ABUTMENT, SEE SHEET 22.

NOTE:  
 FOR ADDITIONAL DETAILS OF CONCRETE PARAPET, SEE SHEETS 29-31.

NOTE:  
 FOR CONCRETE PARAPET NOTES, SEE SHEET 23.

DESIGN	B.J.K.	4TH OVER 1-444	TULSA COUNTY
DRAWN	M.R.S.	<b>APPROACH SLAB DETAILS (SHEET 2 OF 2)</b>	
CHECKED	B.J.K., J.W.H.		
APPROV.	T.A.C.		
SQUAD	CEC	JOB PIECE NO. 28868(04)	SHEET NO. 28