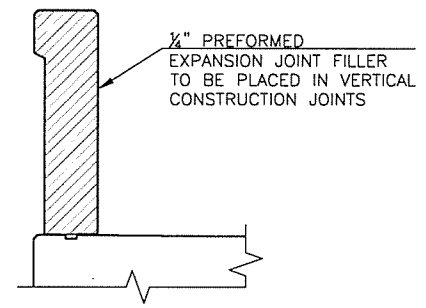


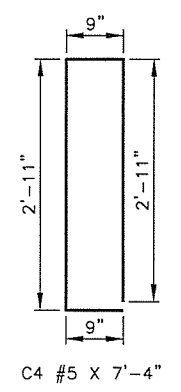
CONCRETE PARAPET 2-A ELEVATION

DRAINS SHOWN ARE ON CONCRETE PARAPET 2-A ONLY. NO OPENINGS ON CONCRETE PARAPETS 1-A AND 3-A.

NOTE:
C1, C2, C3, C5, AND L BARS CAST INTO SIDEWALK INCLUDED IN SUPERSTRUCTURE BAR LIST, SEE SHEET 21.



CONCRETE PARAPET CONSTRUCTION JOINT
(CONCRETE PARAPET 1-A SHOWN, ALL OTHER CONCRETE PARAPETS SIMILAR.)



CONCRETE PARAPET 1-A				
EPOXY COATED REINFORCING				
MARK	SIZE	NO.	FORM	LENGTH
PH1	#7	20	STR.	54'-8"
PH2	#7	10	STR.	37'-10"

CONCRETE PARAPET 2-A				
EPOXY COATED REINFORCING				
MARK	SIZE	NO.	FORM	LENGTH
C4	#5	110	BNT.	7'-4"
PH1	#7	20	STR.	54'-8"
PH2	#7	10	STR.	37'-10"

CONCRETE PARAPET 3-A				
EPOXY COATED REINFORCING				
MARK	SIZE	NO.	FORM	LENGTH
PH3	#5	20	STR.	54'-8"
PH4	#5	10	STR.	37'-10"

CONCRETE PARAPET NOTES

CONSTRUCT THE CONCRETE PARAPET TO MEET THE REQUIREMENTS OF THE STANDARD SPECIFICATIONS FOR HIGHWAY CONSTRUCTION (ENGLISH), AS WELL AS THE FOLLOWING REQUIREMENTS.

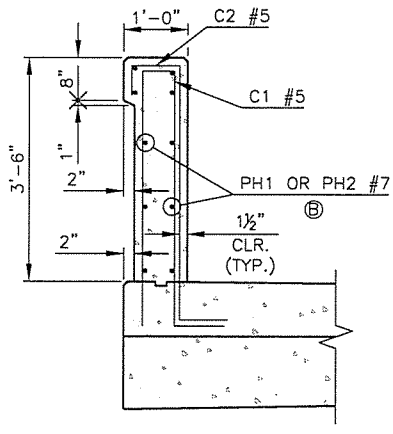
CLASS AA CONCRETE:
CLASS AA CONCRETE SHALL BE USED IN THE CONCRETE PARAPET. ALL COSTS OF THE CONCRETE SHALL BE INCLUDED IN THE PRICE BID PER LINEAR FOOT OF "CONCRETE PARAPET".

REINFORCING STEEL:
ALL REINFORCING STEEL USED IN THE CONCRETE PARAPET SHALL BE EPOXY COATED. PLACE AND TIE ALL C1, C2, C3, C5, AND L1 BARS IN THE DECK SIDEWALKS AND C1, C2, C3, C5, C7, C8, C9, C11, C13, C14, AND L1 BARS IN THE APPROACH SIDEWALKS BEFORE CONCRETE IS PLACED FOR THE SIDEWALKS. THE WEIGHT OF THE C1, C2, C3, C5, AND L1 BARS IN THE DECK SIDEWALKS AND C1, C2, C3, C5, C7, C8, C9, C11, C13, C14, AND L1 BARS IN THE APPROACH SIDEWALKS WILL BE MEASURED AND PAID FOR AS "EPOXY COATED REINFORCING STEEL". ALL OTHER REINFORCING STEEL IN THE PARAPET SHALL BE INCLUDED IN THE UNIT PRICE BID PER LINEAR FOOT OF "CONCRETE PARAPET".

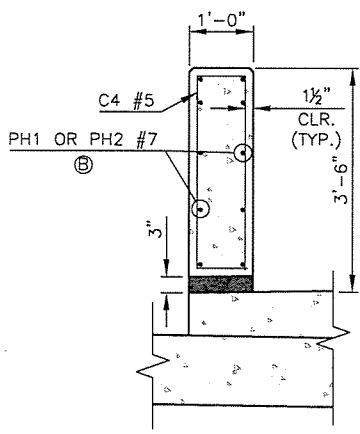
CONSTRUCTION JOINTS:
PLACE A CONSTRUCTION JOINT AT LOCATIONS SHOWN IN THE PLANS. PLACE 1/4" THICK PREFORMED EXPANSION MATERIAL IN THE CONSTRUCTION JOINT IN ACCORDANCE WITH THE DETAILS SHOWN. DO NOT PLACE PH BARS THROUGH A CONSTRUCTION JOINT.

EXPANSION JOINTS:
AT EXPANSION JOINTS IN THE DECK SLAB OR APPROACH SLAB, MATCH THE WIDTH OF THE OPENING BETWEEN THE ENDS OF THE PARAPET WITH THE OPENING OF THE EXPANSION JOINT.

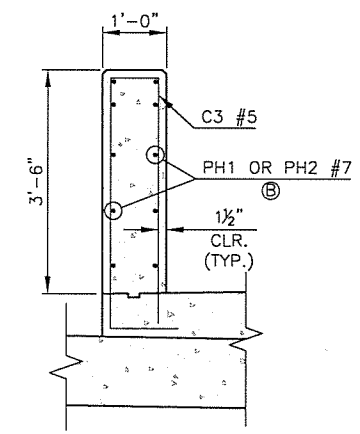
CONTROL CRACK JOINTS:
PROVIDE DOUBLE 3/4" CHAMFERS OR 3/4" DEEP SAWCUT IN ACCORDANCE WITH THE DETAILS SHOWN. ALL BARS SHALL BE CONTINUOUS THROUGH CONTROL CRACK JOINTS. PLACE CONTROL CRACK JOINTS AT LOCATIONS SHOWN IN THE PLANS OR AS DIRECTED BY THE ENGINEER.



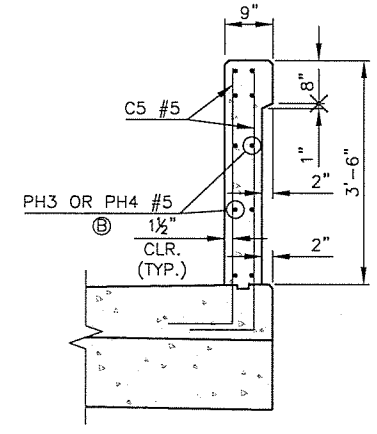
CONCRETE PARAPET 1-A DETAIL



CONCRETE PARAPET 2-A DETAILS



SECTION B



CONCRETE PARAPET 3-A DETAIL

CONCRETE PARAPET QUANTITIES				
ITEM	UNIT	1-A	2-A	3-A
CLASS AA CONCRETE	C.Y.	16.6	19.1	11.8
EPOXY COATED REINFORCING STEEL	LB.	3,010	3,850	1,530

① INCLUDE ALL COST OF CLASS AA CONCRETE AND EPOXY COATED REINFORCING STEEL ACCOUNTED FOR IN THE CONCRETE PARAPET QUANTITIES TABLE, LABOR, EQUIPMENT AND INCIDENTALS NECESSARY TO COMPLETE THE CONSTRUCTION OF PARAPETS 1-A, 2-A, AND 3-A IN THE CONTRACT UNIT PRICE OF "CONCRETE PARAPET".

Ⓐ FOR CONTROL CRACK JOINT AND CONSTRUCTION JOINT LOCATIONS, SEE CONCRETE PARAPET 2-A ELEVATION ON THIS SHEET.
Ⓑ 1'-0" MAXIMUM VERTICAL C/C SPACING BETWEEN PH BARS.

NOTE:
SIDEWALK AND DECK REINFORCING OMITTED FOR CLARITY.