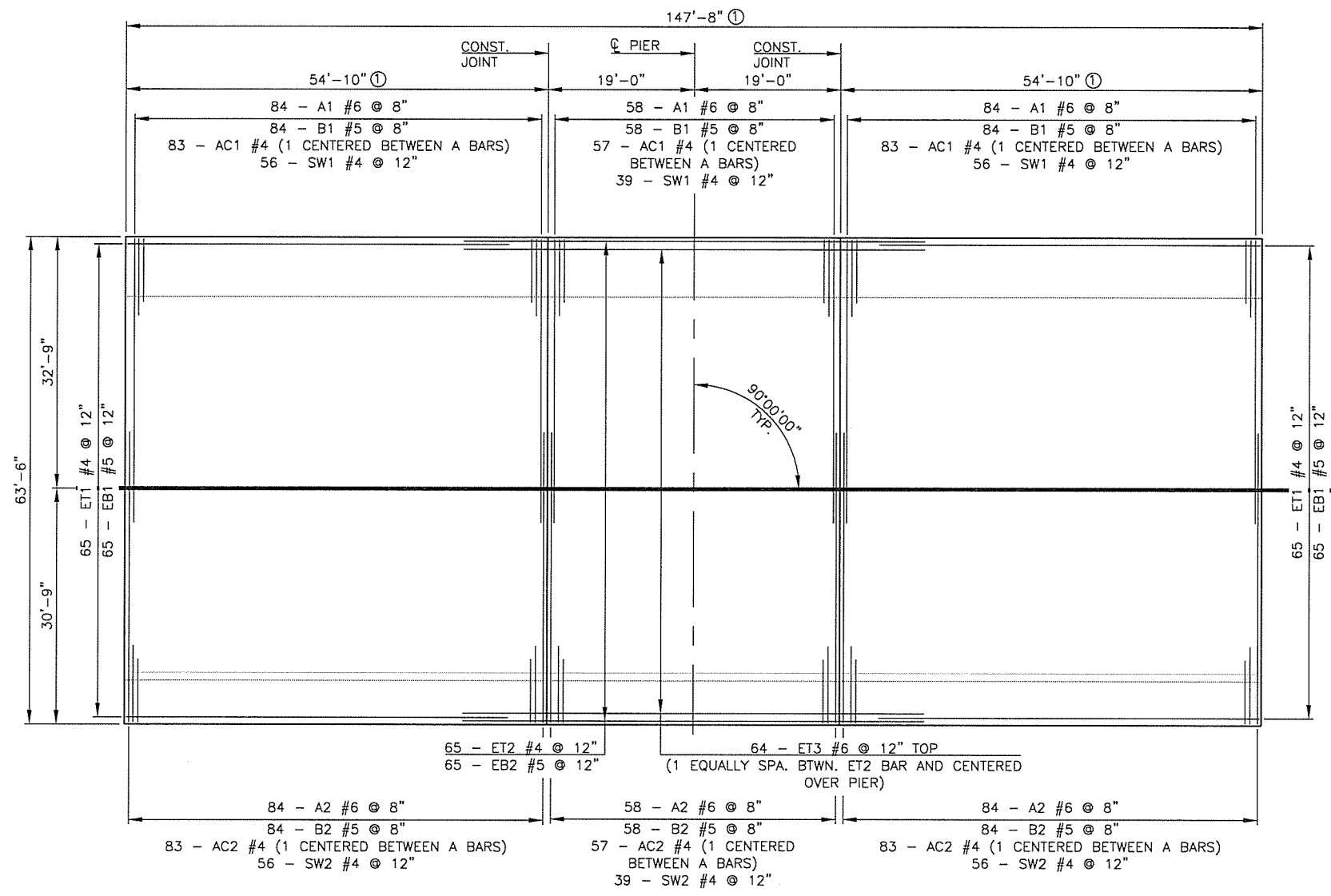
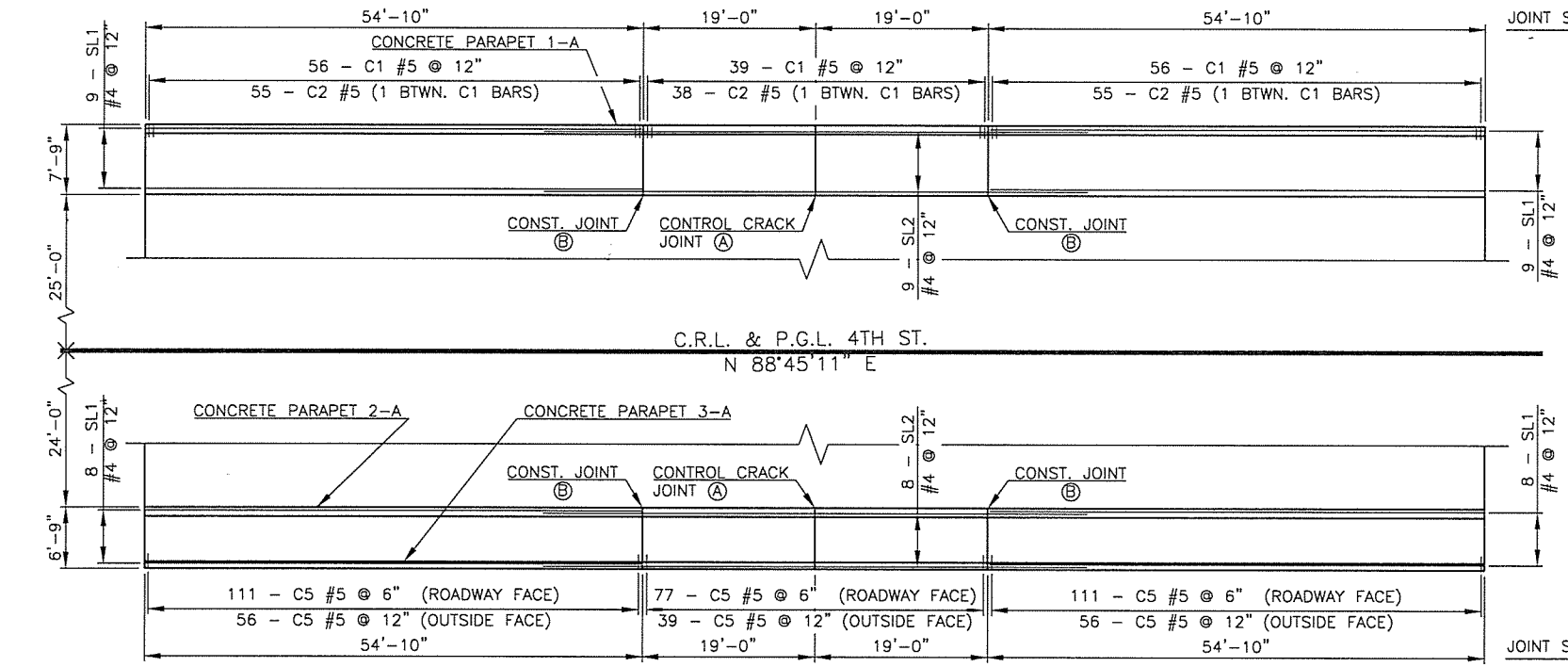


DESCRIPTION	REVISIONS	DATE

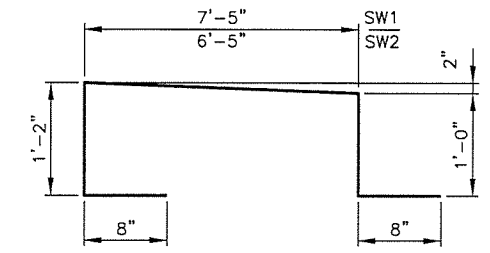


SLAB REINFORCING PLAN

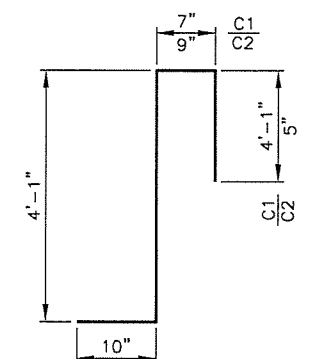


SIDEWALK REINFORCING PLAN

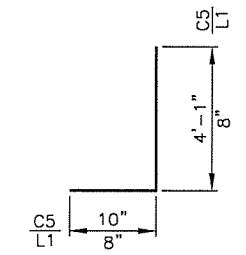
① DIMENSION BASED ON 2" NOMINAL EXPANSION JOINT. ACTUAL DIMENSION BASED ON EXPANSION JOINT SETTINGS, SEE SHEET 24.



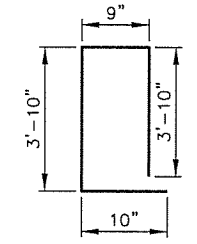
SW1 #4 X 10'-11"
SW2 #4 X 9'-11"



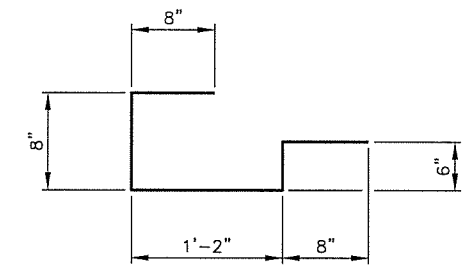
C1 #5 X 9'-7"
C2 #5 X 6'-1"



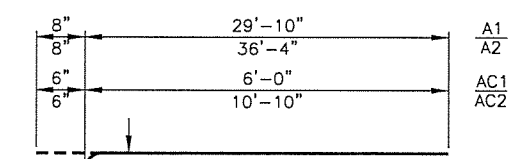
C5 #5 X 4'-11"
L1 #4 X 1'-4"



C3 #5 X 9'-3"



EPH1 #4 X 3'-8"



A1 #6 X 30'-6"
A2 #6 X 37'-0"
AC1 #4 X 6'-6"
AC2 #4 X 11'-4"

EPOXY COATED REINFORCING				
MARK	SIZE	NO.	FORM	LENGTH
A1	#6	226	BNT.	30'-6"
A2	#6	226	BNT.	37'-0"
AC1	#4	223	BNT.	6'-6"
AC2	#4	223	BNT.	11'-4"
AT1	#4	6	STR.	1'-2"
AT2	#4	6	STR.	3'-11"
AT3	#4	36	STR.	7'-2"
AT4	#4	6	STR.	4'-5"
B1	#5	228	STR.	34'-2"
B2	#5	228	STR.	32'-4"
C1	#5	151	BNT.	9'-7"
C2	#5	148	BNT.	6'-1"
C3	#5	209	BNT.	9'-3"
C5	#5	450	BNT.	4'-11"
EB1	#5	130	STR.	46'-4"
EB2	#5	65	STR.	60'-0"
EPH1	#4	124	BNT.	3'-8"
ET1	#4	130	STR.	45'-10"
ET2	#4	65	STR.	60'-0"
ET3	#6	64	STR.	60'-0"
L1	#4	40	BNT.	1'-4"
SL1	#4	34	STR.	45'-10"
SL2	#4	17	STR.	60'-0"
SW1	#4	151	BNT.	10'-11"
SW2	#4	151	BNT.	9'-11"

NOTE:
FOR ADDITIONAL SLAB REINFORCING DETAILS, SEE SHEET 22.

NOTE:
FOR ADDITIONAL DETAIL OF CONCRETE PARAPET, SEE SHEET 23.

Ⓐ PROVIDE 3/4" DEEP SAWCUT. ALL BARS SHALL BE CONTINUOUS THROUGH CONTROL CRACK JOINTS.

Ⓑ SEAL WITH HIGH MOLECULAR WEIGHT METHACRYLATE.

FOR C3 AND L1 BARS CAST INTO SIDEWALK, SEE CONCRETE PARAPET 2-A ELEVATION ON SEE SHEET 23.

DESIGN	B.J.K.	4TH OVER 1-444	TULSA COUNTY
DRAWN	Z.M.B.		
CHECKED	B.J.K., J.W.H.		
APPROV.	T.A.C.		
SQUAD	CEC	JOB PIECE NO. 28868(04)	SHEET NO. 21

SLAB REINFORCING PLAN