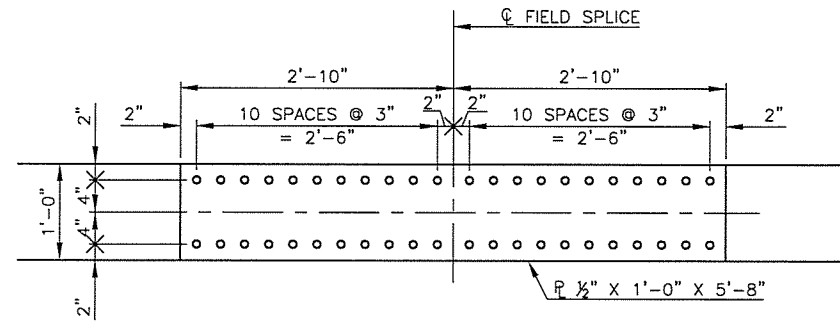
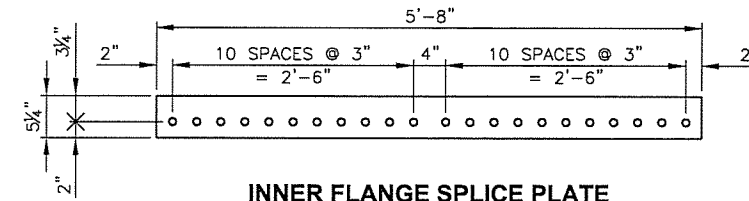


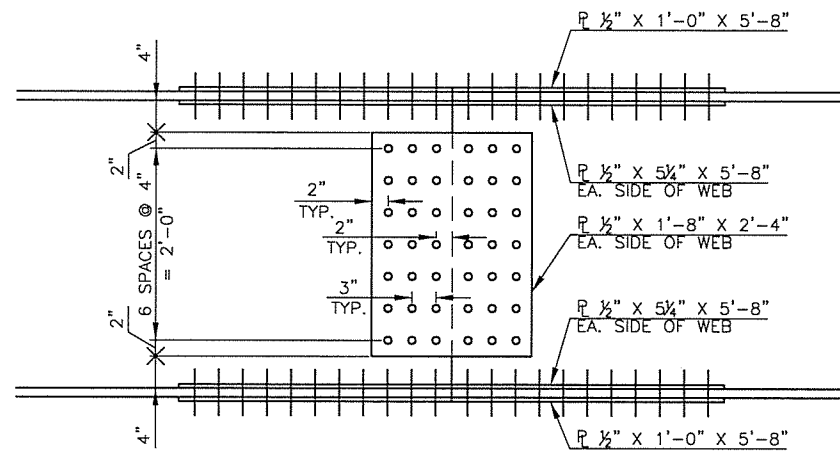
CEC // TRANSPORTATION		
DESCRIPTION	REVISIONS	DATE



**PLAN VIEW**



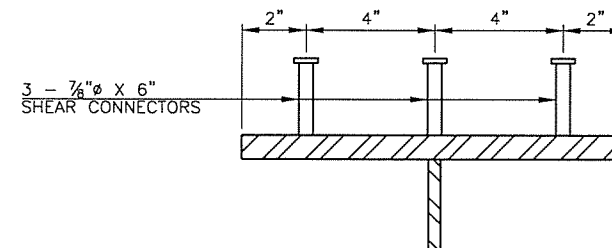
**INNER FLANGE SPLICE PLATE**  
(P 1/2" X 5 1/4" X 5'-8")



**ELEVATION VIEW**

**BOLTED FIELD SPLICE DETAILS**

ALL BOLTS 7/8" Ø A325  
ALL HOLES 1 5/16" Ø

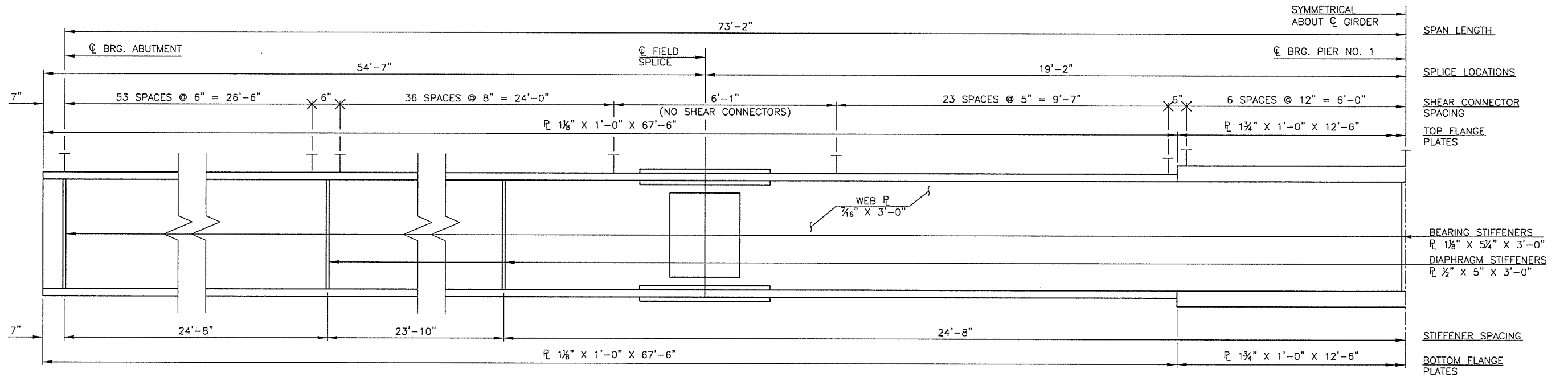


**SHEAR CONNECTOR DETAIL**

**PLATE GIRDER NOTES:**

1. DETAILS ARE DRAWN, AND DIMENSIONS SHOWN, AS IF THE TOP FLANGE OF PLATE GIRDERS WERE IN A TRULY HORIZONTAL POSITION. NO ACCOUNTING HAS BEEN MADE IN THE DRAWING FOR GRADE OR CAMBER. SHOP DRAWINGS WILL INCLUDE SUCH ADJUSTMENTS AS ARE NECESSARY TO PROVIDE FOR VERTICAL CURVATURE AND DEAD LOAD DEFLECTION. SEE BLOCKING DIAGRAM ON SHEET 17.
2. FABRICATE THE GIRDERS AND DIAPHRAGMS SUCH THAT ALL GIRDER WEBS ARE PLUMB VERTICAL WHEN GIRDERS ARE IN THEIR FINAL POSITION (I.E. AFTER THE DECK AND PARAPET HAVE BEEN PLACED).
3. ALL PLATES SHALL CONFORM TO THE CHARPY V-NOTCH REQUIREMENTS.
4. BEARING STIFFENER PLATES: PLACE IN PAIRS, WELD TO TOP AND BOTTOM FLANGES.
5. DIAPHRAGM STIFFENER PLATES: ON EXTERIOR GIRDERS, PLACE ON INSIDE OF WEB. WELD TO TOP AND BOTTOM FLANGES. ON INTERIOR GIRDERS, PLACE IN PAIRS. WELD TO TOP AND BOTTOM FLANGES.
6. WEB TO FLANGE 5/16" FILLET WELD.

NOTE:  
FOR ADDITIONAL DETAIL OF BEARING AND DIAPHRAGM STIFFENERS, SEE SHEET 19.



**PLATE GIRDER ELEVATION**

DESIGN	B.J.K.	4TH OVER I-444	TULSA COUNTY
DRAWN	R.A.P. J.F.R.	<b>PLATE GIRDER DETAILS</b>	
CHECKED	B.J.K. J.W.H.		
APPROV.	T.A.C.		
SQUAD	CEC		
JOB PIECE NO. 28868(04)		SHEET NO. 18	