

PEDESTAL SCHEDULE

PEDESTAL HEIGHT	# OF P3 BARS
2" - 6 5/16"	0
7 3/4"	1

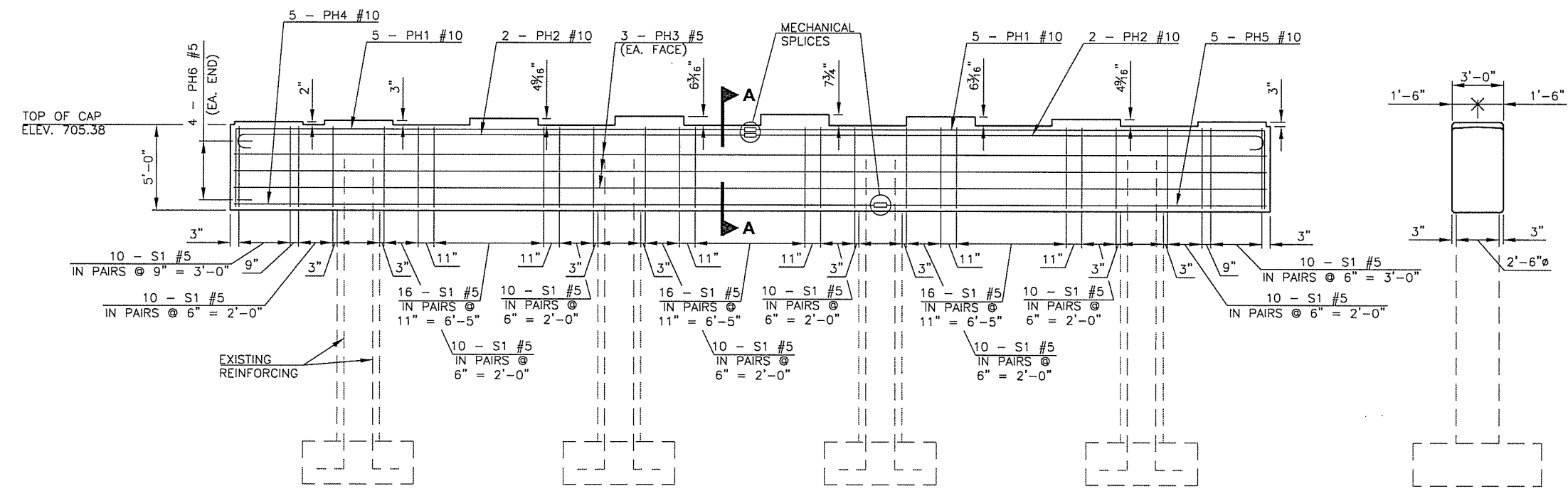
PIER NO. 1 BAR LIST

EPOXY COATED REINFORCING

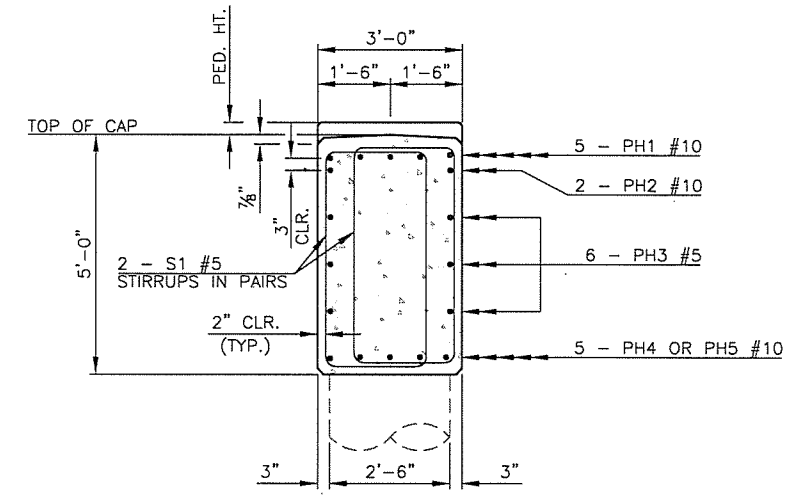
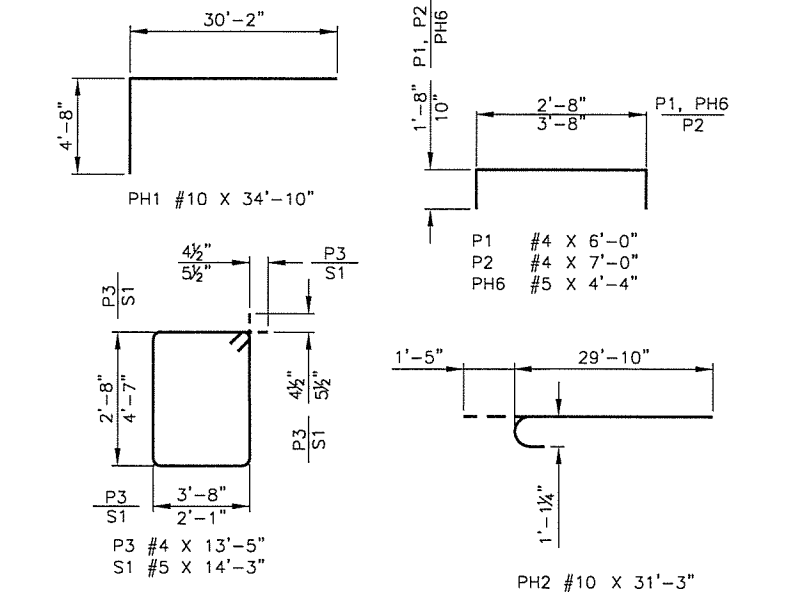
MARK	SIZE	NO.	FORM	LENGTH
P1	#4	40	BNT.	6'-0"
P2	#4	32	BNT.	7'-0"
P3	#4	1	BNT.	13'-5"
PH1	#10	10	BNT.	34'-10"
PH2	#10	4	BNT.	31'-3"
PH3	#5	6	STR.	62'-11"
PH4	#10	5	STR.	37'-10"
PH5	#10	5	STR.	22'-7"
PH6	#5	8	BNT.	4'-4"
S1	#5	148	BNT.	14'-3"

① LENGTH INCLUDES 1 LAP AT 2'-6"

PLAN



ELEVATION



SECTION A-A

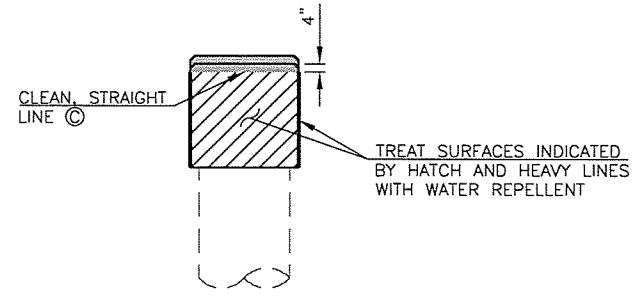
PIER NO. 1 QUANTITIES

ITEM	UNIT	TOTAL
SPECIAL CONCRETE FINISH	S.Y.	33
CLASS A CONCRETE	C.Y.	35.1
MECHANICAL SPLICES	EA.	12
EPOXY COATED REINFORCING STEEL	LB.	6,290
WATER REPELLENT (VISUALLY INSPECTED)	S.Y.	96
PNEUMATICALLY PLACED MORTAR	S.Y.	6
(SP) CARBON FIBER-REINFORCED POLYMER	S.F.	146.6
(SP) CORROSION INHIBITOR (SURFACE APPLIED)	S.Y.	16.3
(PL) INSTALLATION OF BRIDGE ITEMS (TYPE B)	LSUM.	1

SIDE

NOTE:
TREAT EXISTING COLUMNS WITH SPECIAL CONCRETE FINISH.

EXISTING COLUMN REINFORCING MUST EXTEND 3'-0" MINIMUM INTO NEW PIER CAP.



WATER REPELLENT AND CIM 1000 TREATMENT DETAIL

① REMOVAL OF BRIDGE ITEMS INCLUDED IN SUPERSTRUCTURE QUANTITIES, SEE SHEET 16.
 ② QUANTITY INCLUDES 29.8 S.Y. OF CIM 1000 OR APPROVED EQUAL.
 ③ APPLY CIM 1000, OR APPROVED EQUAL, TO TOP AND SIDES OF PEDESTALS, TOP OF PIER CAP, AND TO AN ELEVATION 4" DOWN FROM THE TOP OF PIER CAP. EDGES OF THE COATING SHALL BE MASKED WITH TAPE PRIOR TO APPLICATION TO ENSURE CLEAN, STRAIGHT LINES ARE OBTAINED. REMOVE COATING FROM ANY SURFACE OUTSIDE OF THE AREAS INDICATED IN THE PLANS. DO NOT APPLY WATER REPELLENT ON SURFACES PRIOR TO APPLICATION OF CIM 1000. THE DEPARTMENT WILL NOT PAY FOR WATER REPELLENT ON SURFACES TREATED WITH CIM 1000. INCLUDE ALL COSTS FOR MATERIALS, LABOR, EQUIPMENT, AND INCIDENTALS NECESSARY TO COMPLETE THE WORK IN THE CONTRACT PRICE BID FOR "(PL) INSTALLATION OF BRIDGE ITEMS (TYPE B)".