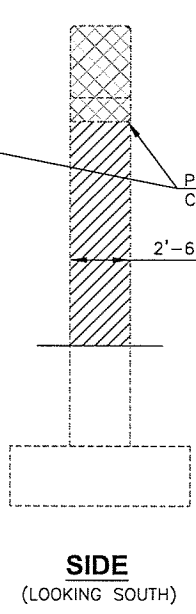
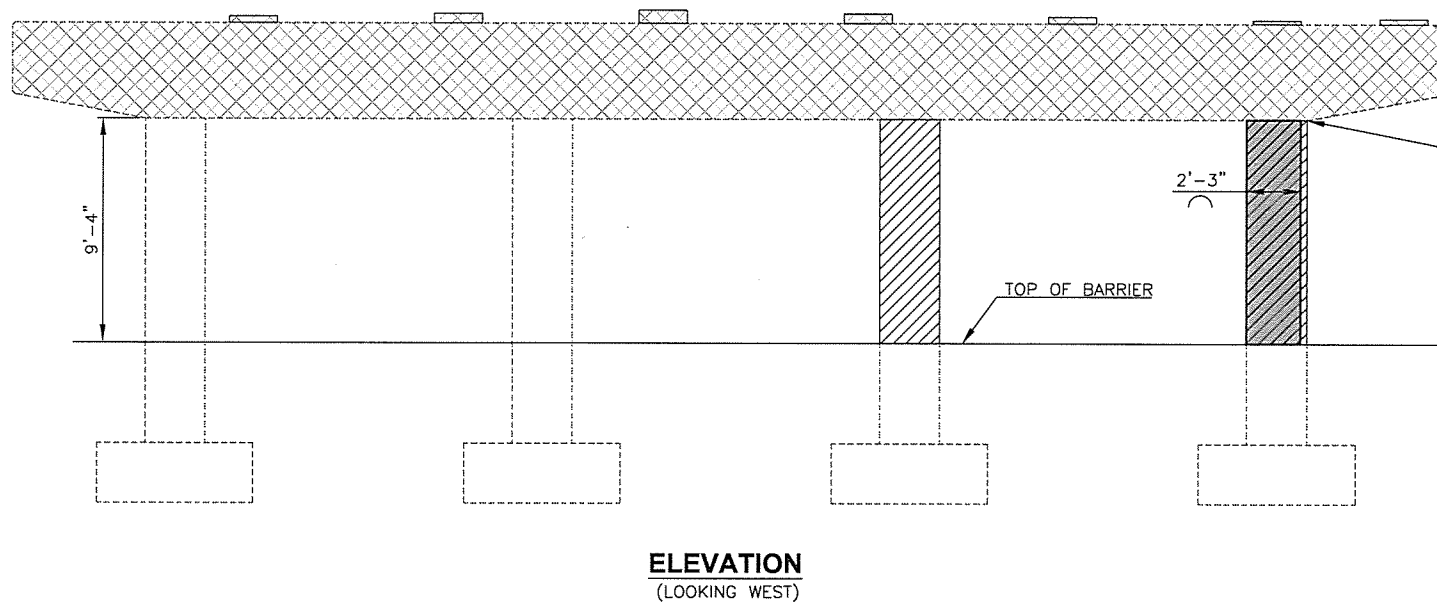
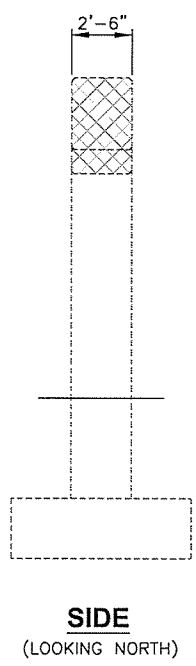
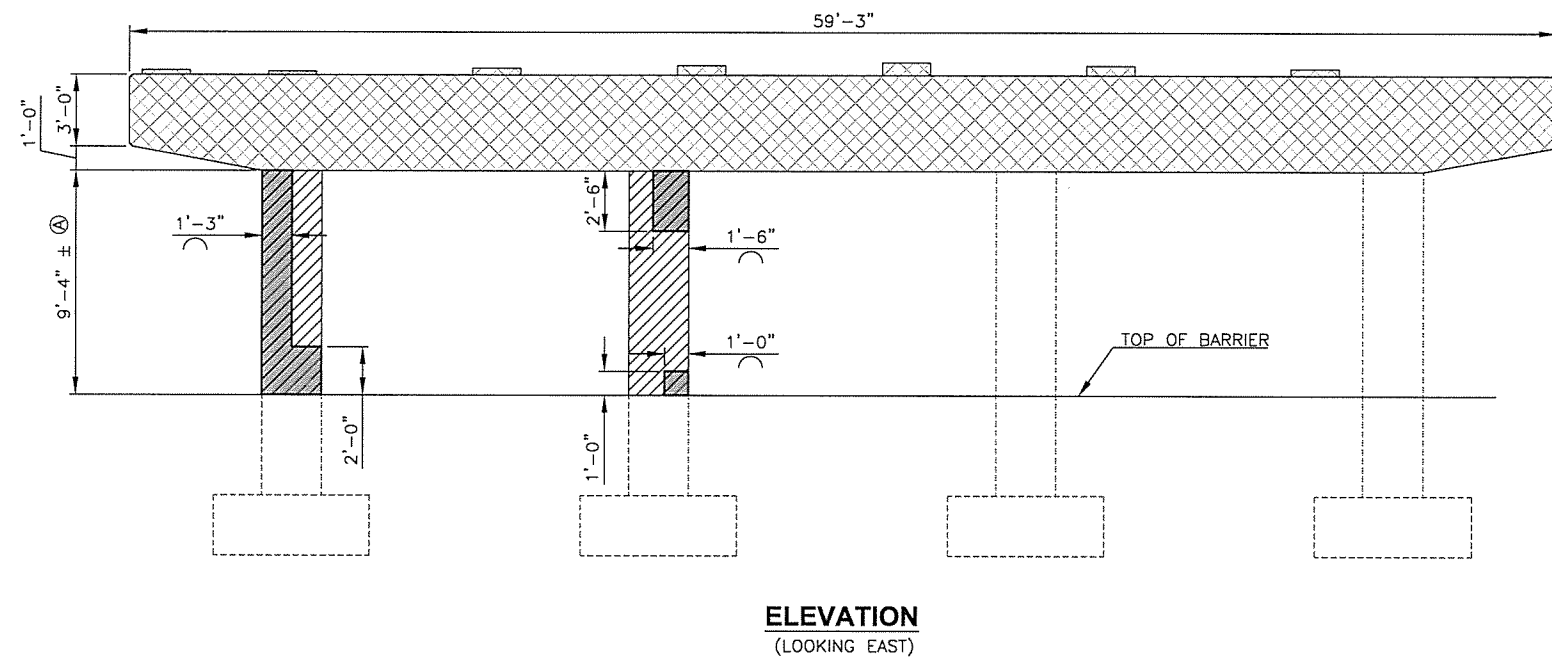
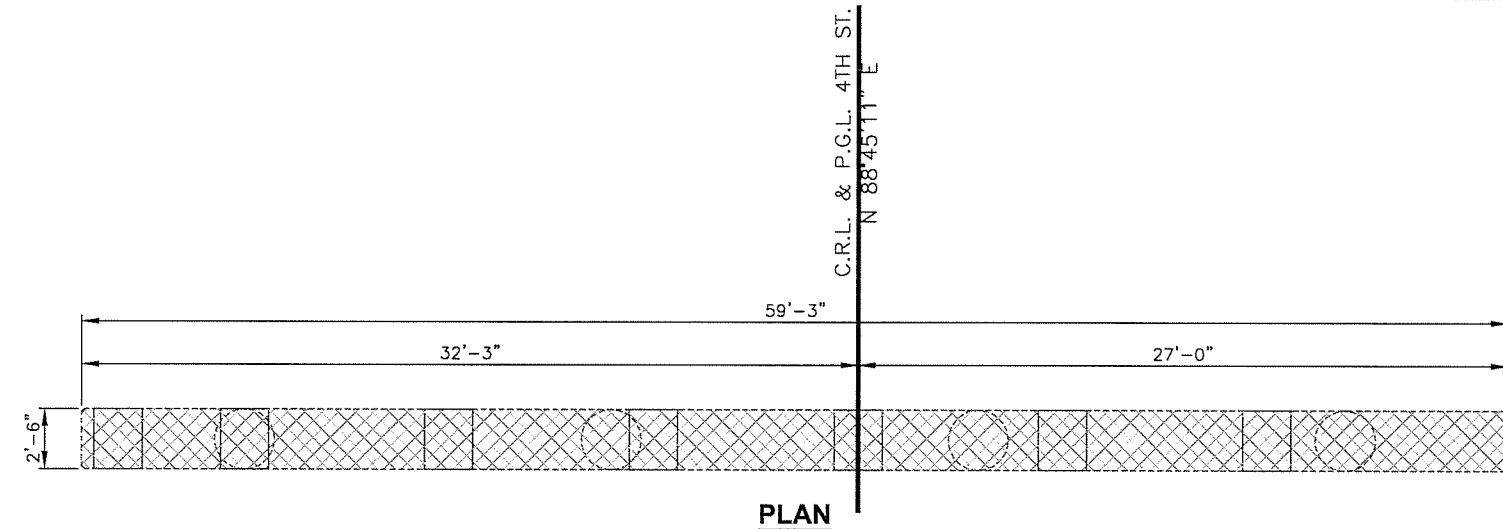
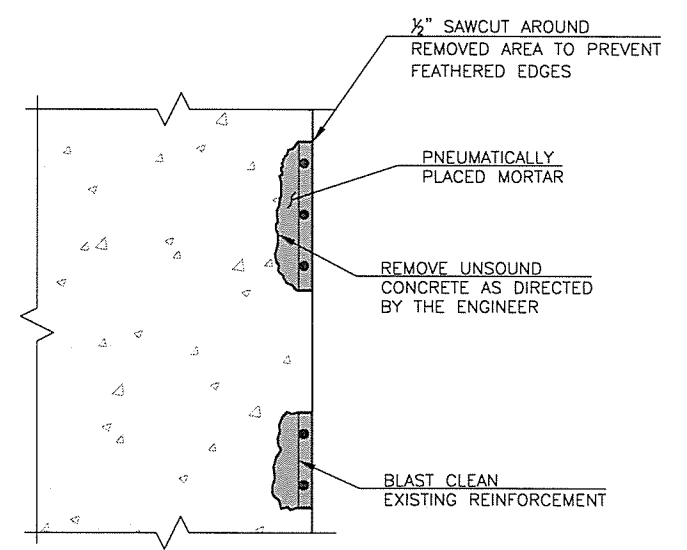


DESCRIPTION	REVISIONS	DATE



**REPAIR LEGEND**

- EXISTING PIER CAP AND COLUMN REMOVAL
- CORROSION INHIBITOR AND CARBON FIBER-REINFORCED POLYMER WRAP
- PNEUMATICALLY PLACED MORTAR



**PNEUMATICALLY PLACED MORTAR DETAIL**

CLASS AA CONCRETE MUST BE USED TO REPLACE REMOVED CONCRETE, IF THE REMOVAL OF UNSOUND CONCRETE IS DEEPER THAN THE PRIMARY REINFORCEMENT.

REMOVE CONCRETE FROM TOP OF COLUMN TO MATCH NEW ELEVATION. COLUMN REINFORCING TO REMAIN IN PLACE AND CUT DOWN TO 2" BELOW TOP OF NEW PIER CAP ELEVATION.

DESIGN	B.J.K.	4TH OVER I-444	TULSA COUNTY
DRAWN	J.F.R.		
CHECKED	M.R.S. J.W.H.		
APPROV.	T.A.C.		
SQUAD	CEC		

**PIER NO. 1 REPAIR DETAILS**