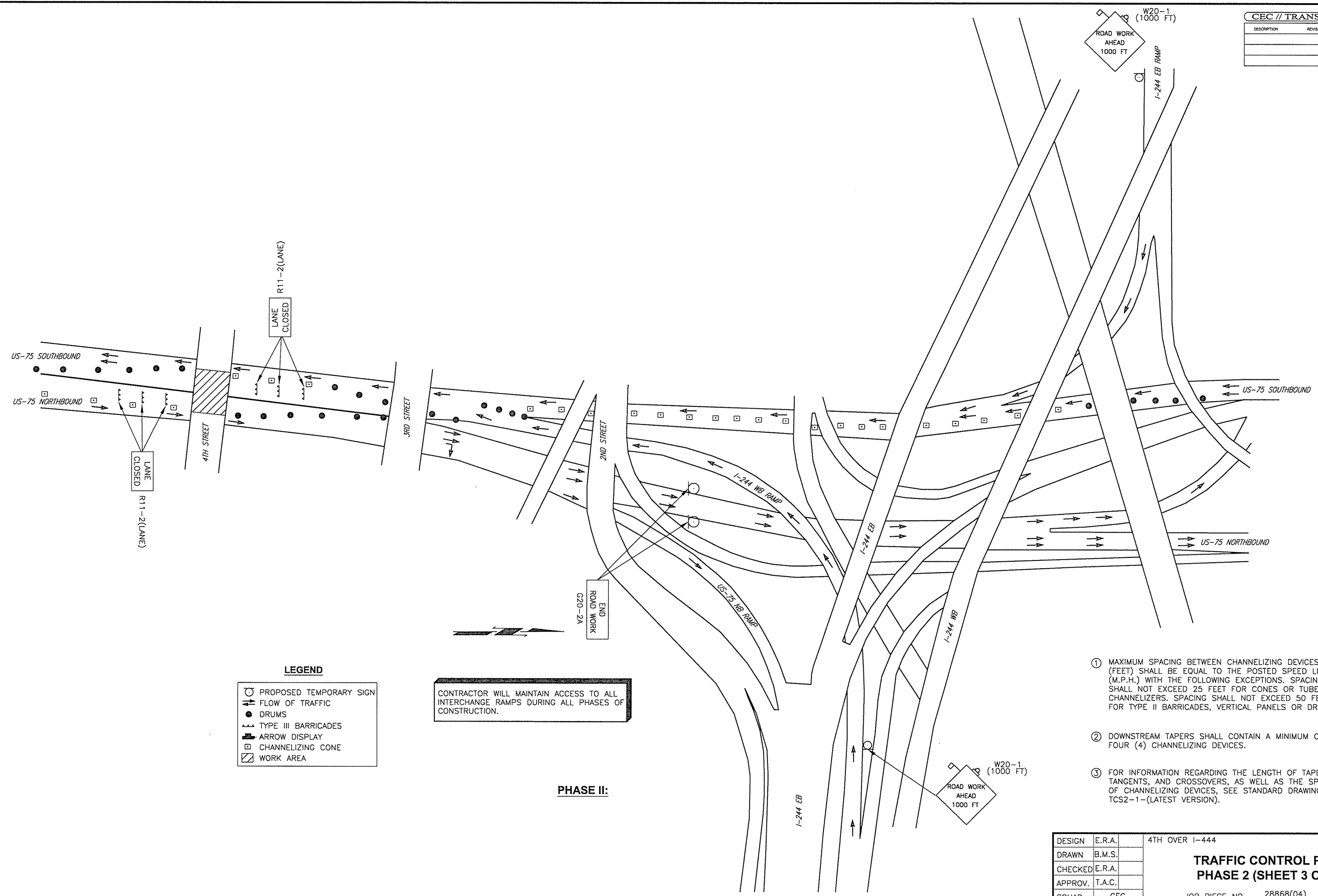


DESCRIPTION	REVISIONS	DATE



LEGEND

- PROPOSED TEMPORARY SIGN
- FLOW OF TRAFFIC
- DRUMS
- ⚡ TYPE III BARRICADES
- ⇄ ARROW DISPLAY
- ▣ CHANNELIZING CONE
- ▨ WORK AREA

CONTRACTOR WILL MAINTAIN ACCESS TO ALL INTERCHANGE RAMPS DURING ALL PHASES OF CONSTRUCTION.

PHASE II:

- ① MAXIMUM SPACING BETWEEN CHANNELIZING DEVICES (FEET) SHALL BE EQUAL TO THE POSTED SPEED LIMIT (M.P.H.) WITH THE FOLLOWING EXCEPTIONS. SPACING SHALL NOT EXCEED 25 FEET FOR CONES OR TUBE CHANNELIZERS. SPACING SHALL NOT EXCEED 50 FEET FOR TYPE II BARRICADES, VERTICAL PANELS OR DRUMS.
- ② DOWNSTREAM TAPERS SHALL CONTAIN A MINIMUM OF FOUR (4) CHANNELIZING DEVICES.
- ③ FOR INFORMATION REGARDING THE LENGTH OF TAPERS, TANGENTS, AND CROSSOVERS, AS WELL AS THE SPACING OF CHANNELIZING DEVICES, SEE STANDARD DRAWING TCS2-1-(LATEST VERSION).

DESIGN	E.R.A.	4TH OVER I-444	TULSA COUNTY
DRAWN	B.M.S.	TRAFFIC CONTROL PLAN PHASE 2 (SHEET 3 OF 3)	
CHECKED	E.R.A.		
APPROV.	T.A.C.		
SQUAD	CEC	JOB PIECE NO. 28868(04)	SHEET NO. 7H