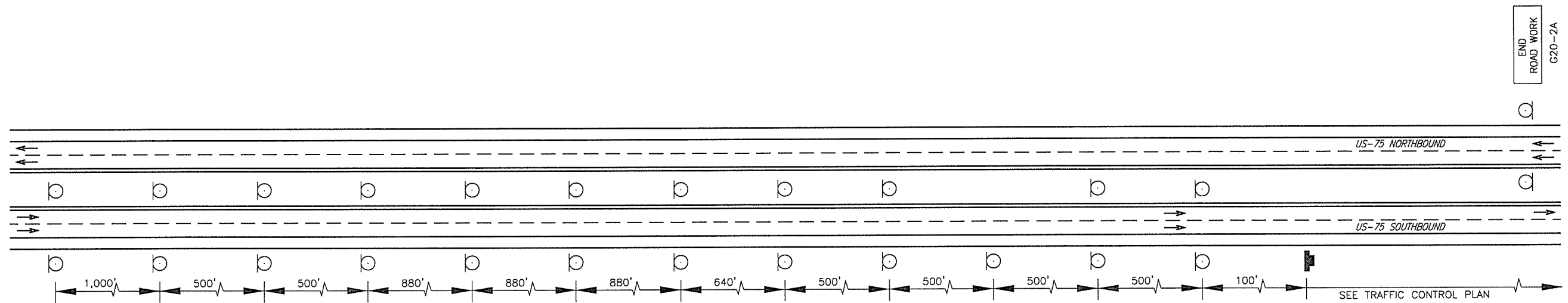


DESCRIPTION	REVISIONS	DATE



G20-1A
ROAD WORK NEXT 1 MILE
WING BARRICADE

WORK-ZONE FINES DOUBLE WHEN WORKERS ARE PRESENT
CS-16E CS-17E CS-18E

STAY ALERT PLEASE IN WORK ZONE

W20-1 (1 MILE)

W3-5(45)

W20-5(R) (1/2 MILE)

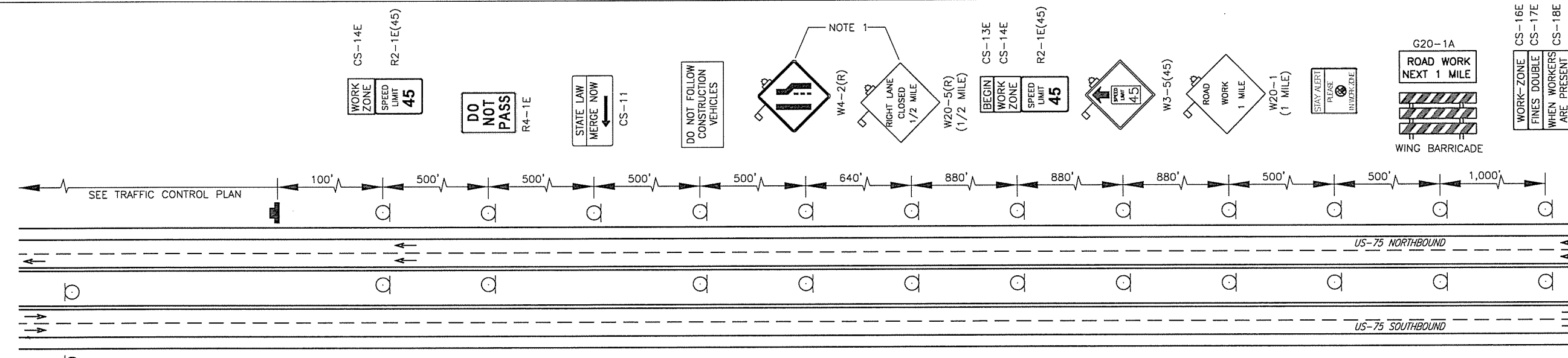
W4-2(R)

DO NOT FOLLOW CONSTRUCTION VEHICLES

STATE LAW MERGE NOW CS-11

DO NOT PASS R4-1E

WORK ZONE SPEED LIMIT 45 CS-14E R2-1E(45)



CS-14E R2-1E(45)

DO NOT PASS R4-1E

STATE LAW MERGE NOW CS-11

DO NOT FOLLOW CONSTRUCTION VEHICLES

NOTE 1

W4-2(R)

RIGHT LANE CLOSED 1/2 MILE

W20-5(R) (1/2 MILE)

BEGIN WORK ZONE SPEED LIMIT 45 CS-13E CS-14E R2-1E(45)

W3-5(45)

ROAD WORK 1 MILE

W20-1 (1 MILE)

STAY ALERT PLEASE IN WORK ZONE

G20-1A ROAD WORK NEXT 1 MILE WING BARRICADE

WORK-ZONE FINES DOUBLE WHEN WORKERS ARE PRESENT CS-16E CS-17E CS-18E

END ROAD WORK G20-2A

NOTE 1
SIGNS ARE INTERCHANGEABLE (LEFT AND RIGHT) BASED ON CONSTRUCTION PHASE.



- COLOR:
LEGEND, SYMBOL AND BORDER:
BLACK (NON-REFLECTORIZED)
RED (TRANSPARENT REFLECTORIZED)
BACKGROUND:
▲ FLUORESCENT ORANGE (REFLECTORIZED)
* FLUORESCENT YELLOW (REFLECTORIZED)
● WHITE (REFLECTORIZED)

LEGEND

	PROPOSED TEMPORARY SIGN
	FLOW OF TRAFFIC
	DRUMS
	TYPE III BARRICADES
	ARROW DISPLAY

DESIGN	E.R.A.	4TH OVER I-444	TULSA COUNTY
DRAWN	B.M.S.		
CHECKED	E.R.A.		
APPROV.	T.A.C.		
SQUAD	CEC		

**TRAFFIC CONTROL
ADVANCED WARNING**

JOB PIECE NO. 28868(04) SHEET NO. 7B