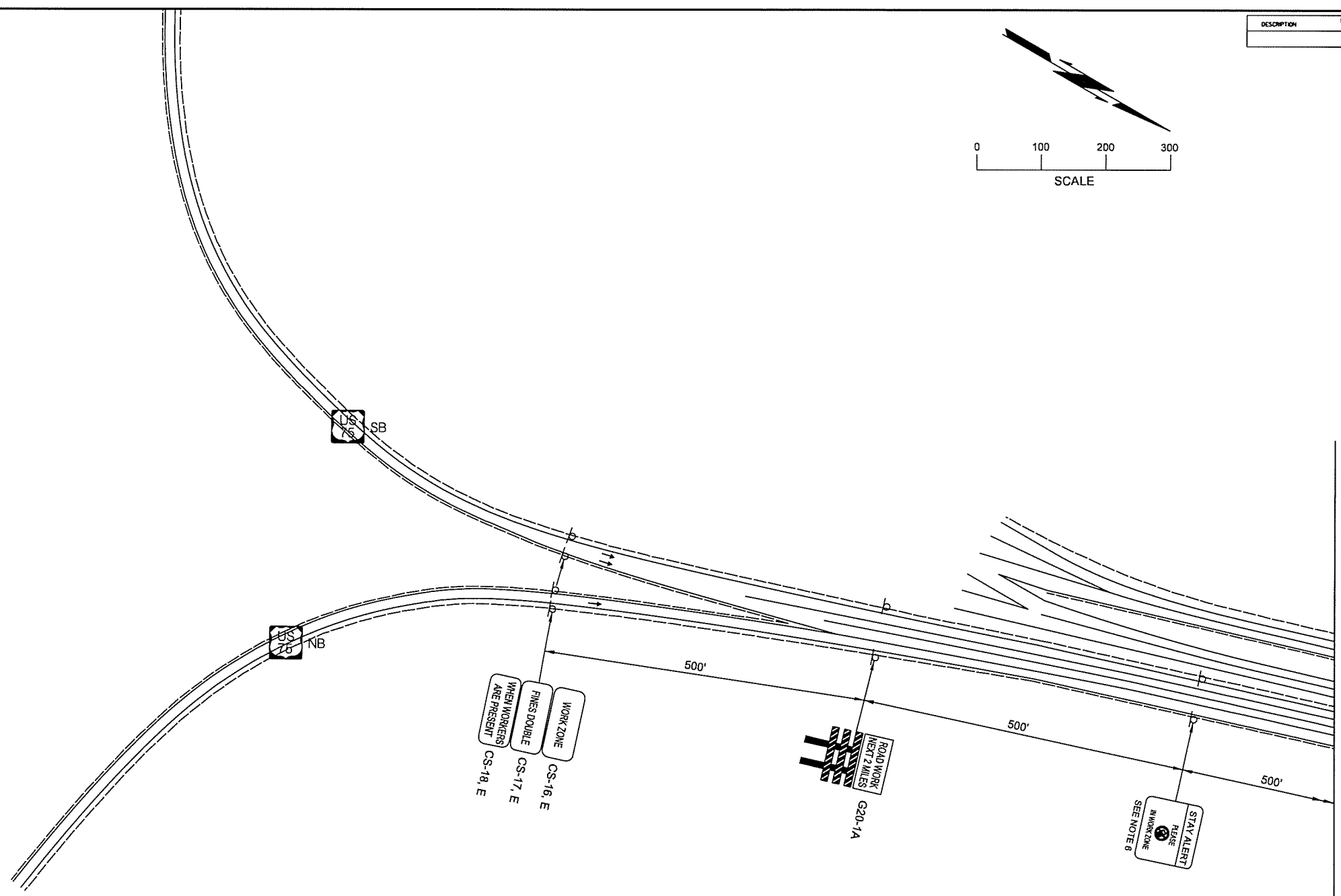
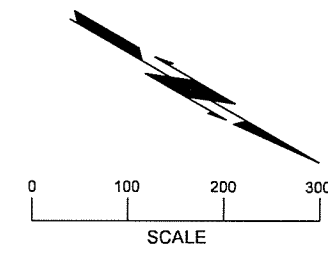


DESCRIPTION	REVISIONS	DATE



MATCHLINE - NB US-75 OUTSIDE SHOULDER CLOSURE - SHEET 2 OF 3

REMOVE ANY CONFLICTING PAVEMENT MARKING

NOTE 1:
MAXIMUM SPACING BETWEEN CHANNELIZING DEVICES (FEET) SHALL BE EQUAL TO THE POSTED SPEED LIMIT (M.P.H.) WITH THE FOLLOWING EXCEPTIONS. SPACING SHALL NOT EXCEED 25 FEET FOR CONES OR TUBE CHANNELIZERS. SPACING SHALL NOT EXCEED 50 FEET FOR TYPE II BARRICADES, VERTICAL PANELS OR DRUMS.

NOTE 2:
MAXIMUM SPACING BETWEEN CHANNELIZING DEVICES (FEET) SHALL BE EQUAL TO TWICE THE POSTED SPEED LIMIT (M.P.H.) WITH THE FOLLOWING EXCEPTIONS. SPACING SHALL NOT EXCEED 50 FEET FOR CONES OR TUBE CHANNELIZERS. SPACING SHALL NOT EXCEED 100 FEET FOR TYPE II BARRICADES, VERTICAL PANELS OR DRUMS.

NOTE 3:
A MINIMUM OF FIVE (5) CHANNELIZING DEVICES SHALL BE PLACED THROUGH THIS TAPER.

NOTE 4:
CONSTRUCTION SPEED LIMIT TO BE DETERMINED BY THE DIVISION ENGINEER.

NOTE 5:
DOWNSTREAM TAPERS SHALL CONTAIN A MINIMUM OF FOUR (4) CHANNELIZING DEVICES.

NOTE 6:
SEE "SUMMARY OF PAY QUANTITIES (TRAFFIC)" FOR DETAIL

FOR ADDITIONAL INFORMATION ABOUT TAPER LENGTHS AND SPACING OF CHANNELIZING DEVICES, SEE STANDARD DRAWING TCS2-1-(LATEST REVISIONS).

- LEGEND:**
- SIGN
 - CHANNELIZING DEVICE (DRUM)
 - ARROW DISPLAY
 - ATTENUATOR
 - TYPE III BARRICADE
 - PORT. LONGITUDINAL BARRIER
 - BARRIER

DESIGN		OKLAHOMA DEPARTMENT OF TRANSPORTATION TRAFFIC CONTROL PLAN NB US-75 OUTSIDE SHOULDER CLOSURE SHEET 1 OF 3 STATE JOB NO. 28865(04) SHEET NO. 87 TULSA CO. 2ND STREET
DRAWN		
CHECKED		
APPROVED		
CREW		

6/7/2016 N:\11399\200-11399-13001-05\CAD\SheetFiles\JP_28865 (04) -87-RD-Traffic Control_PH4_1.dgn